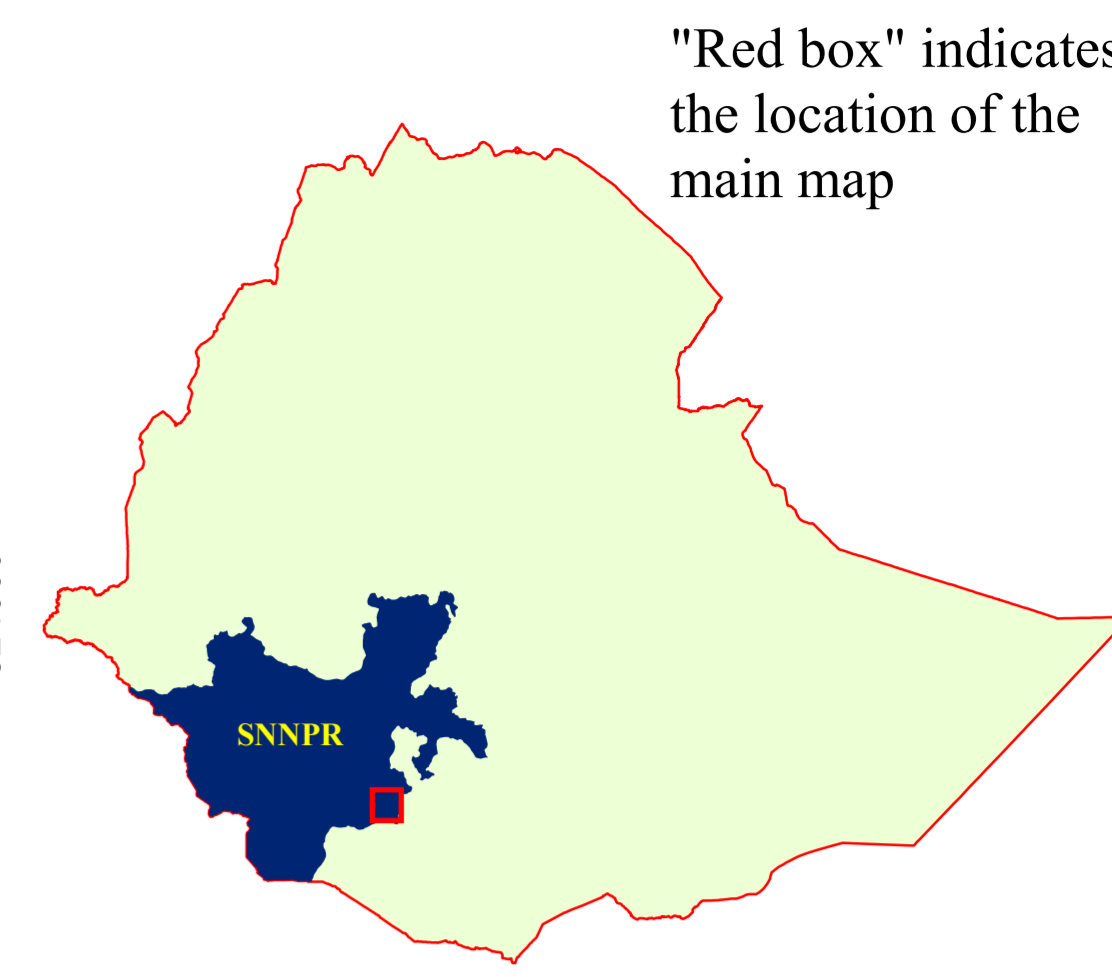
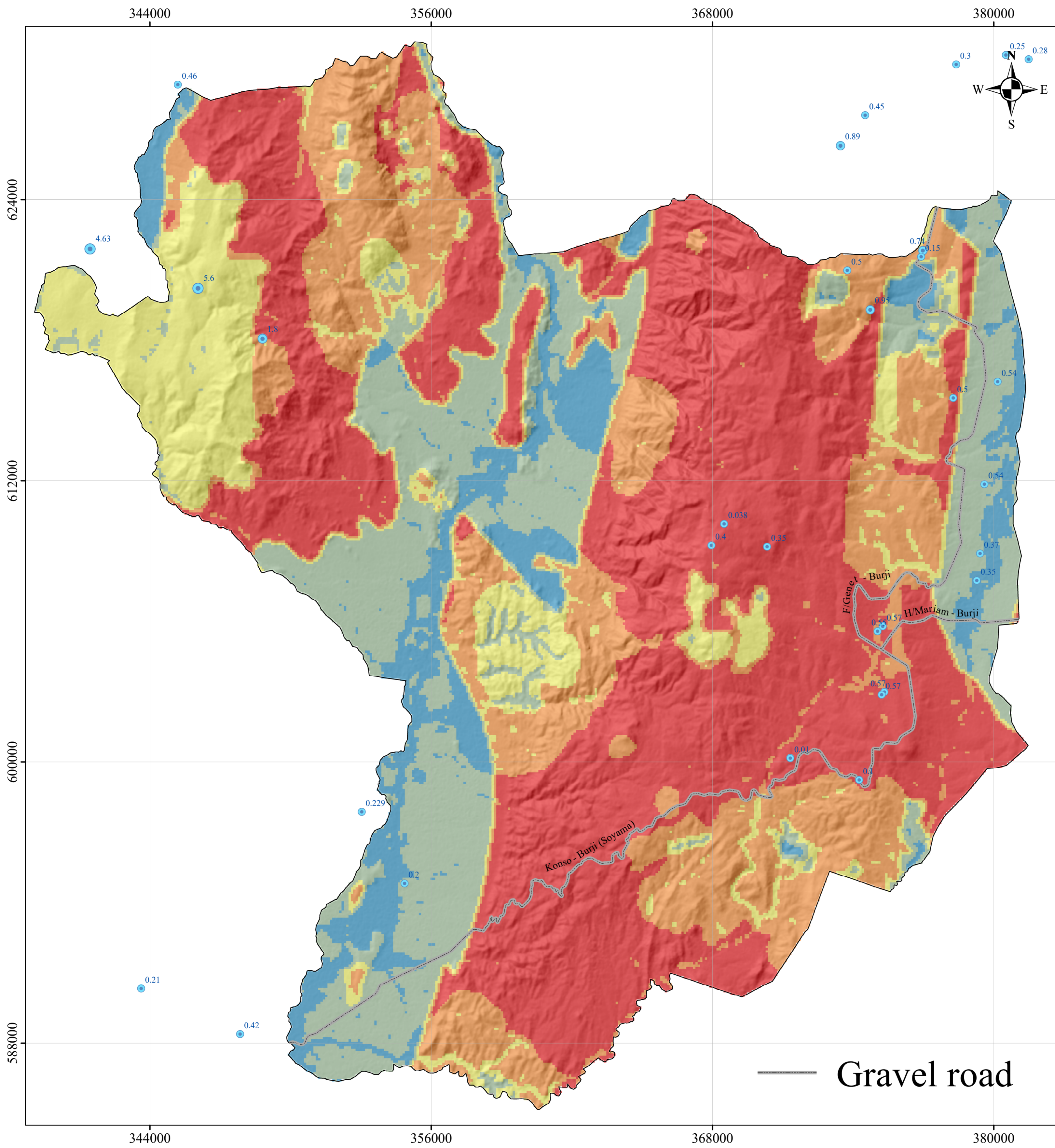


Map of Groundwater Potential Zones for Burji Woreda



Groundwater Potential Zones

- Very low (unsuitable)
- Low
- Moderate
- High
- Very high

Borehole yield (l/s)

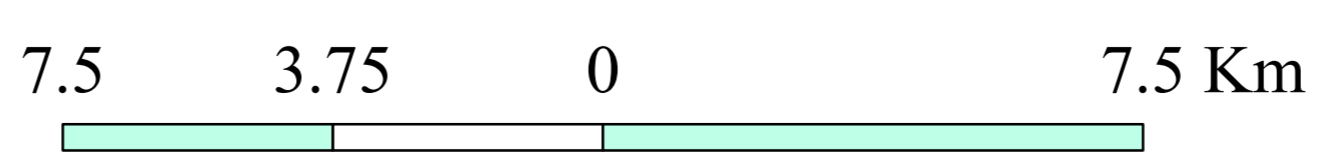
- 0.00 - 0.58
- 0.59 - 1.38
- 1.39 - 2.85
- 2.86 - 6.00

Coordinate system: UTM Zone 37N
 Projection: Transverse Mercator
 Datum: WGS 1984
 Unit: Meter

GroundWater mapping
 Hydrogeological Mapping Using Remote Sensing, GIS and Geophysical Surveying

December, 2021

1:100,000



Ministry of Water and Energy