

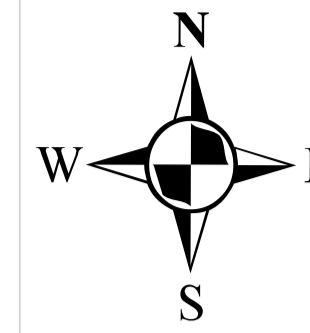
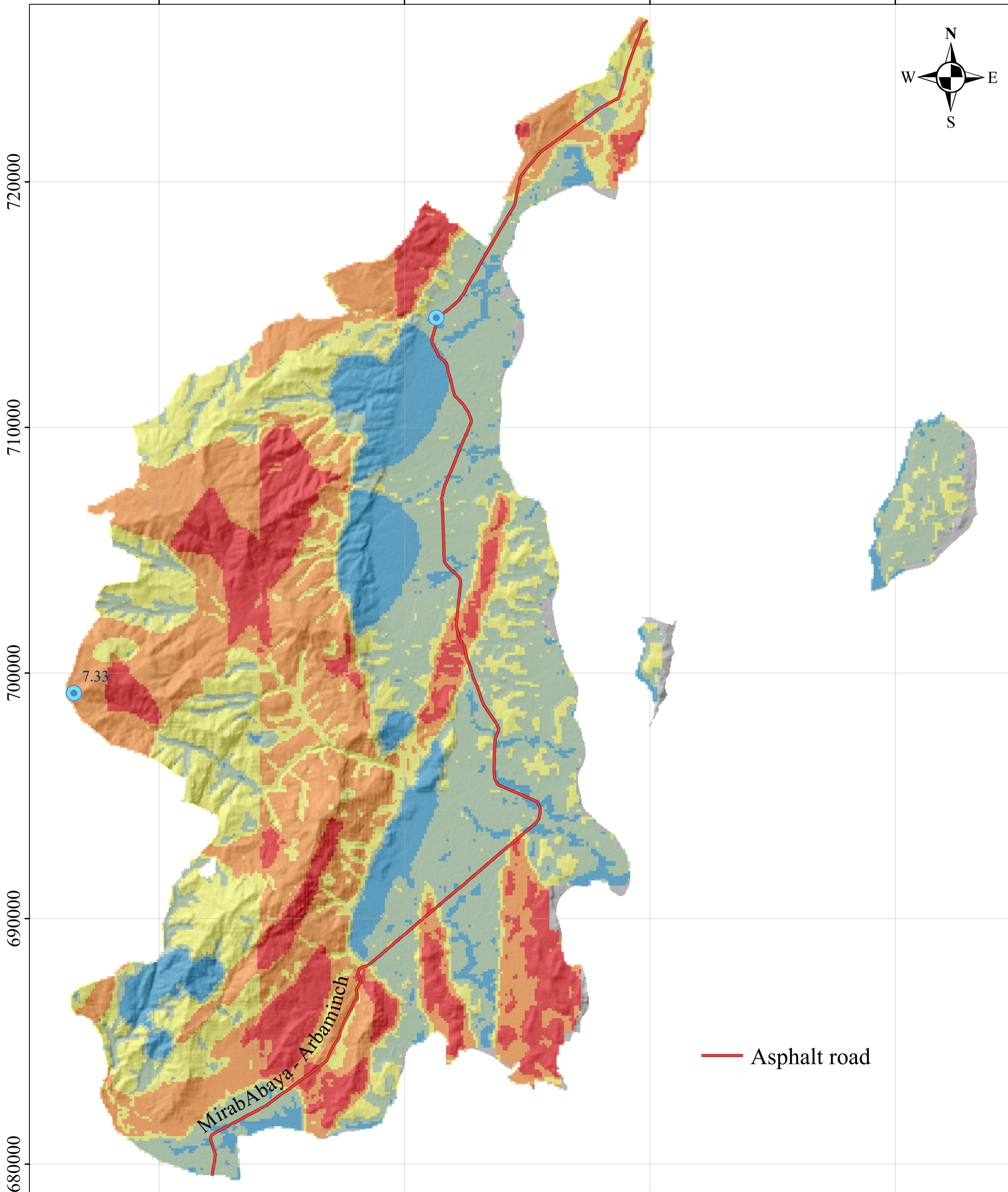
Map of Groundwater Potential Zones for Mirab Abaya Woreda

350000

360000

370000

380000



"Red box" indicates the location of the main map

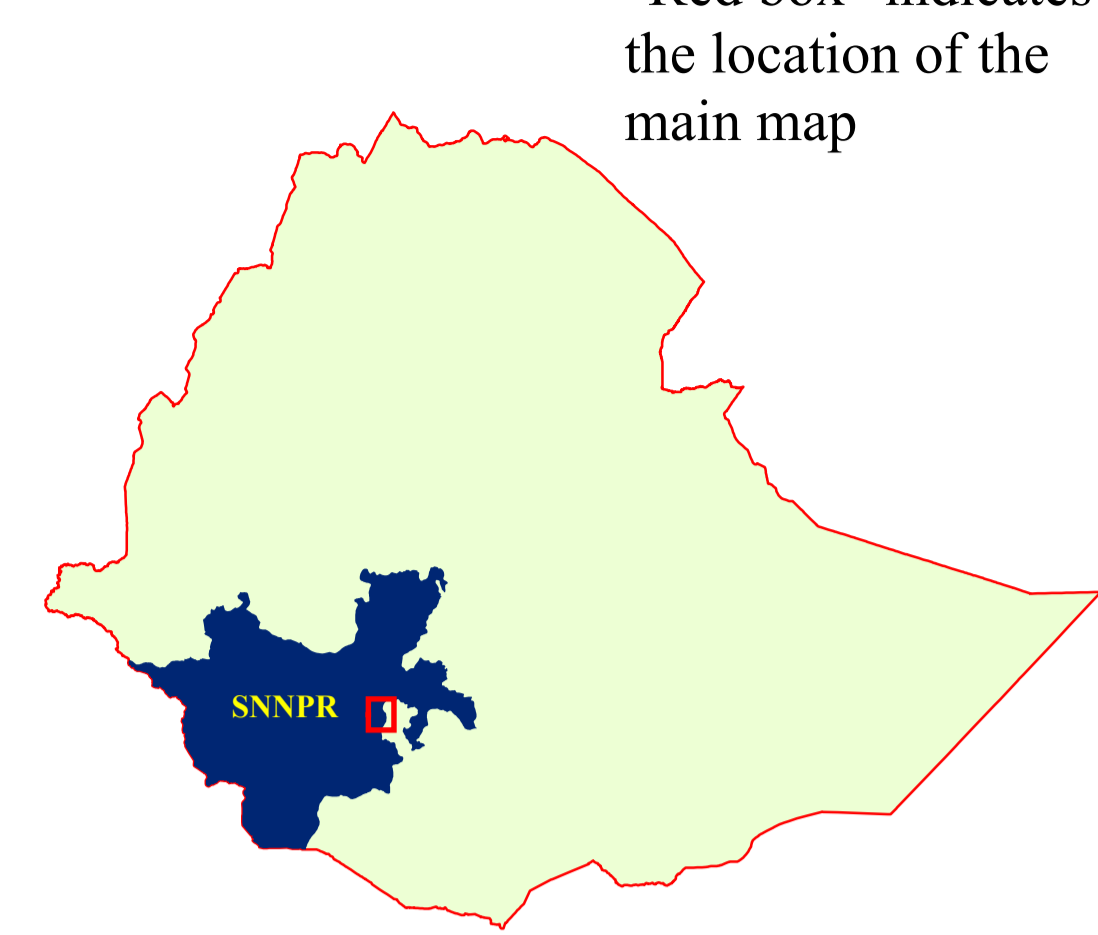
720000

710000







700000

690000

680000



Groundwater Potential Zones

-  Borehole
-  Low (unsuitable)
-  Low
-  Moderate
-  High
-  Very high

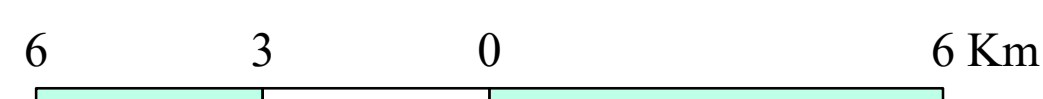
 Asphalt road

GroundWater mapping

Hydrogeological Mapping Using Remote Sensing, GIS and Geophysical Surveying

December, 2021

1:100,000



Coordinate system: UTM Zone 37N
 Projection: Transverse Mercator
 Datum: WGS 1984
 Unit: Meter



Ministry of Water and Energy