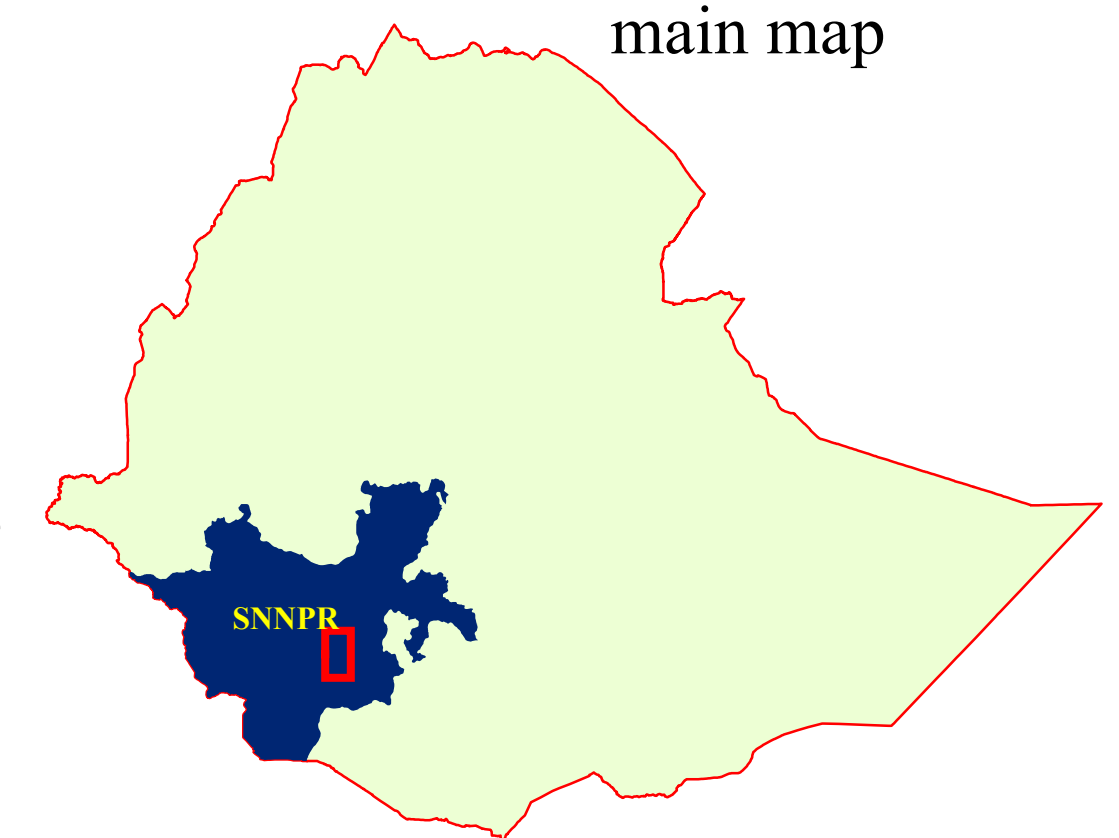
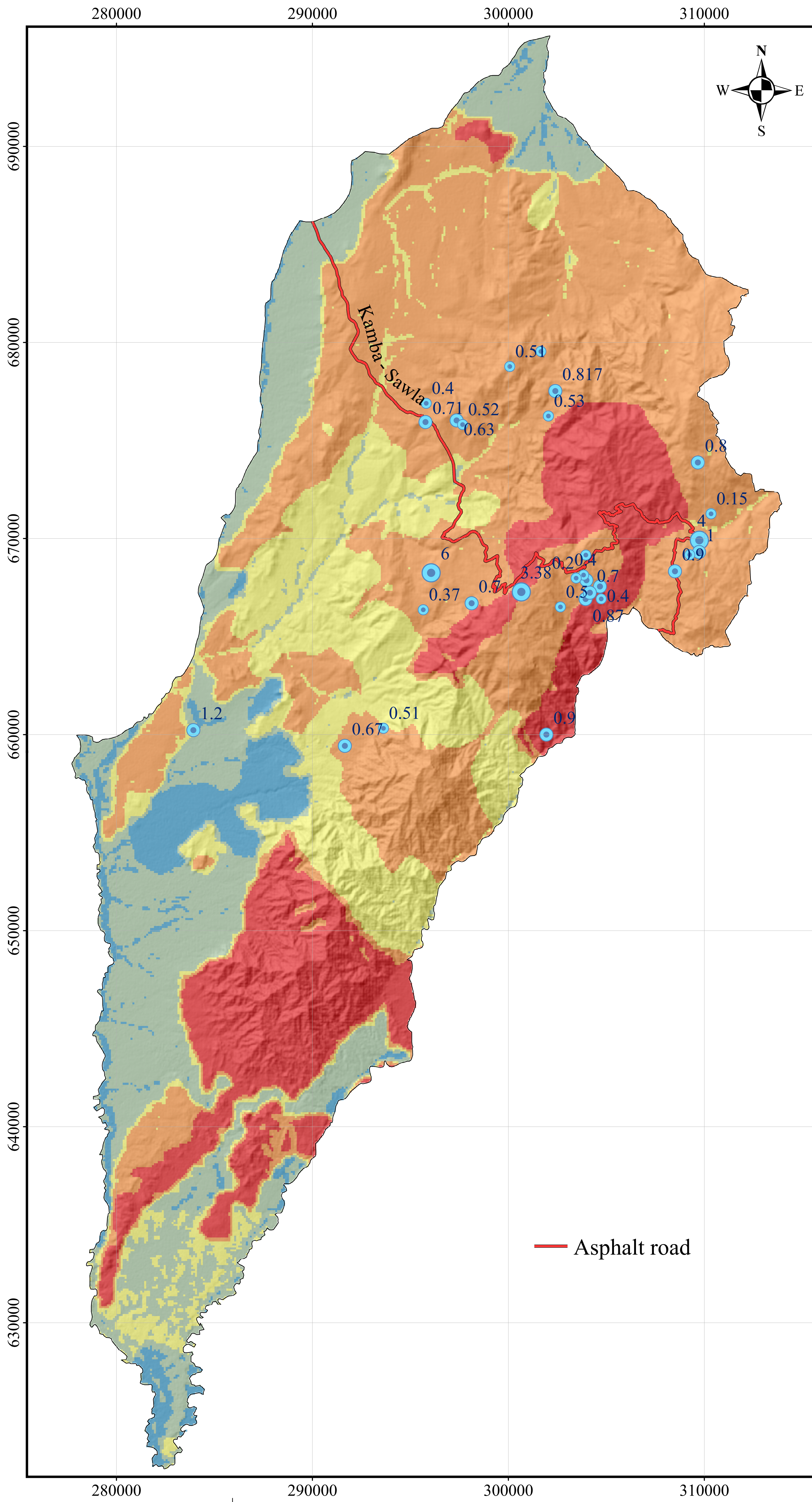


Map of Groundwater Potential Zones for Kemba Woreda

"Red box" indicates the location of the main map



Groundwater Potential Zones

- Very low (unsuitable)
- Low
- Moderate
- High
- Very high

Borehole yield (l/s)

- 0.01 - 0.58
- 0.59 - 1.20
- 1.21 - 2.60
- 2.61 - 6.00

— Asphalt road