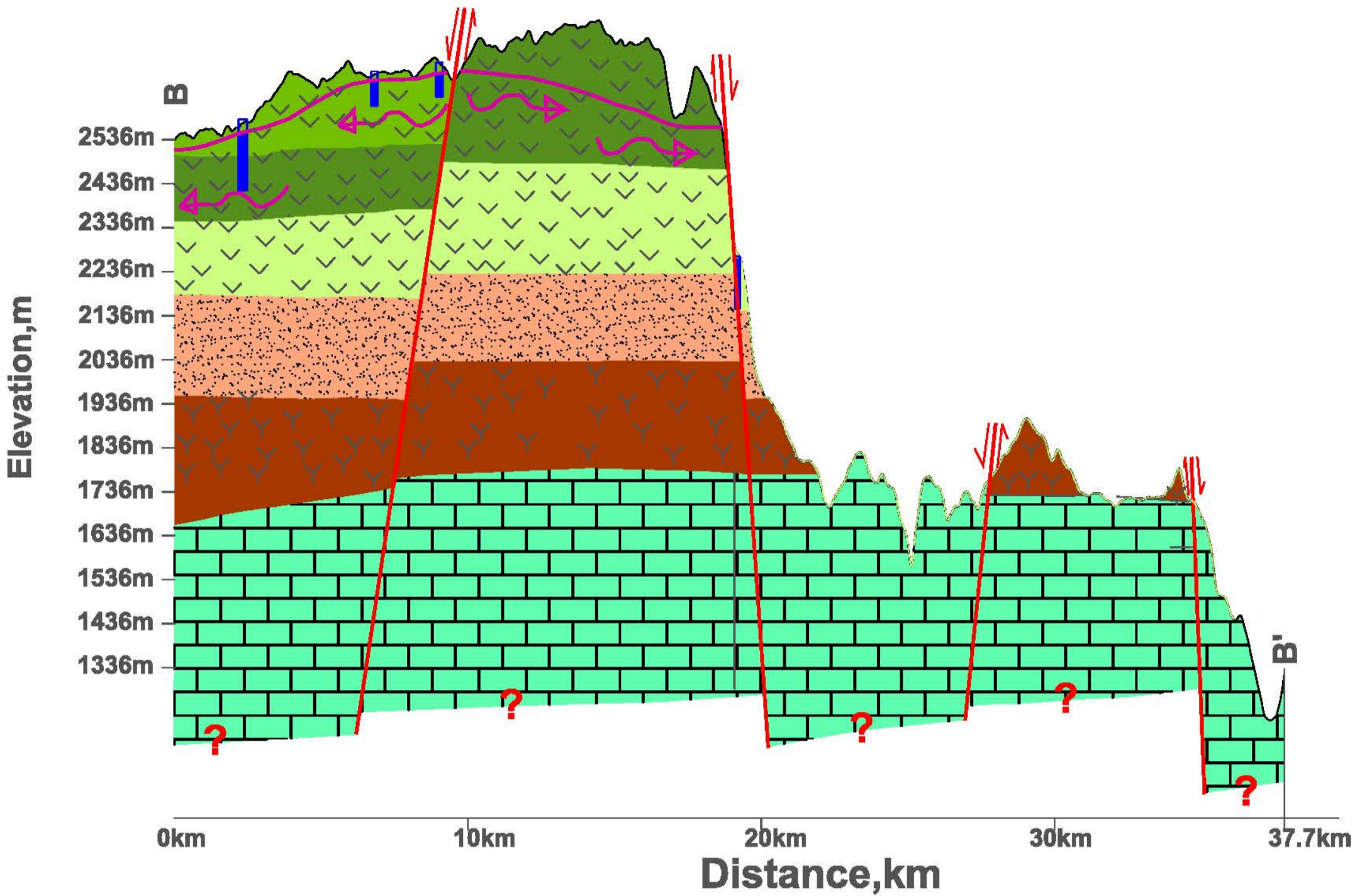


Simplified Hydrogeological X-Section of Girar Jarso Woreda

Scale VH = 15



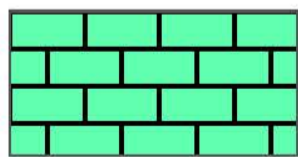
Hydrolithology



Highly Productive Basaltic Aquifer (Alba formation)



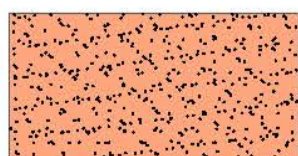
Moderate to Highly Productive Basaltic Aquifer (Tarmaber formation) Chefé 2
 $Q = 4/s$ $T = 3.7 \cdot 10^{-2} \text{ m}^2/\text{min}$



Low to Moderate productive Fissured & Karstic aquifer (Limestone aquifer)



Low productive Basaltic Aquifer (Alaje formation)



Very Low productive Aquifer (upper Sandstone)



Aquitard



Borehole



Faults

Groundwater Level

Groundwater flow direction