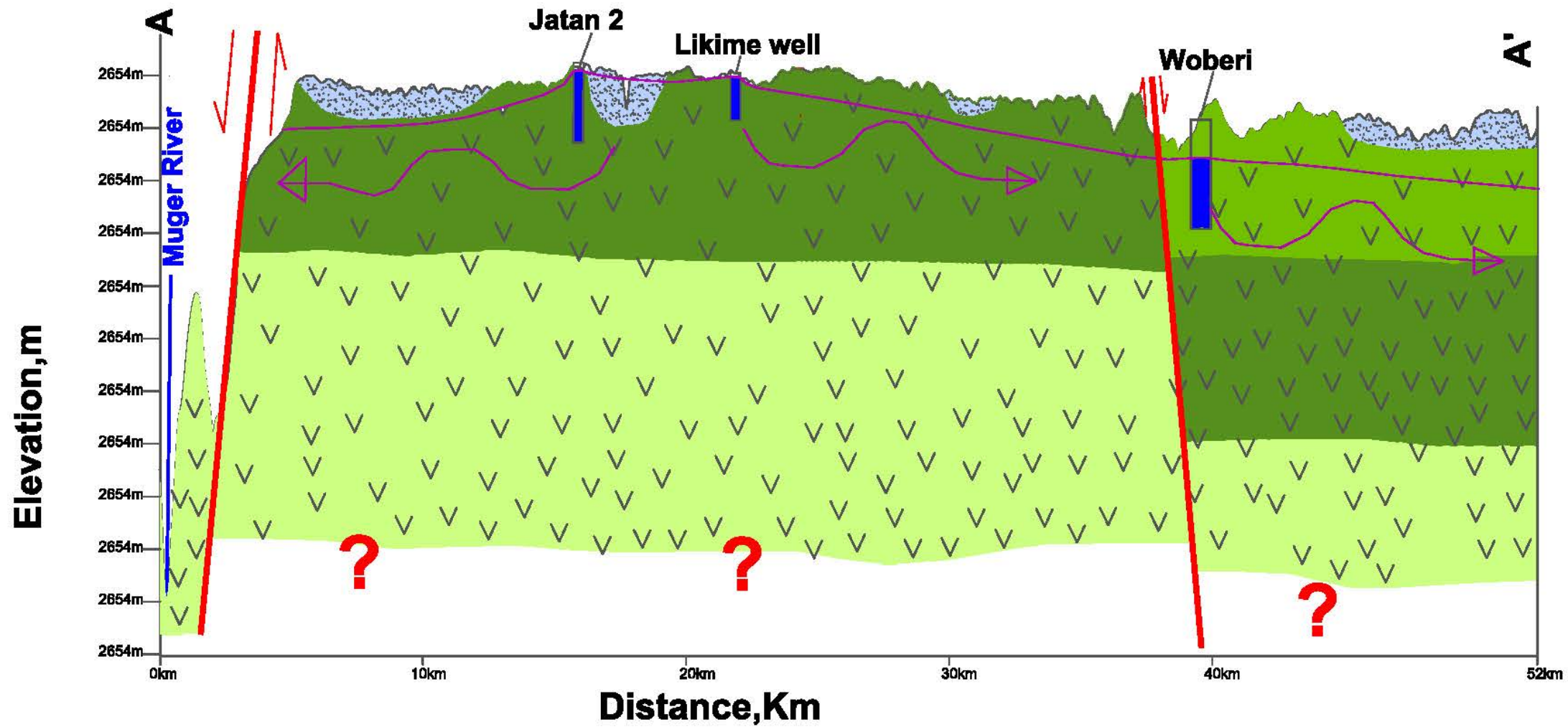


Simplified Hydrogeological X-Section of Wuchale Woreda Scale VH = 20



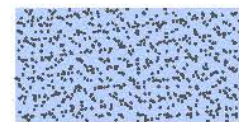
Hydrolithology



Very high productive Aiba Basalt
Likime well, $Q = 90 \text{ l/s}$, $T = 1.65 \text{ m}^3/\text{d}$, $\text{SWL} = 5.7 \text{ m}$
Jatani 2, $Q = 9.5 \text{ l/s}$, $\text{SWL} = 3 \text{ m}$



highly productive Tarmaber Basalt
Woberi well $Q = 16 \text{ l/s}$, $\text{SWL}, 71 \text{ m}$



Moderate productive Intergranular aquifer



Low productive Ashangi Basalt

Boreholes



faults

GWL

GW flow direction

