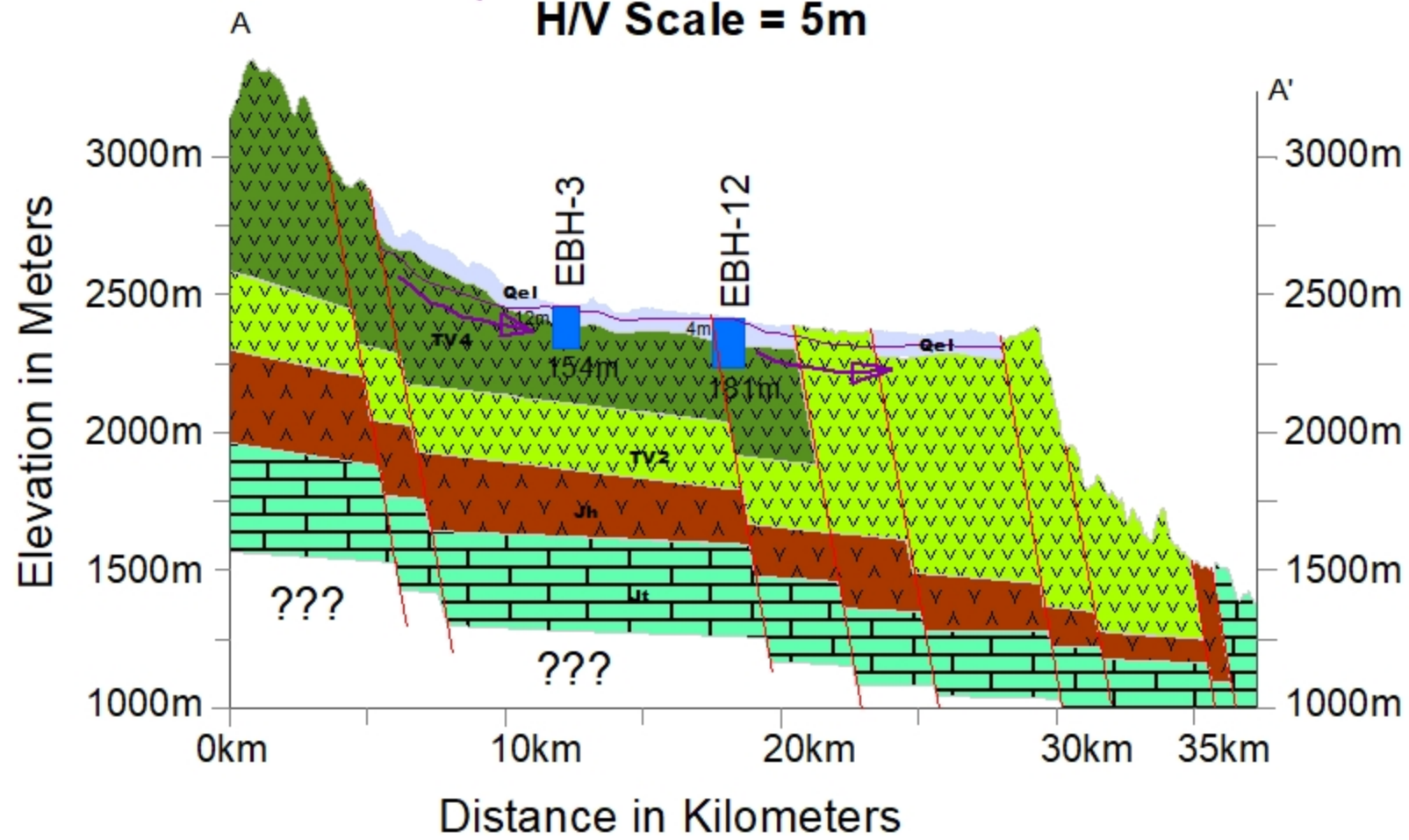
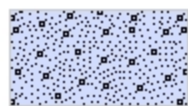


Simplified Hydrogeological X-Section of Enebise Sar Midir Wereda along A - A'

H/V Scale = 5m



Hydro-Lithology



Very Low Productive Porous (Intergranular) Aquifer of Quaternary Elluvial Deposits (Qel)



Moderate Productive Basaltic Aquifer (TV2)
Ranges of $T = 50$ to $100 \text{ m}^2/\text{day}$ & $Q = 10$ to 15 l/s .
(Aiba Formation)



Highly productive Mesozoic aquifer (Jt)
 $T = 10.1 - 100 \text{ m}^2/\text{day}$, Specific capacity
 $1.1 - 10 \text{ l/sm}$, & $Q = 5 - 25 \text{ l/s}$ (Antalo Limestone)



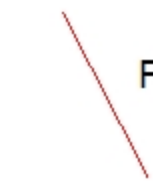
Extensive & Highly Productive Fissured Aquifer Basaltic aquifer (TV4)
 $T = 100$ to $300 \text{ m}^2/\text{day}$, & the specific capacity
 1.3 to 2.3 l/s/m . & $Q = 25$ to 30 l/s .
(Tarmaber-Megezez Formation)



Aquicludes (Jh)
Formation with essentially no groundwater resources.
The formations are represented by gypsum.
(Gohatsion Formation)



Borehole



Faults



Groundwater Level



Groundwater Flow Direction