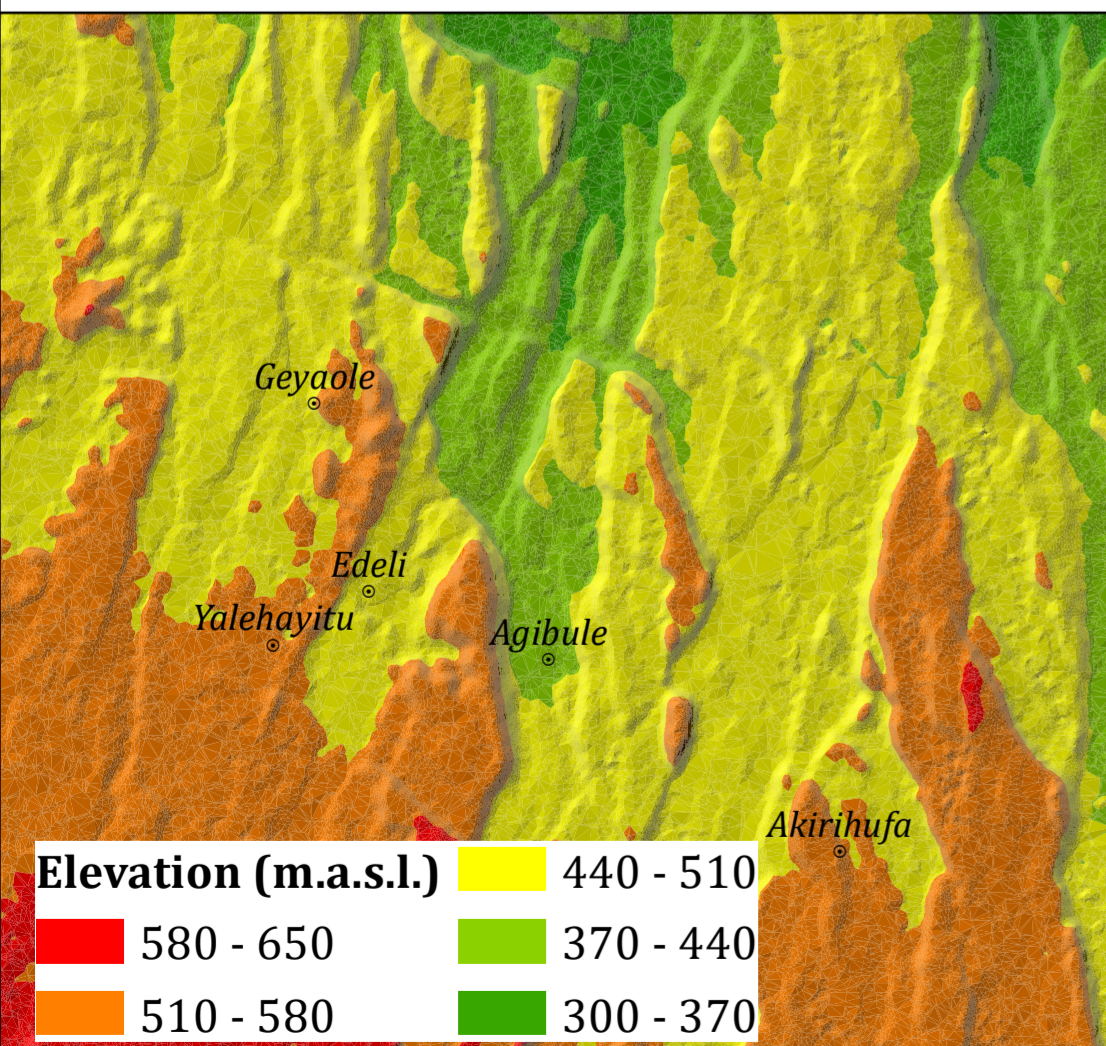
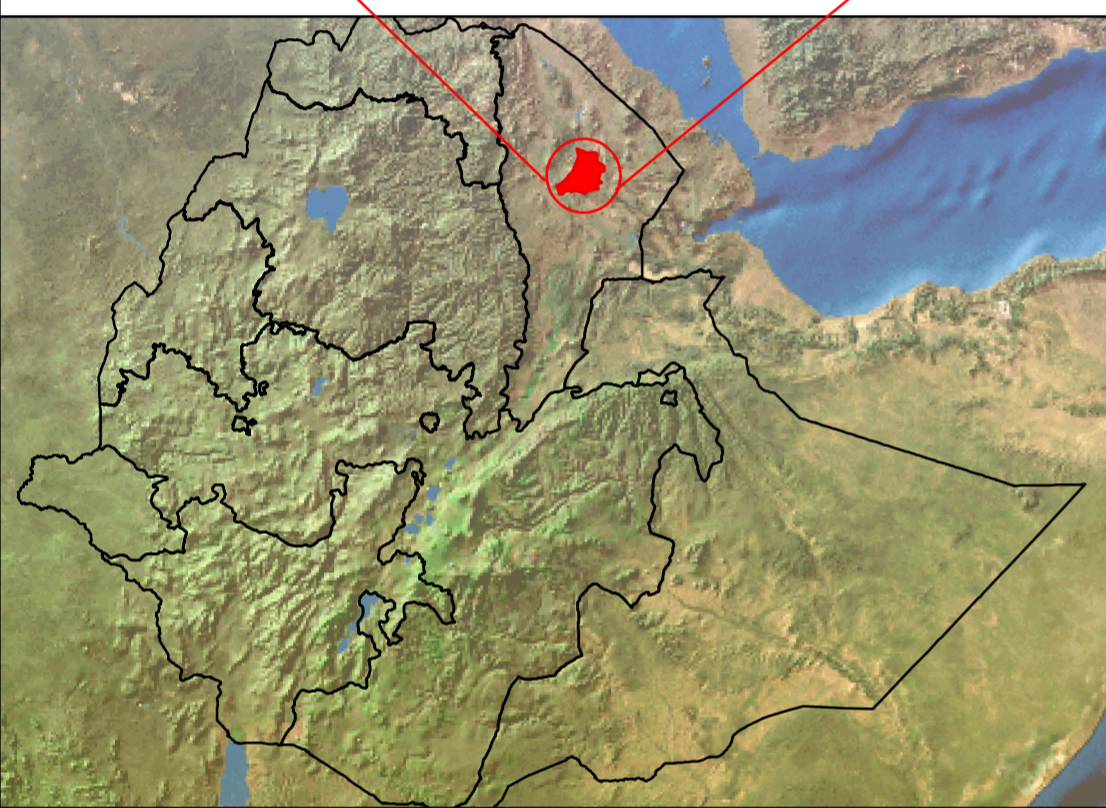
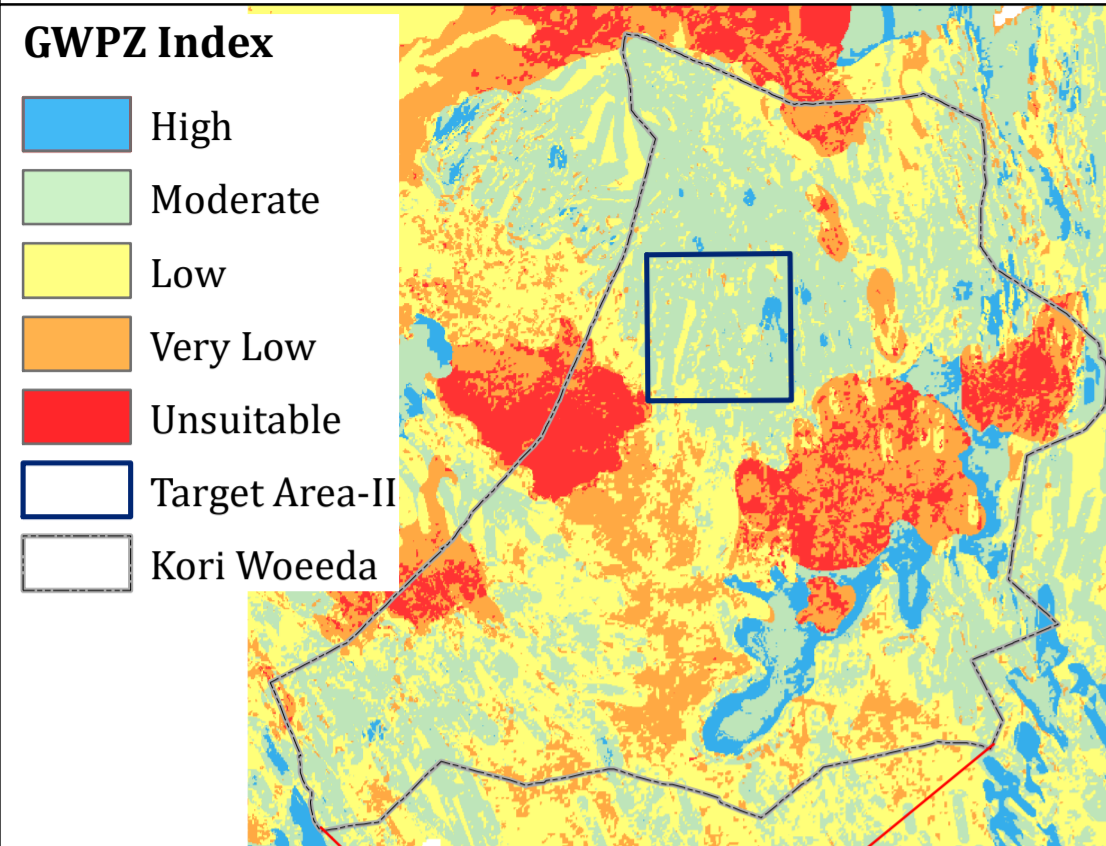
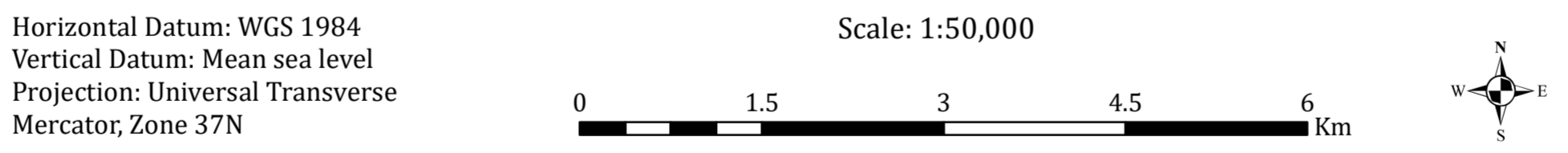
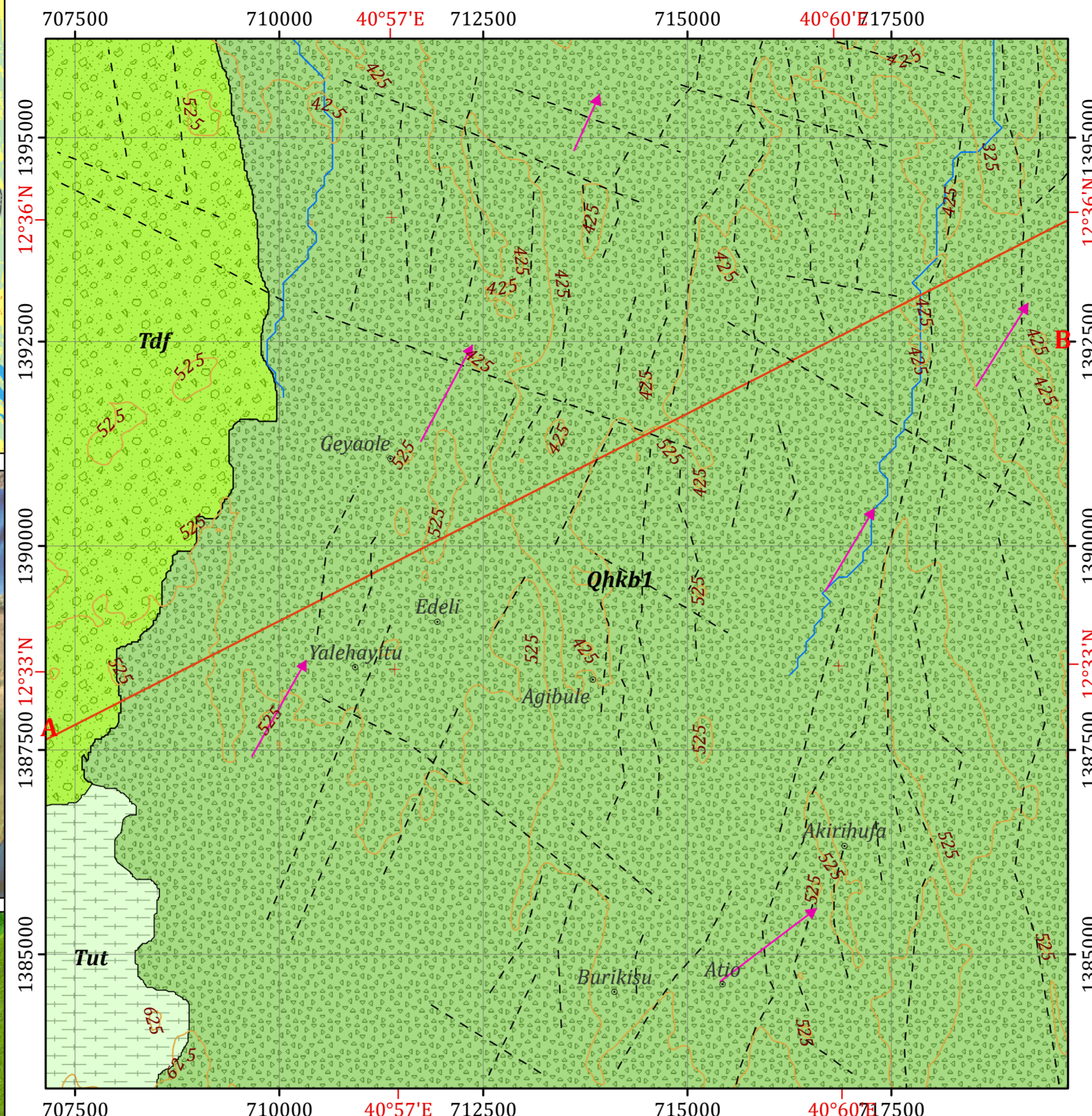


INSET MAPS



HYDROGEOLOGICAL MAP OF TARGET AREA-II WITHIN KORI WOREDA



Legend

AQUIFER CLASSIFICATION

- Aquifer class-I:** Highly productive aquifers ($T=10.1-100 \text{ m}^2/\text{d}$, $q = 1.1 - 10 \text{ l/s}\cdot\text{m}$, $Q= 5 -25 \text{ l/s}$ for wells and/or springs) developed in the basaltic lava flows and cinder cones locally extremely productive where recharge and topographic positions are favorable.
- Aquifer class-II:** Highly productive fissured aquifers ($T =10-100\text{m}^2/\text{d}$, $q=1-10 \text{ l/s/m}$, $Q =5-25\text{l/s}$ for wells) or locally extremely productive aquifers consisting of unconsolidated sedimentary rocks
- Aquifer class-III:** Low productive fissured aquifers ($T =0.1-1\text{m}^2/\text{d}$, $q=0.001-0.01\text{l/s/m}$, $Q =0.05-0.5 \text{ l/s}$ for wells and/or springs) in which flow is mainly developed in irregular system of fissures & weathered rock

LITHOSTRATIGRAPHIC UNITS

- Marginal Acidic Volcanics (Tut)
- Lower Stratoid Series (Qhkb1)
- Denakil formation (Tdf)

GEOLOGICAL STRUCTURES

- Lineament

OTHER SYMBOLS

- Locality
- Cross Section Line (A-B)
- Groundwater Contour
- Contour Line (25 m Interval)
- Drainage
- Flow Direction

HYDROGEOLOGICAL MAPPING FOR CLIMATE RESILIENT WASH IN ETHIOPIA - LOT-1



Hydrogeological map production : Dr. Dessie N. & Shiferaw L.
Geological map production : Dr. Tarekegn T.& Dr. Yohannes D.
Cartography:- Assaminew G. February, 2022

Disclaimer:
Administrative boundaries: CSA 2007
Built-up areas: Sentinel-2, Openstreetmap 2021