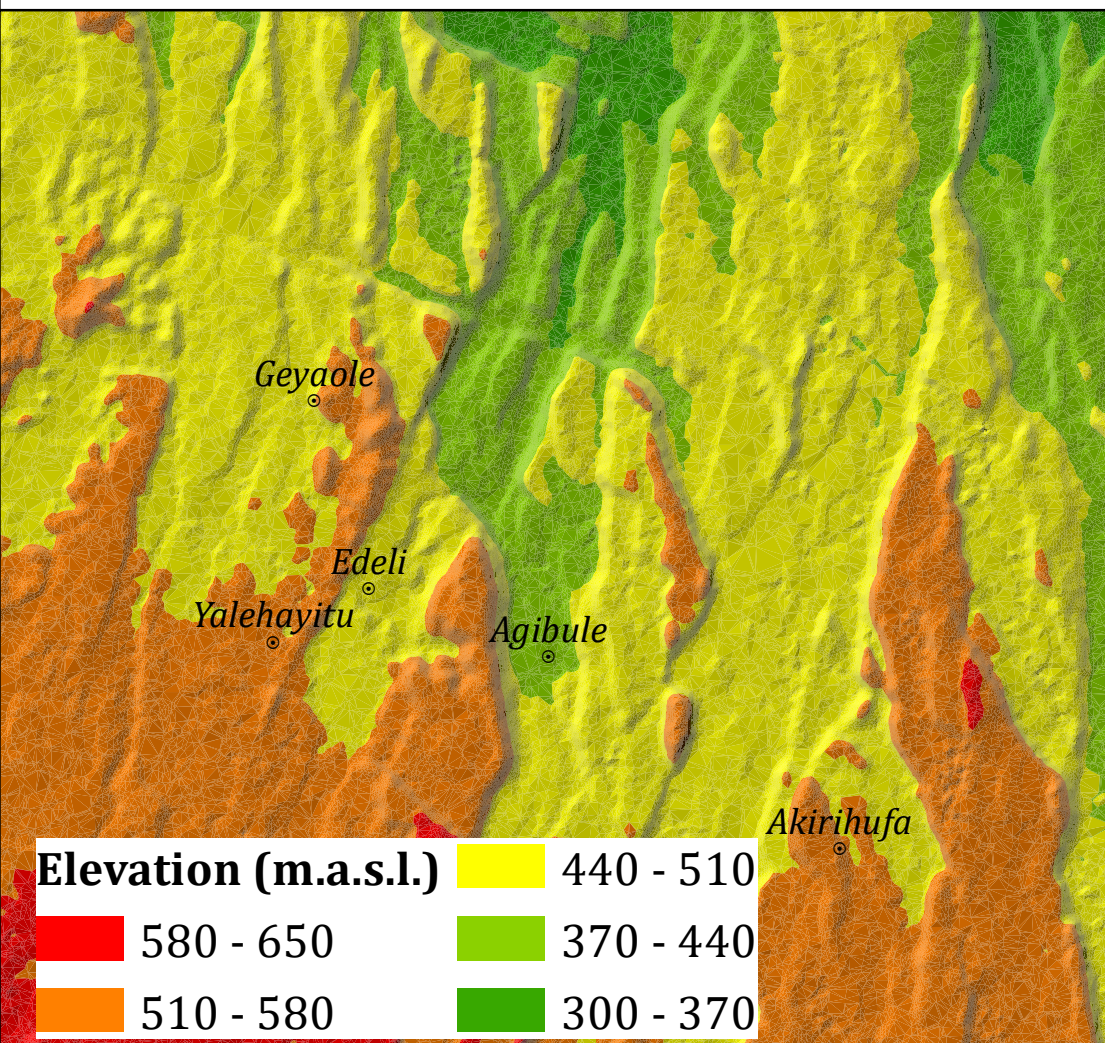
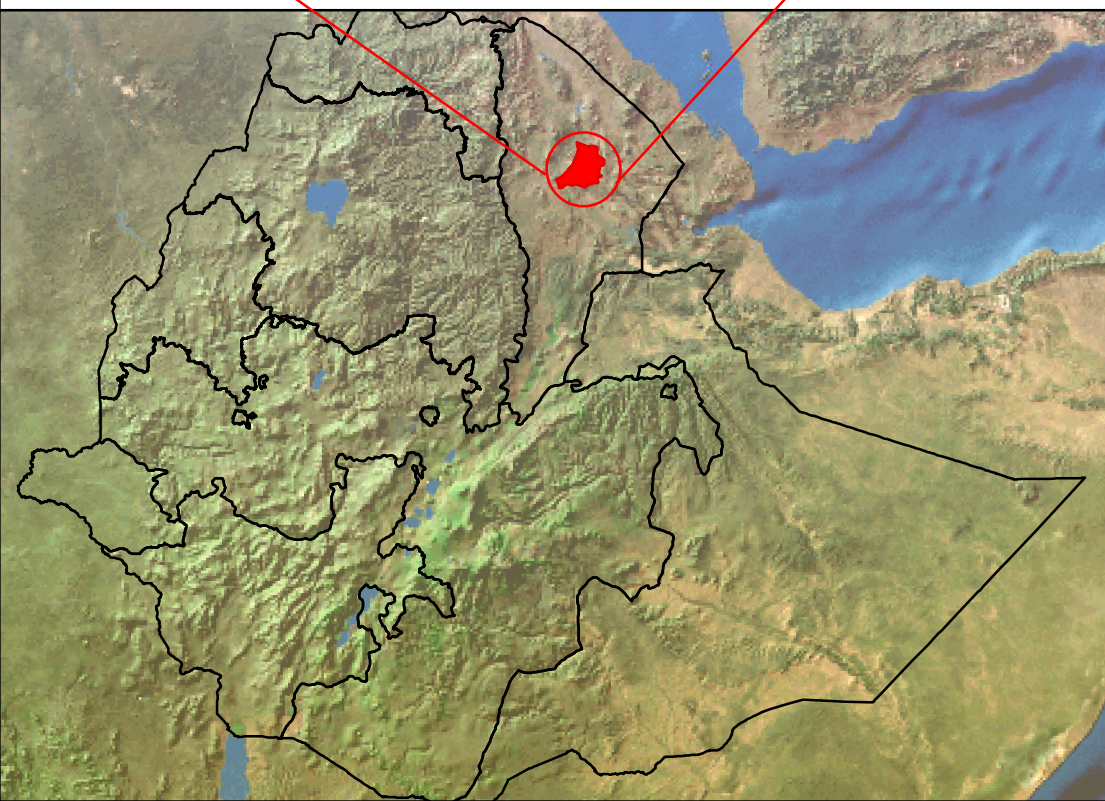
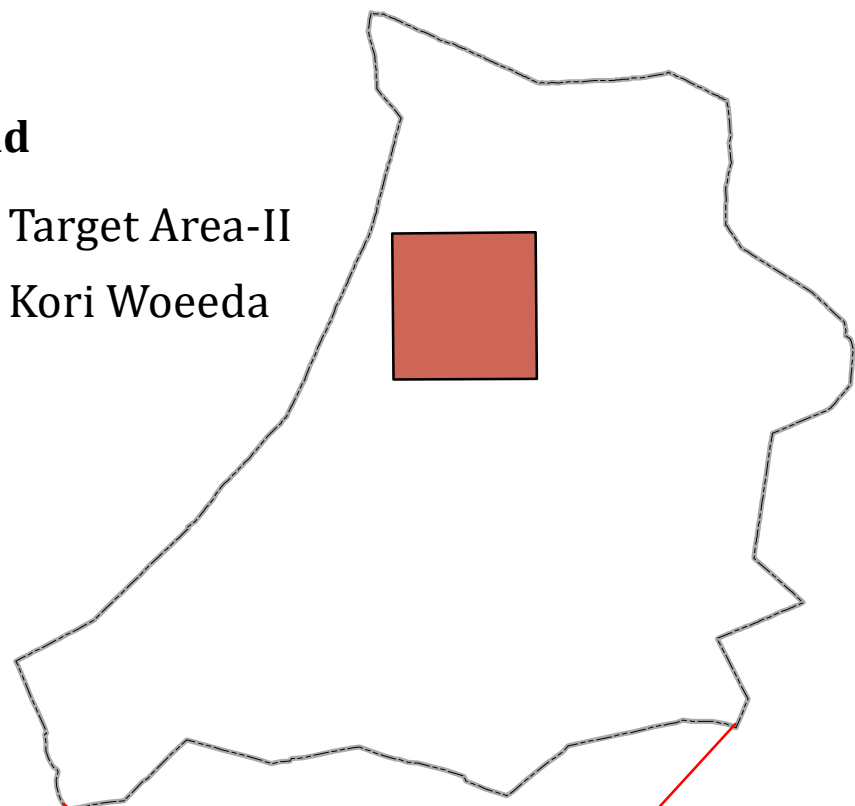


**INSET MAPS**

**Legend**

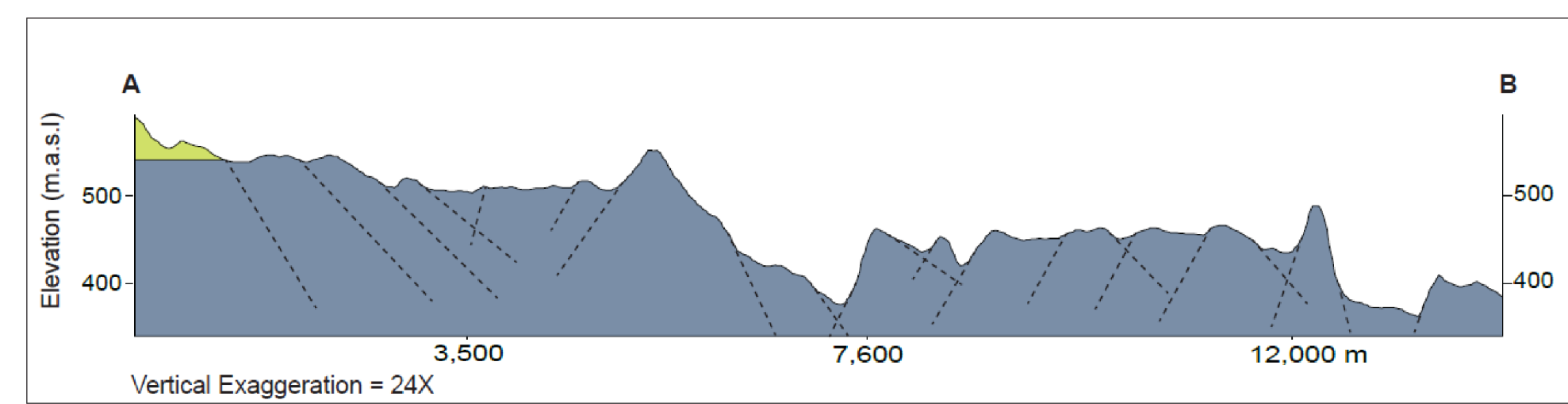
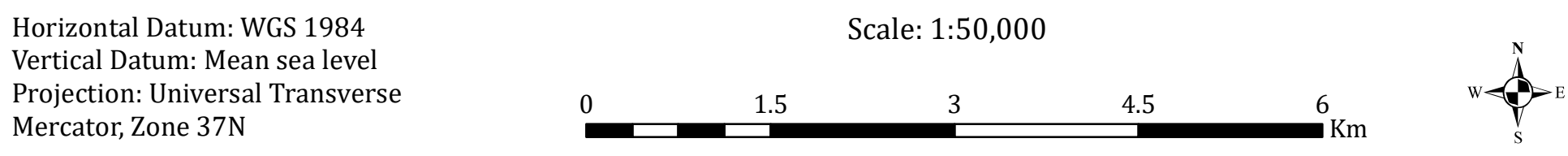
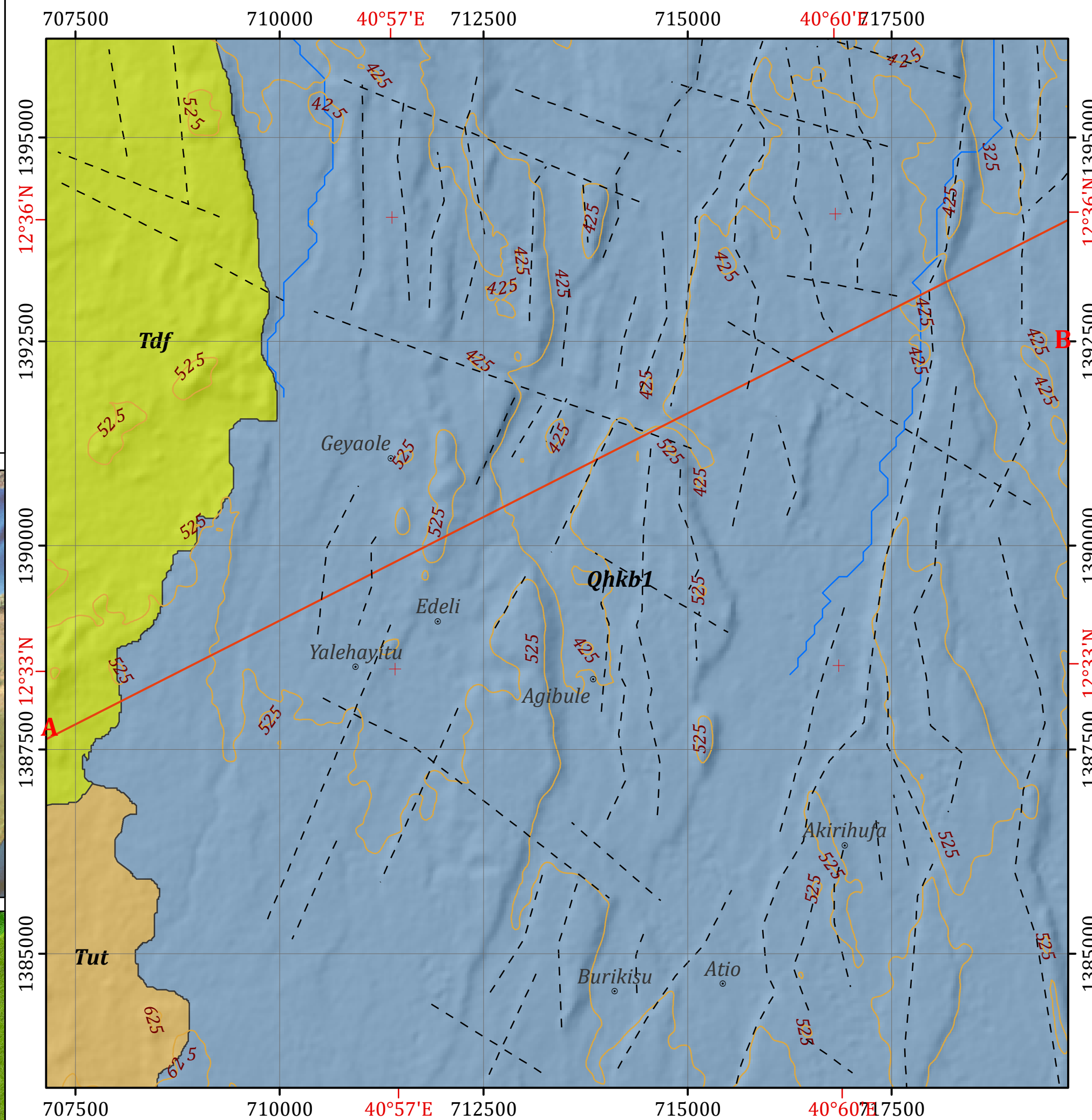
- Target Area-II
- Kori Woeda



**Disclaimer:**

Administrative boundaries: CSA 2007  
 Built-up areas: Sentinel-2, Openstreetmap 2021

**GEOLOGICAL MAP OF TARGET AREA-II WITHIN KORI WOREDA**



**Legend**

**LITHOSTRATIGRAPHIC UNITS**

- Tut** Marginal Acidic Volcanics:- Undifferentiated acidic volcanics-rhyolite and trachytes
- Tdf** Denakil formation:- Light red partly solidified gravel and sand, containing pebbles of mainly volcanic rocks.
- Qhkb1** Lower Stratoid Series:- Undifferentiated lavas, plug and cinder cones, consisting mainly basaltic subordinately intermediate and acidic rocks, partly of alkaline affinity.

**GEOLOGICAL STRUCTURES**

- - - - - Lineament

**OTHER SYMBOLS**

- ⊙ Locality
- ~ Contour Line (25 m Interval)
- ~ Drainage
- A B Cross Section Line

**HYDROGEOLOGICAL MAPPING FOR CLIMATE RESILIENT WASH IN ETHIOPIA - LOT-1**



Map production : Dr. Tarekegn T.& Dr. Yohannes D.  
 Cartography:- Assaminew G.