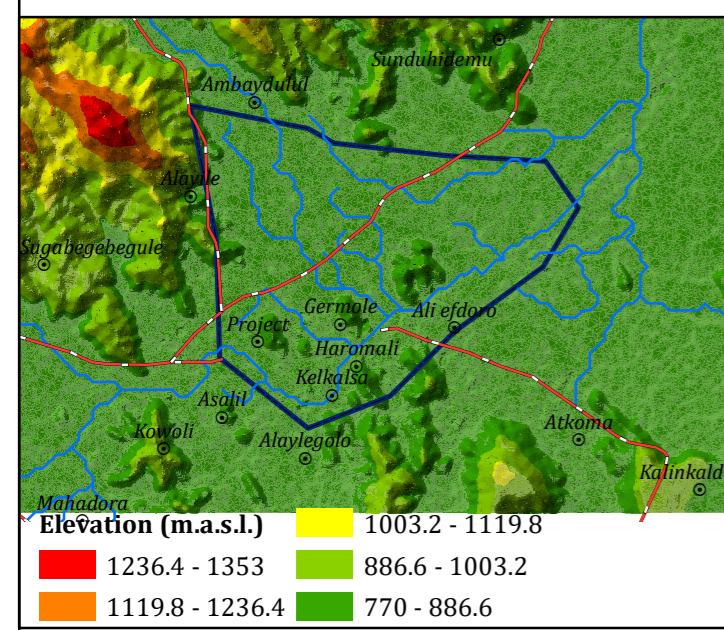
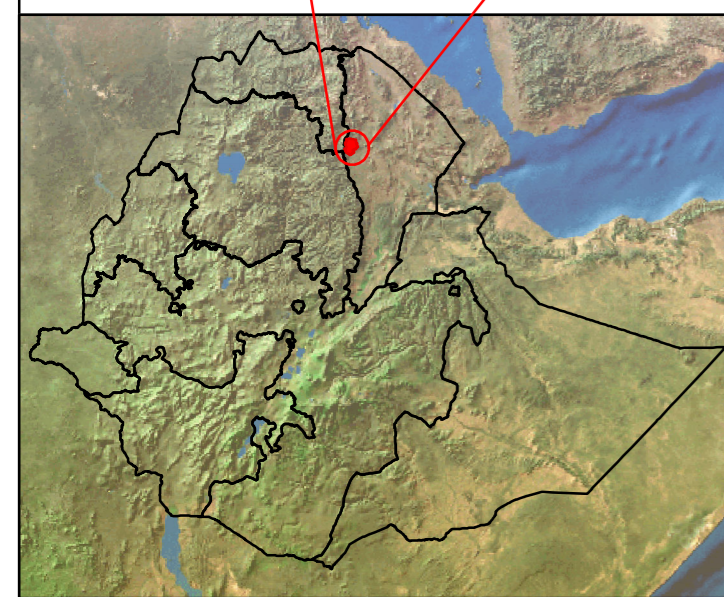
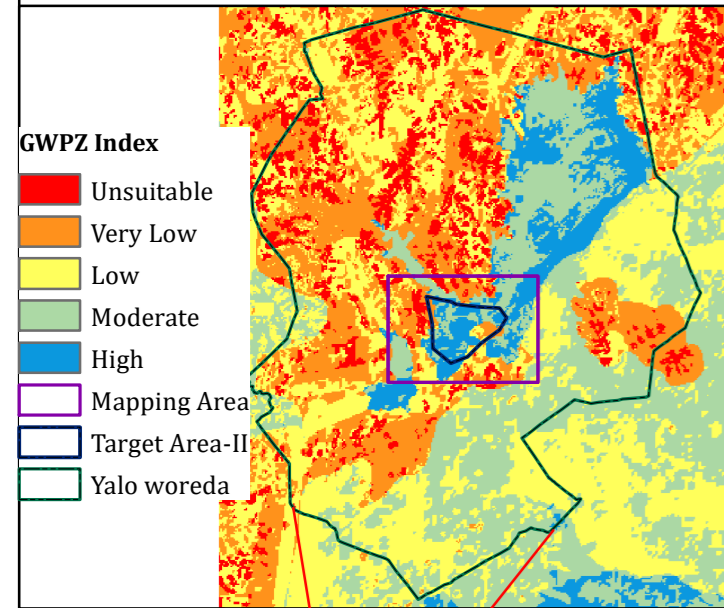
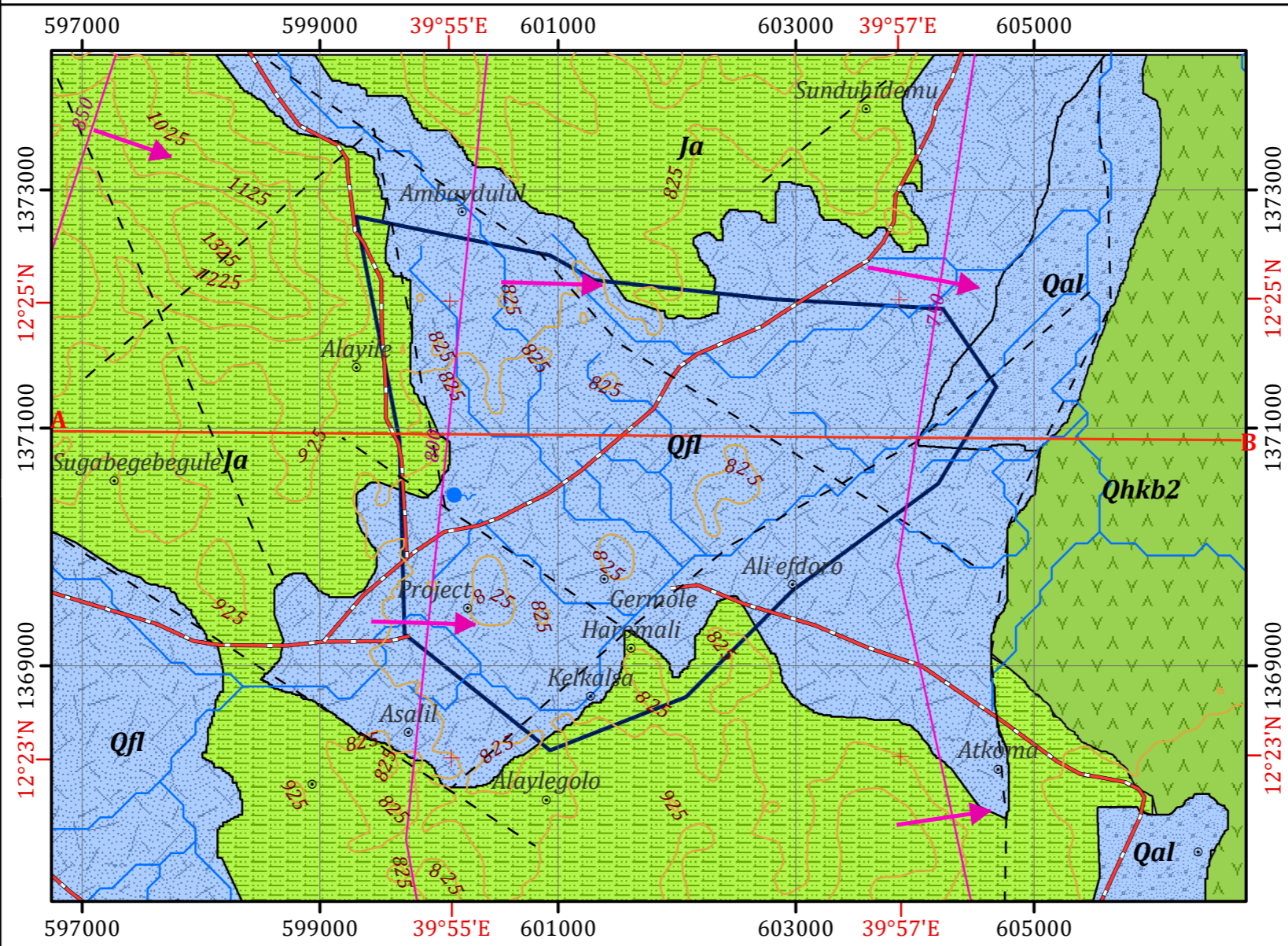


### INSET MAPS



## HYDROGEOLOGICAL MAP OF TARGET AREA-II WITHIN YALO WOREDA



### Legend

#### AQUIFER CLASSIFICATION

- Aquifer class-I:** Highly productive porous shallow aquifers ( $T=10-100\text{ m}^2/\text{d}$ ,  $q=1-10\text{ l/s}\cdot\text{m}$ ,  $Q=5-25\text{ l/s}$  for wells and/or springs) or locally extremely productive aquifers
- Aquifer class-II:** Highly productive aquifers ( $T=10.1-100\text{ m}^2/\text{d}$ ,  $q=1.1-10\text{ l/s}\cdot\text{m}$ ,  $Q=5-25\text{ l/s}$  for wells and/or springs) developed in the basaltic lava flows and cinder cones locally extremely productive where recharge and topographic positions are favorable
- Aquifer class-III:** Moderately productive aquifer with fissured /bedding plane openings ( $T=1-10\text{ m}^2/\text{d}$ ,  $q=0.01-11\text{ l/s}\cdot\text{m}$ ,  $Q=0.5-5\text{ l/s}$  for wells) and locally highly productive aquifers in fracture zones and weathered zones with granular porosity

#### LITHOSTRATIGRAPHIC UNITS

- Qal** Alluvium
- Qfl** Fluvial Sediments
- Ja** Adigrat Sandstone
- Qhkb2** Upper Stratoid Series

#### GEOLOGICAL STRUCTURES

--- Lineament

#### OTHER SYMBOLS

- ⊙ Locality
- ⊙ Spring
- ~ Contour Line (25 m Interval)
- ~ Drainage
- ~ Main Road
- A-B Cross Section Line
- ~ Groundwater Contour
- Flow Direction
- Target Area-II

### HYDROGEOLOGICAL MAPPING FOR CLIMATE RESILIENT WASH IN ETHIOPIA - LOT-1



Hydrogeological map production : Dr. Dessie N. & Shiferaw L.  
Geological map production : Dr. Tarekegn T.& Dr. Yohannes D.  
Cartography:- Assaminew G.

**Disclaimer:**  
Administrative boundaries: CSA 2007  
Built-up areas: Sentinel-2, Openstreetmap 2021