

Legend

AQUIFER CLASSIFICATION

- Highly productive porous shallow aquifers (T=10–100m²/d, q=1–10l/s/m, Q=5–25 l/s for wells and/or springs) or locally extremely productive aquifers
- Highly productive aquifers (T=10.1–100 m²/d, q=1.1–10 l/s•m, Q=5–25 l/s for wells and/or springs) developed in the basaltic lava flows and cinder cones locally extremely productive where recharge and topographic positions are favorable
- Moderately productive aquifer with fissured /bedding plane openings (T=1–10m²/d, q=0.01–1l/s/m, Q=0.5–5l/s for wells) and locally highly productive aquifers in fracture zones and weathered zones with granular porosity

LITHOSTRATIGRAPHIC UNITS

- Qf1 Fluvial Sediments
- Ja Adigrat Sandstone
- Qhkb2 Upper Stratoid Series

GEOLOGICAL STRUCTURES

- Normal fault
- Lineament

OTHER SYMBOLS

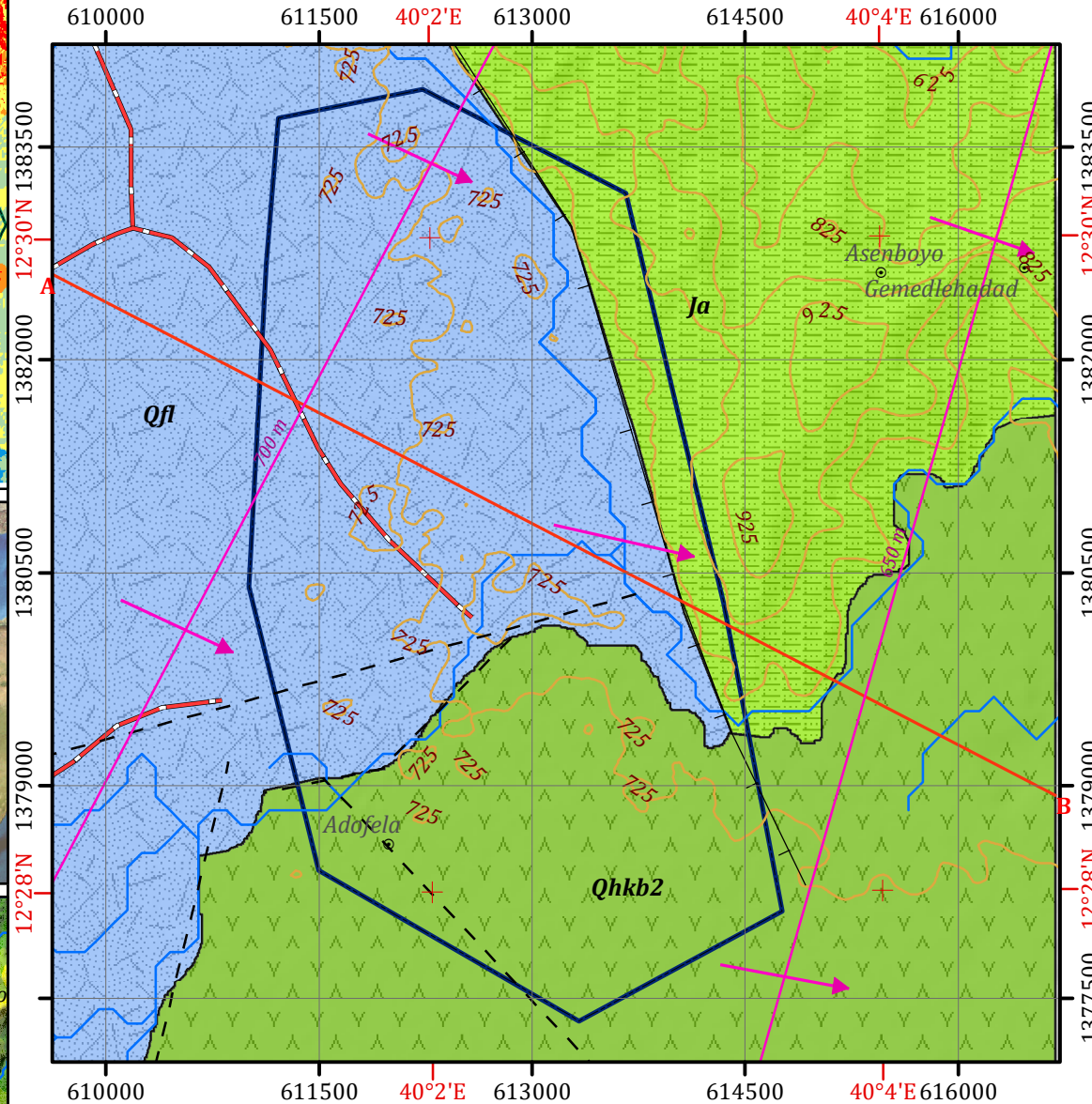
- Locality
- Flow Direction
- Contour Line (25 m Interval)
- Drainage
- Main Road
- Cross Section Line
- Target Area-I
- Groundwater Contour

HYDROGEOLOGICAL MAPPING FOR CLIMATE RESILIENT WASH IN ETHIOPIA - LOT-1



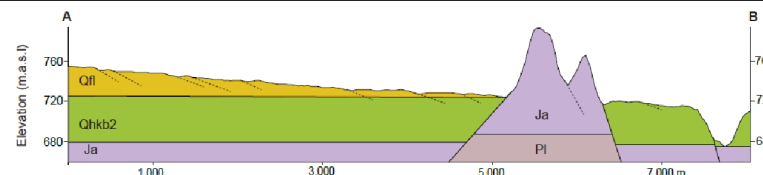
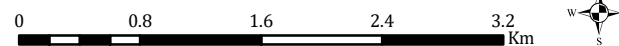
Hydrogeological map production : Dr. Dessie N. & Shiferaw L.
 Geological map production : Dr. Tarekgn T. & Dr. Yohannes D.
 Cartography:- Assaminew G. February, 2022

HYDROGEOLOGICAL MAP OF TARGET AREA-I WITHIN YALO WOREDA



Horizontal Datum: WGS 1984
 Vertical Datum: Mean sea level
 Projection: Universal Transverse Mercator, Zone 37N

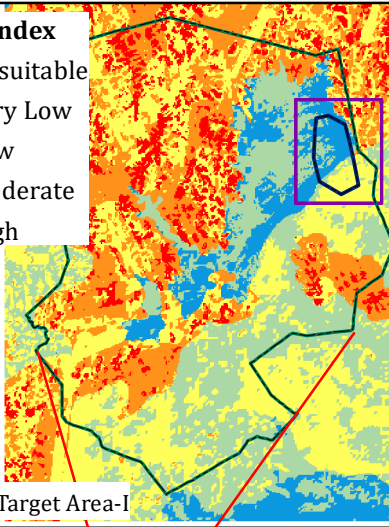
Scale: 1:50,000



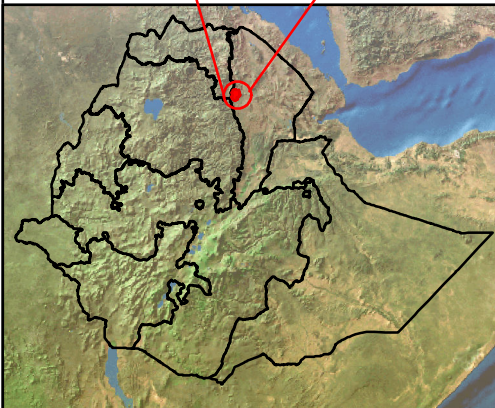
INSET MAPS

GWPZ Index

- Unsuitable
- Very Low
- Low
- Moderate
- High

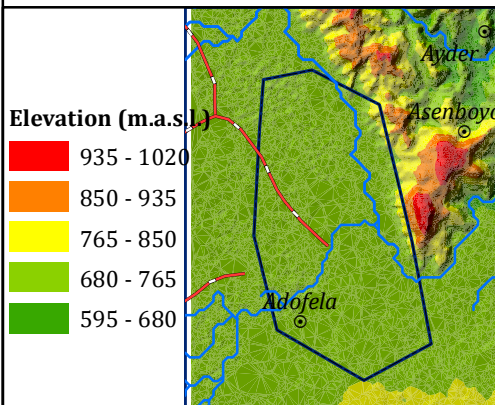


Target Area-I



Elevation (m.a.s.l.)

- 935 - 1020
- 850 - 935
- 765 - 850
- 680 - 765
- 595 - 680



Disclaimer:

Administrative boundaries: CSA 2007
 Built-up areas: Sentinel-2, Openstreetmap 2021