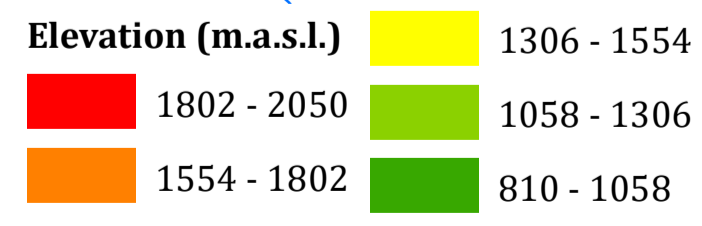
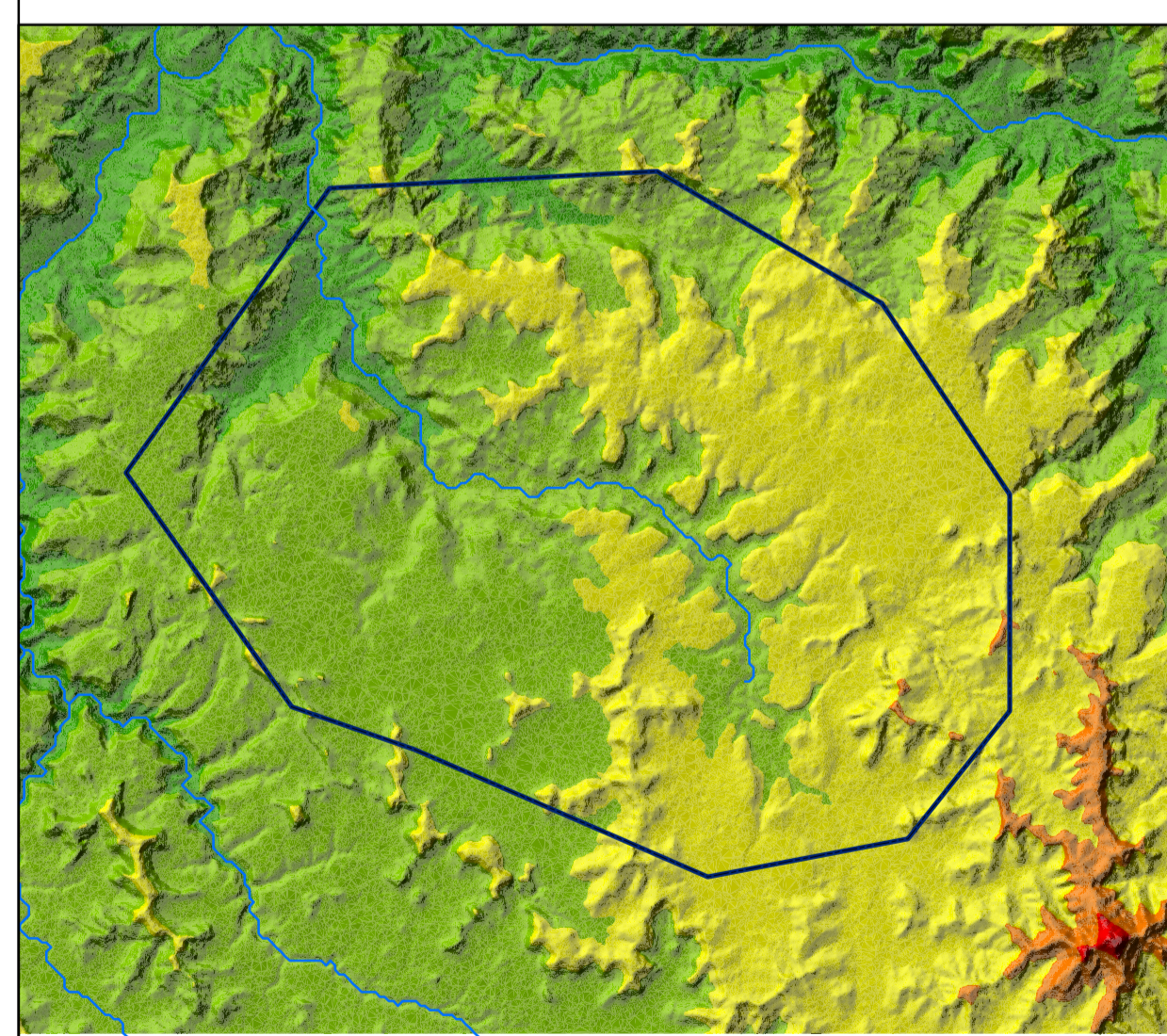
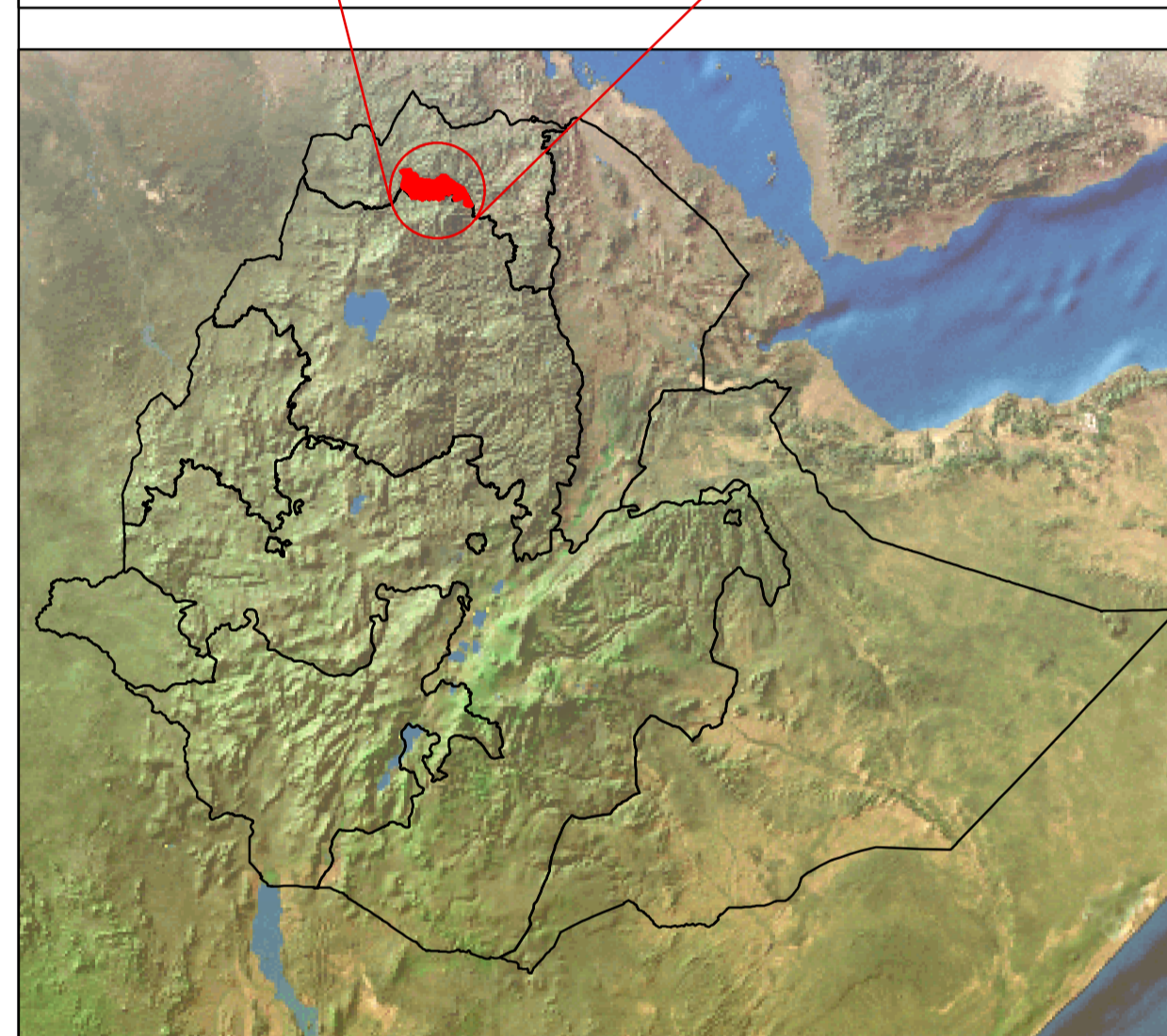
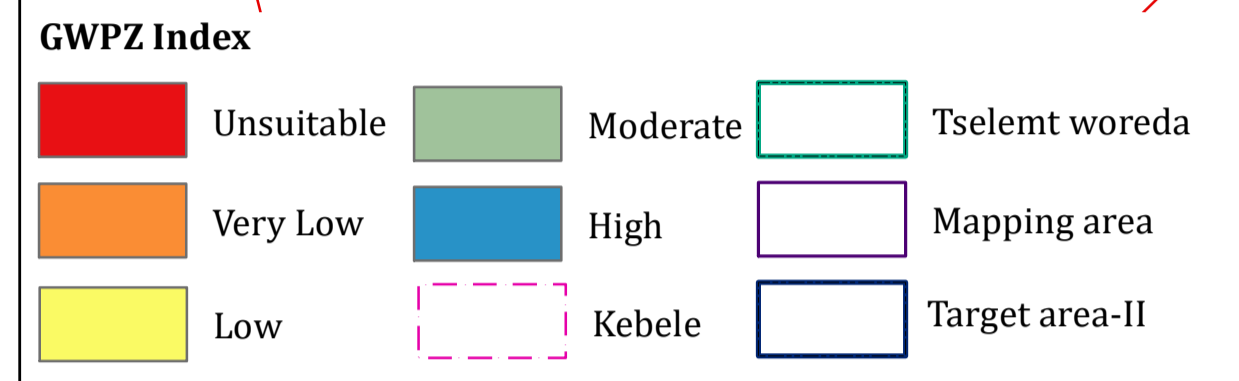
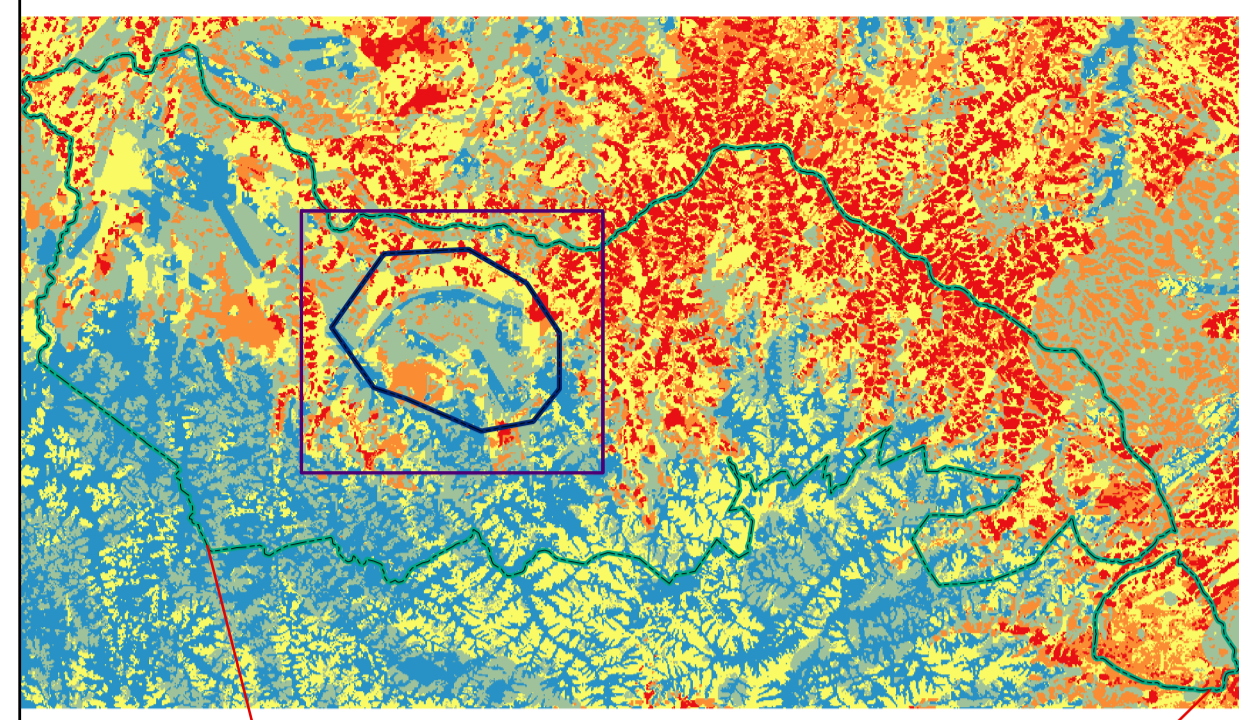
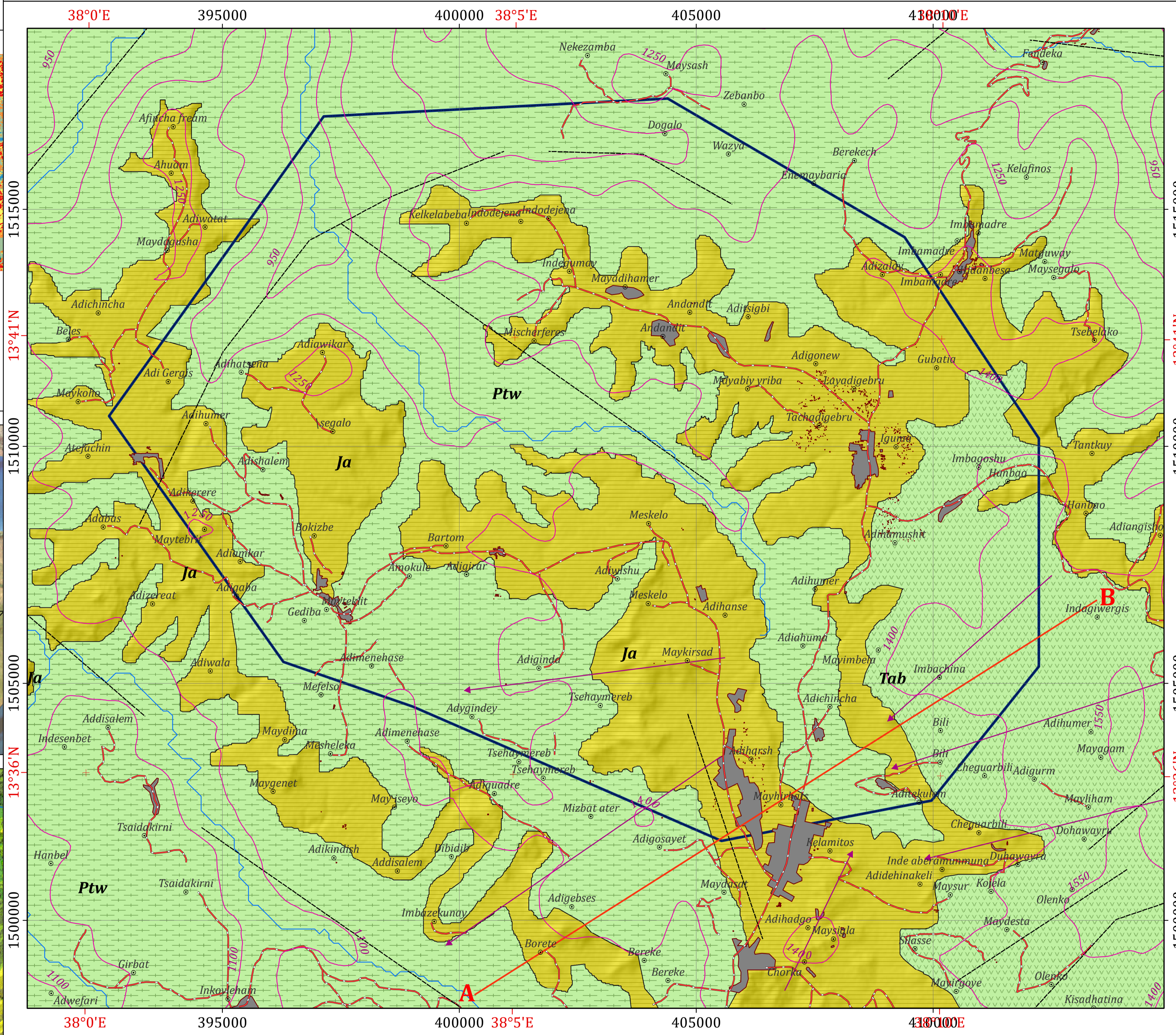


# HYDROGEOLOGICAL MAP OF TARGET AREA-II WITHIN TSELEMT WOREDA

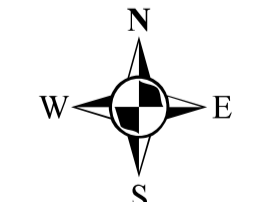
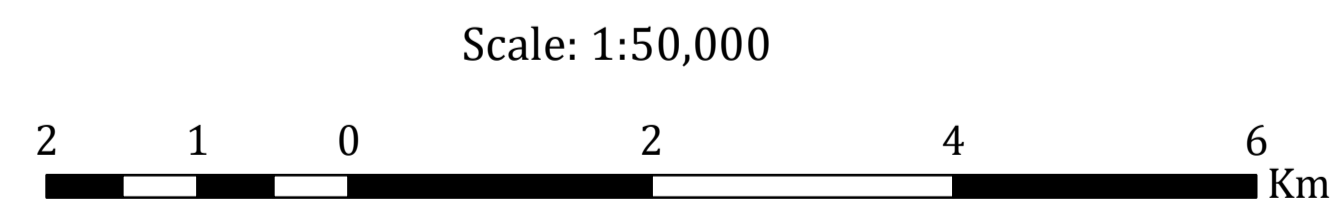
## INSET MAPS



**Disclaimer:**  
 Administrative boundaries: CSA 2007  
 Built-up areas: Sentinel-2, Openstreetmap 2021



Horizontal Datum: WGS 1984  
 Vertical Datum: Mean sea level  
 Projection: Universal Transverse Mercator, Zone 37N



### Legend

**AQUIFER CLASSIFICATION**

- Aquifer class-I: Moderately productive fissured/Porous aquifer, (T =1-10m 2/d, Q =0.5- 5 l/s)
- Aquifer class-II: Moderately productive fissured/Porous aquifer, (T =1-10m 2/d, Q =0.5- 5 l/s)

**LITHOSTRATIGRAPHIC UNITS**

- Ashange basalt: Alkaline and transitional basaltic flows and associated tuffs (Eocene-Oligocene)
- Adigrat sandstone: Sandstone, locally cross bedded, subordinate siltstone and shale
- Werii Slate: Black to purplish slate with calcareous intercalations

**GEOLOGICAL STRUCTURES**

- Lineament

**OTHER SYMBOLS**

- ⊙ Locality
- ~ Contour Line (25 m Interval)
- ~ Drainage
- ~ Main Road
- A-B Cross Section Line
- ~ Groundwater Contour
- Flow Direction
- Target Area-II
- Built-up Area

## HYDROGEOLOGICAL MAPPING FOR CLIMATE RESILIENT WASH IN ETHIOPIA - LOT-1



Hydrogeological map production : Dr. Dessie N. & Shiferaw L.  
 Geological map production : Dr. Tarekgn T. & Dr. Yohannes D.  
 Cartography:- Assaminew G.  
 February, 2022

