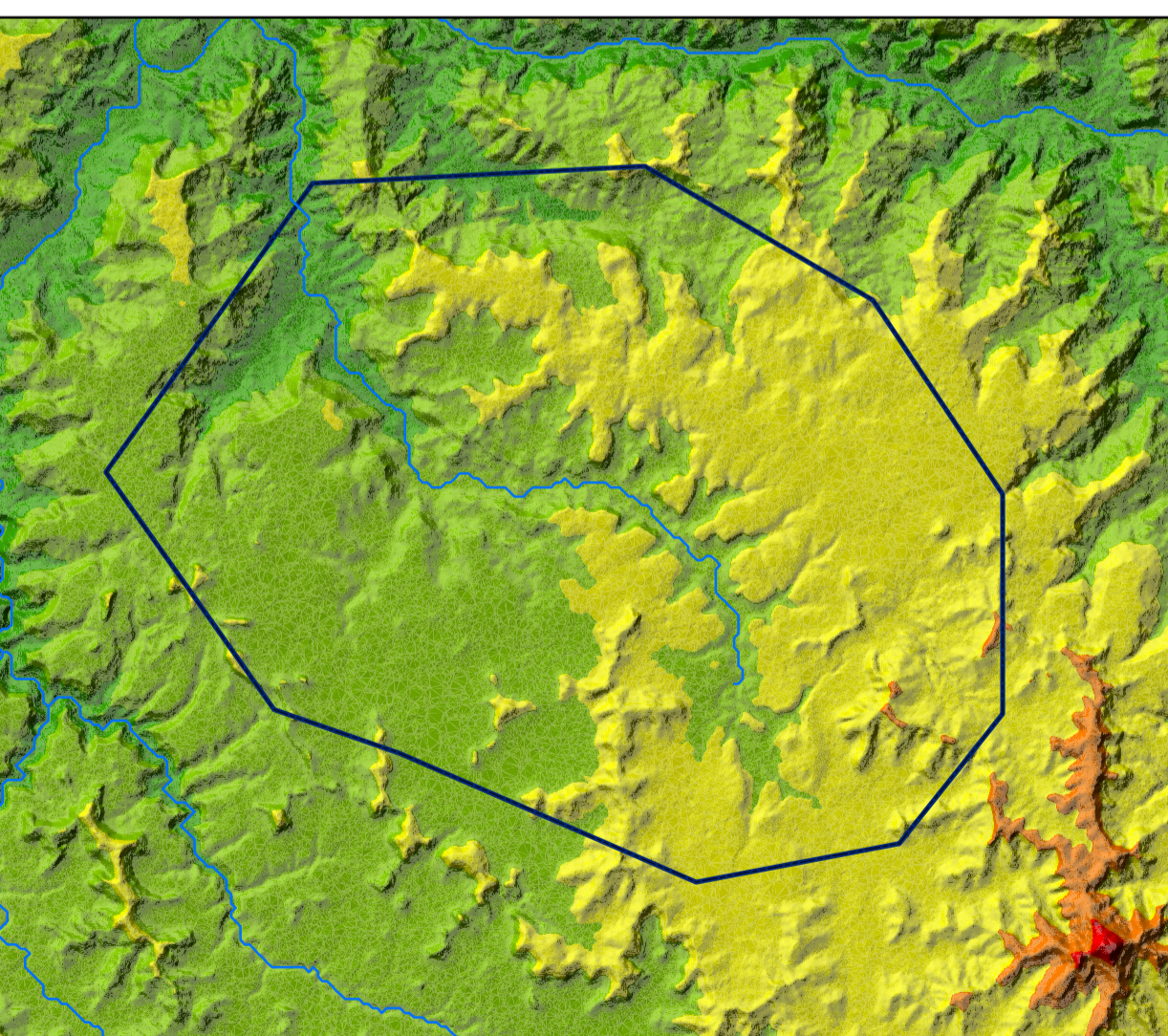
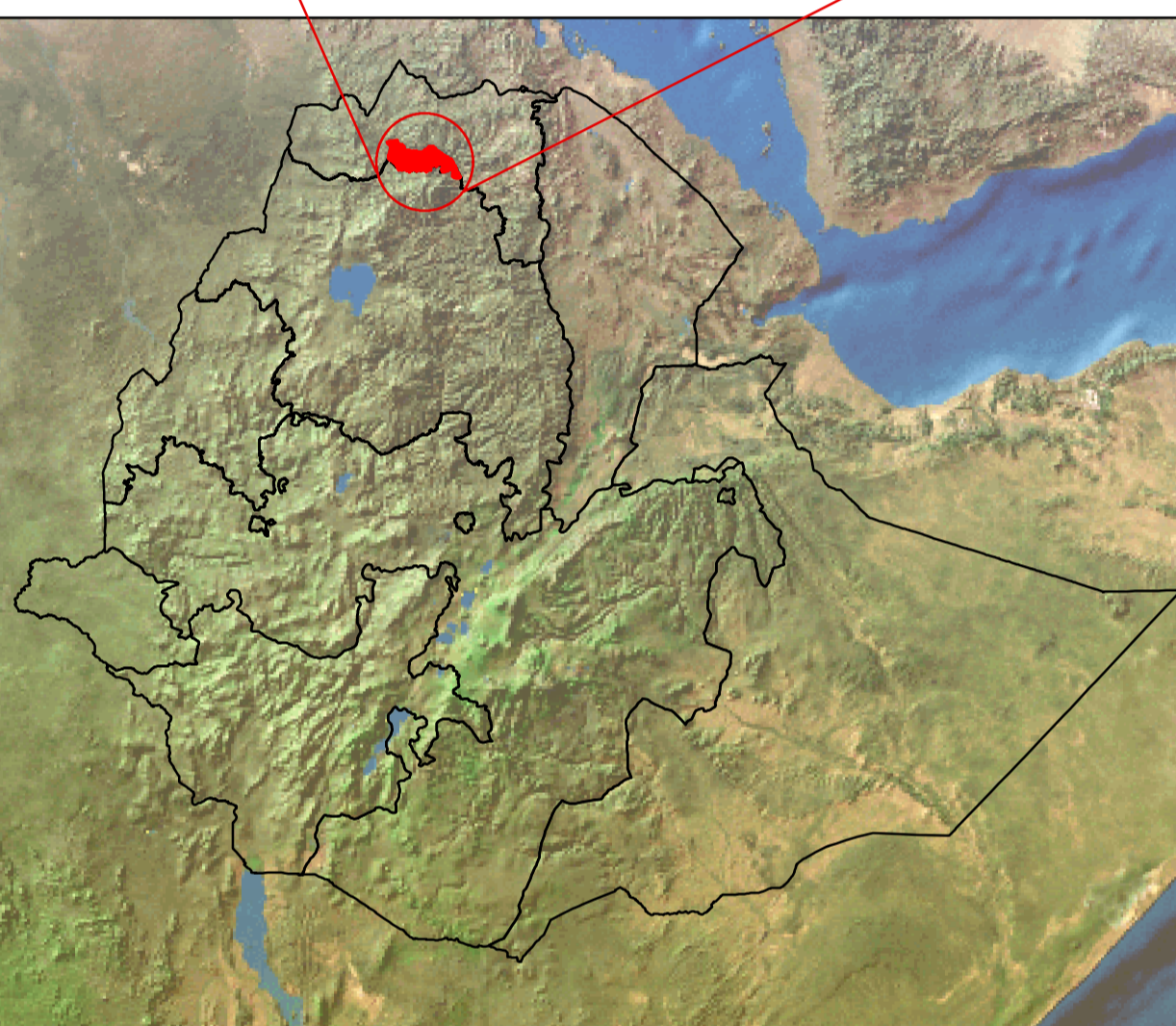
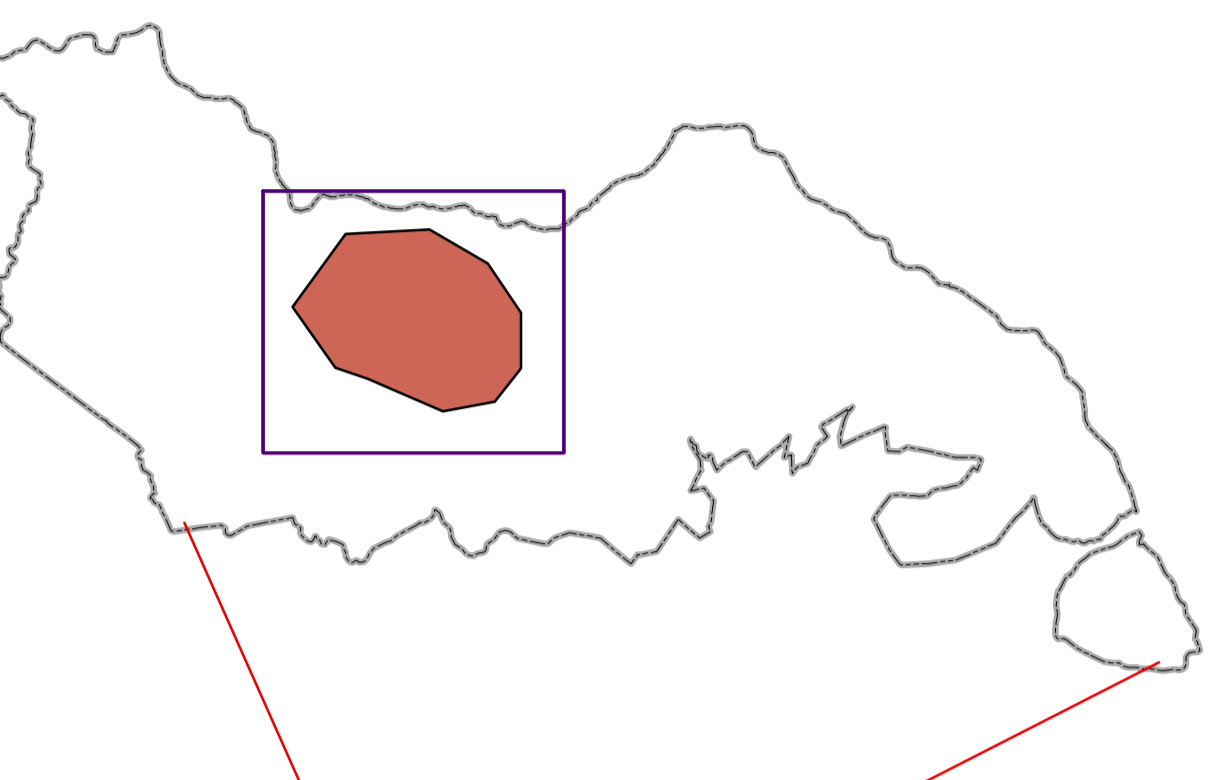


GEOLOGICAL MAP OF TARGET AREA-II WITHIN TSELEMT WOREDA

INSET MAPS

Legend

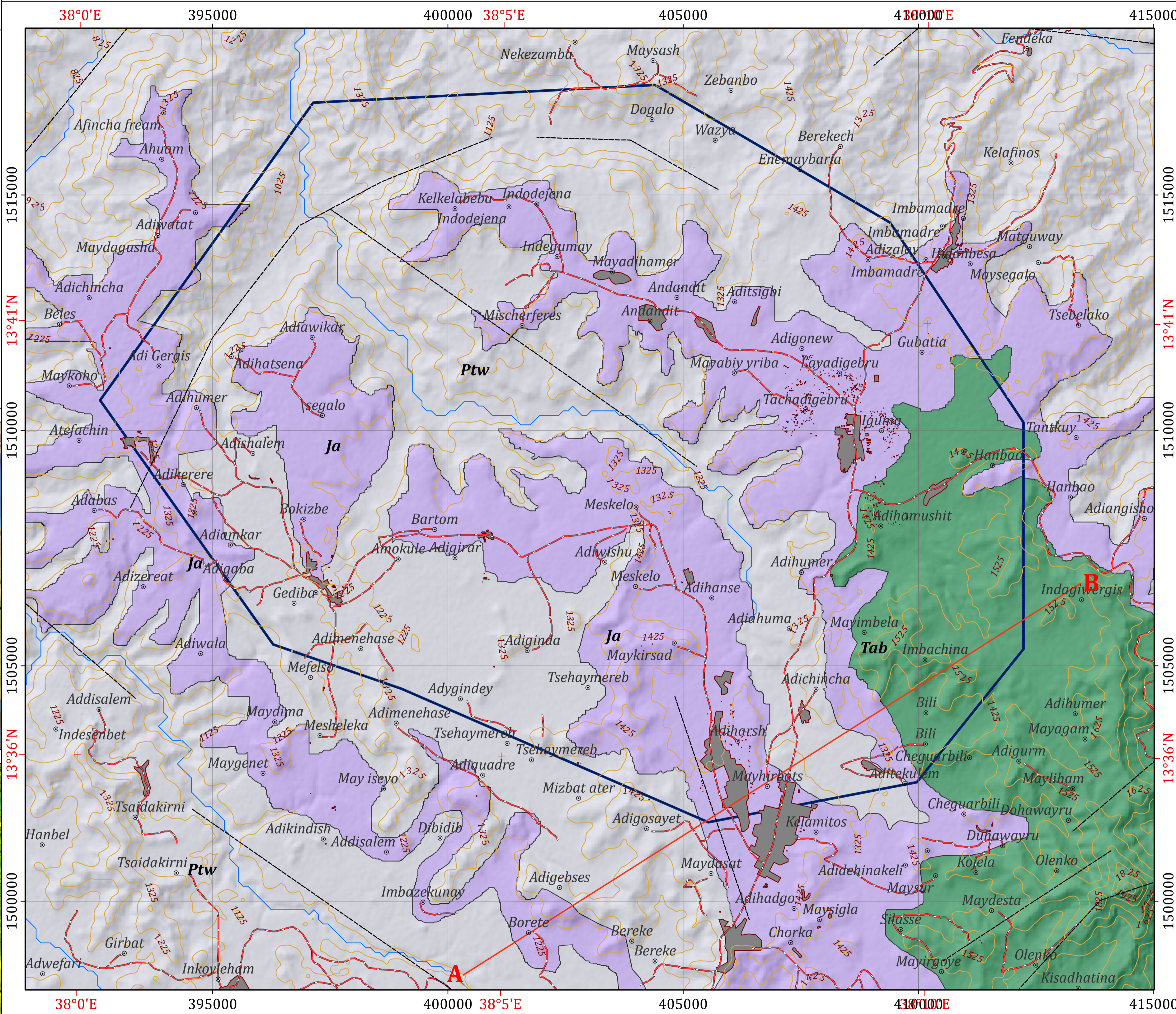
- Mapping area
- Tselemt woreda
- Target area-II



- Elevation (m.a.s.l.)**
- 1306 - 1554
 - 1802 - 2050
 - 1554 - 1802
 - 1058 - 1306
 - 810 - 1058

Disclaimer:

Administrative boundaries: CSA 2007
Built-up areas: Sentinel-2, Openstreetmap 2021



Legend

LITHOSTRATIGRAPHIC UNITS

- Tab** Ashange basalt: Alkaline and transitional basaltic flows and associated tuffs (Eocene-Oligocene)
- Ja** Adigrat sandstone: Sandstone, locally cross bedded, subordinate siltstone and shale
- Ptw** Werii Slate: Black to purplish slate with calcareous intercalations

GEOLOGICAL STRUCTURES

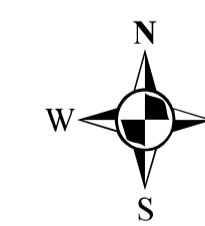
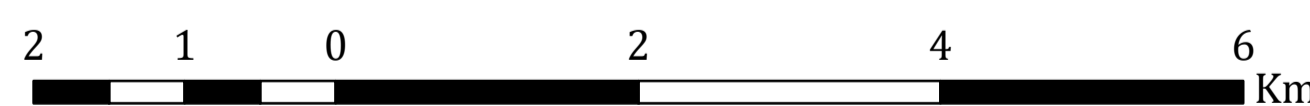
- Lineament

OTHER SYMBOLS

- Locality
- Contour Line (25 m Interval)
- Drainage
- Main Road
- Cross Section Line
- Target Area-II
- Built-up Area

Horizontal Datum: WGS 1984
Vertical Datum: Mean sea level
Projection: Universal Transverse Mercator, Zone 37N

Scale: 1:50,000



HYDROGEOLOGICAL MAPPING FOR CLIMATE RESILIENT WASH IN ETHIOPIA - LOT-1



Map production : Dr. Tarekegn T.& Dr. Yohannes D.
Cartography:- Assaminew G.

February, 2022

