


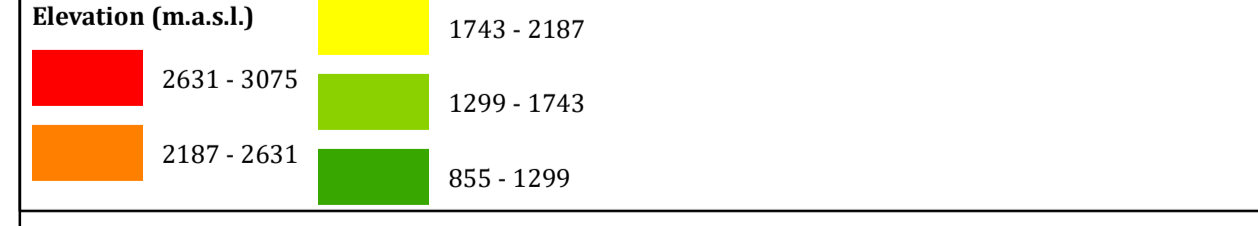
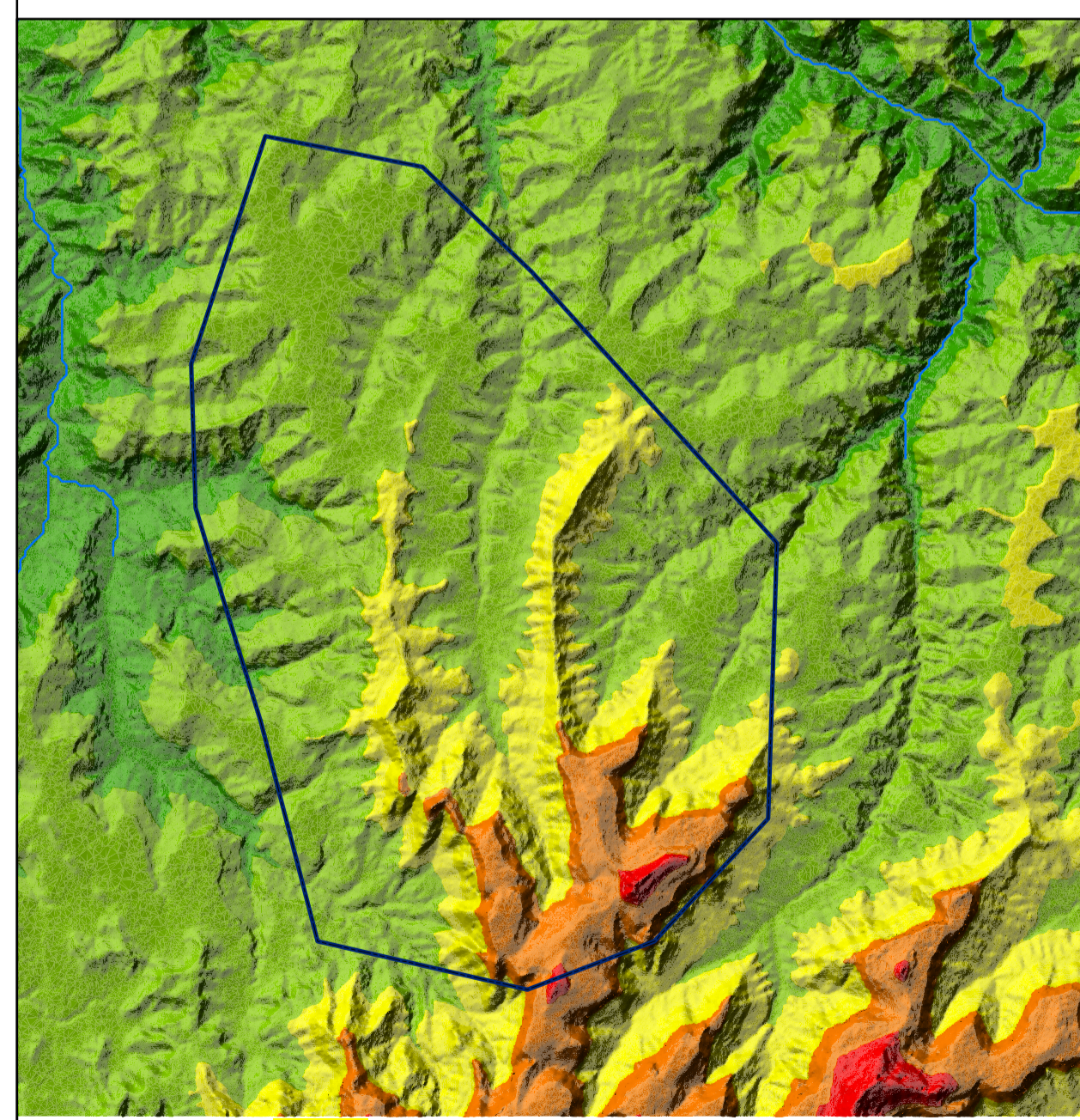
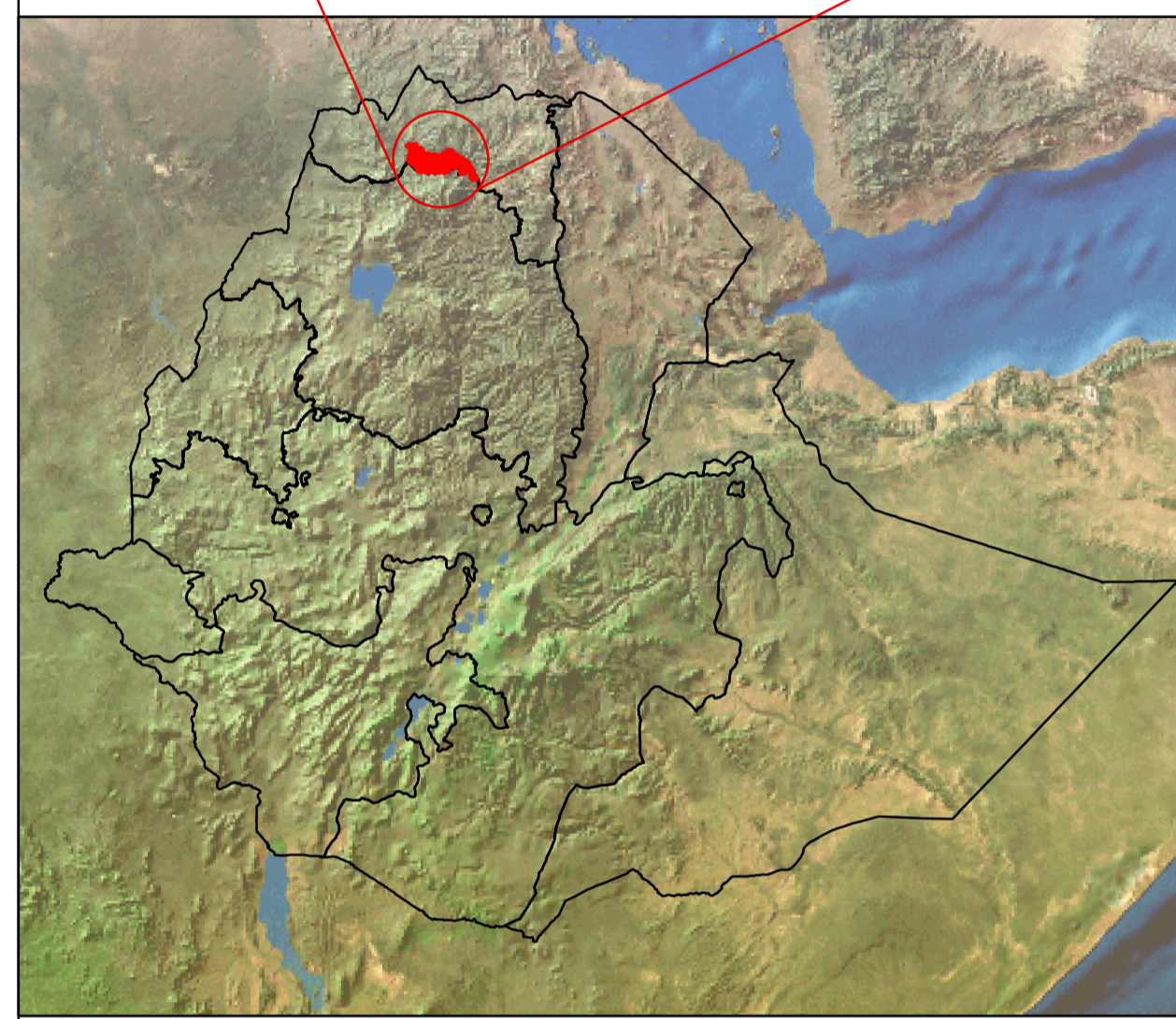
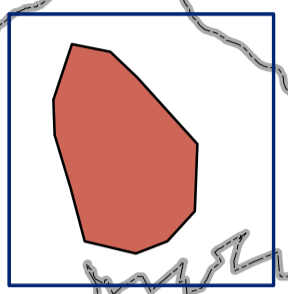


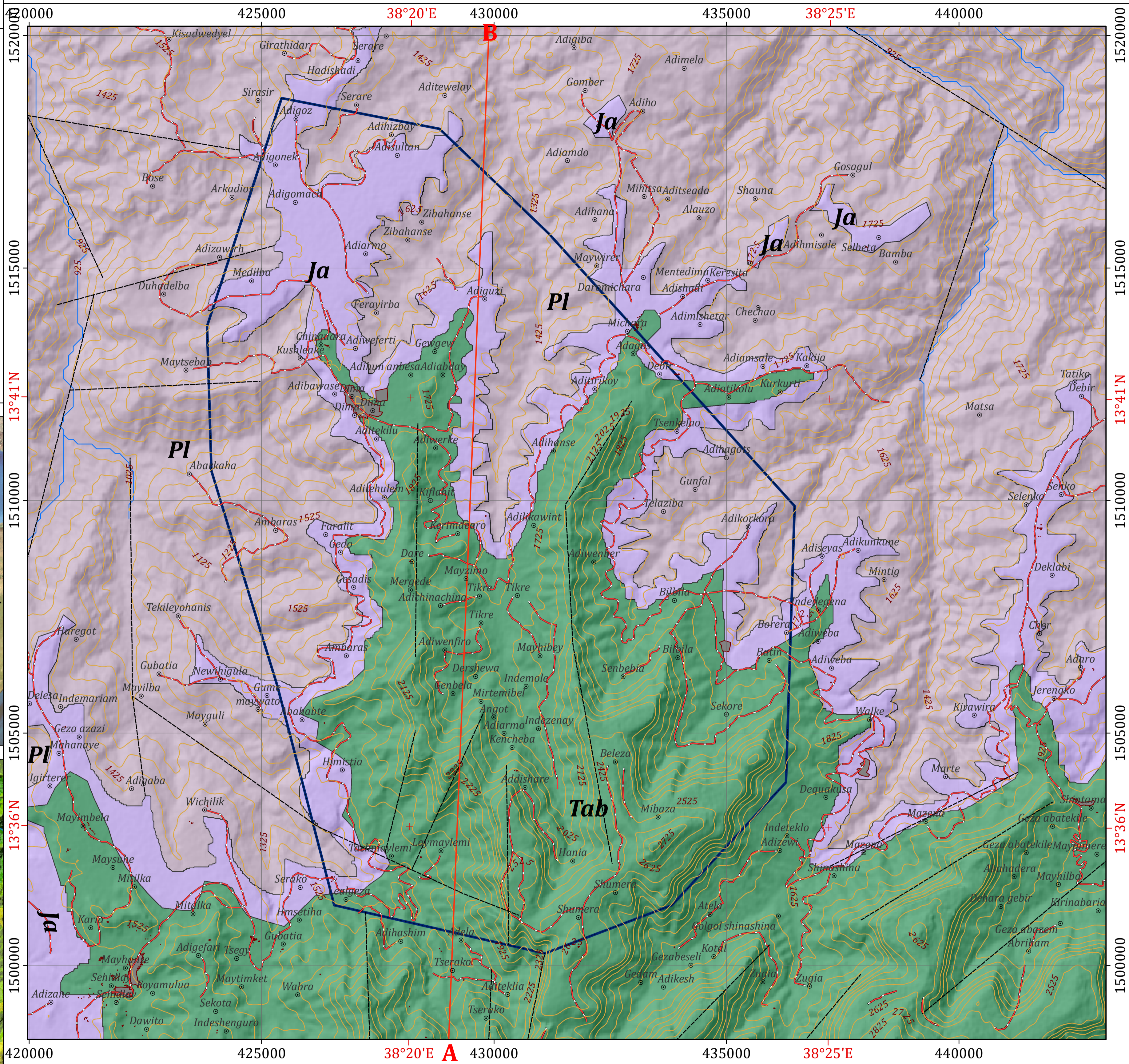
**INSET MAPS**

**Legend**

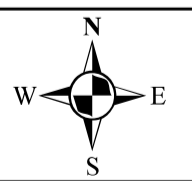
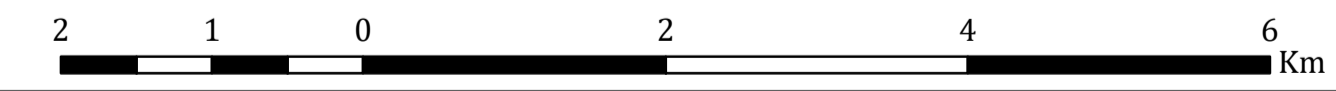
-  Tselemt woreda
-  Target area-I
-  Mapping area



**GEOLOGICAL MAP OF TARGET AREA-I WITHIN TSELEMT WOREDA**


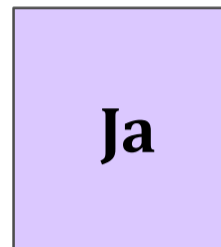
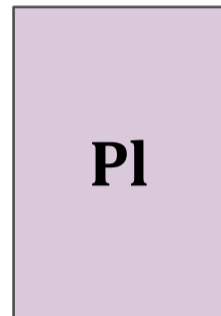


Horizontal Datum: WGS 1984  
 Vertical Datum: Mean sea level  
 Projection: Universal Transverse Mercator, Zone 37N  
 Scale: 1:50,000



**Legend**







**LITHOSTRATIGRAPHIC UNITS**

-  **Tab** Ashange basalt: Alkaline and transitional basaltic flows and associated tuffs (Eocene-Oligocene)
-  **Ja** Adigrat sandstone: Sandstone, locally cross bedded, subordinate siltstone and shale
-  **Pl** Tsali Group: Basic to intermediate metavolcanics interlayered with agglomerate volcanoclastic metasediment

**GEOLOGICAL STRUCTURES**

-  Lineament

**OTHER SYMBOLS**

-  Locality
-  Contour Line (25 m Interval)
-  Drainage
-  Main Road
-  Cross Section Line
-  Target Area-I

**HYDROGEOLOGICAL MAPPING FOR CLIMATE RESILIENT WASH IN ETHIOPIA - LOT-1**



**Disclaimer:**

Administrative boundaries: CSA 2007  
 Built-up areas: Sentinel-2, Openstreetmap 2021

