

INSET MAPS

GEOLOGICAL MAP OF TARGET AREA-II WITHIN SAESI TSADAMBA WOREDA

Legend

LITHOSTRATIGRAPHIC UNITS

- Pzte** Paleozoic Sediments: Edaga Arbi glacials and Enticho sandstone (undifferentiated)
- Pd** Didikema Formation: Dolomite interbedded with slate
- Pta** Arequa Formation (Tambain Group): Undifferentiated slate, phyllite, calcareous sediments with limestone
- Pm** Matheos Formation: Well bedded detrital limestone
- Pl** Tsaliet Group: Intermediate and basic lavas, grey wack, tuffaceous slate, phyllite, agglomerate, rhyolite

GEOLOGICAL STRUCTURES

- Normal fault
- - - Lineament
- ▲ Trust Fault
- ↕ Syncline
- ⤴ Overturned anticline
- ⤵ Overturned syncline

OTHER SYMBOLS

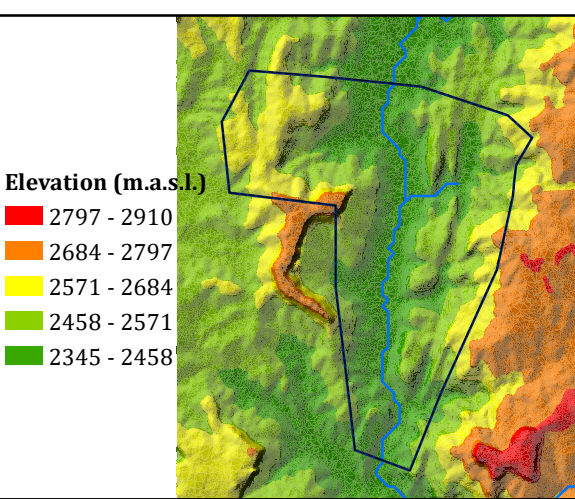
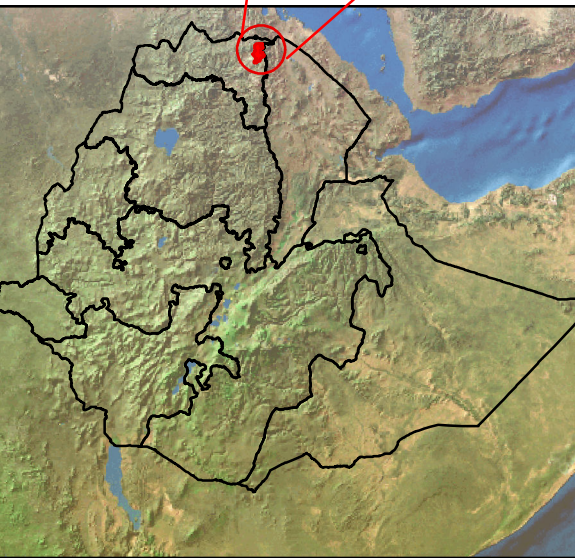
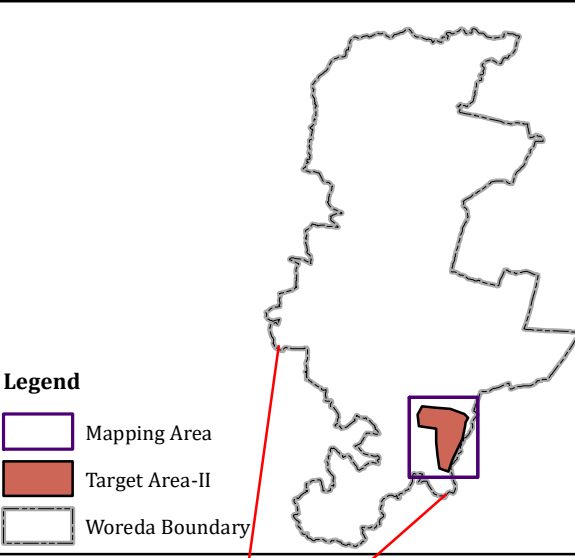
- ⊙ Locality
- ~ Contour Line (25 m Interval)
- ~ Drainage
- ↗ Main Road
- A-B Cross Section Line
- Target Area-II
- Built-up Area

HYDROGEOLOGICAL MAPPING FOR CLIMATE RESILIENT WASH IN ETHIOPIA - LOT-1

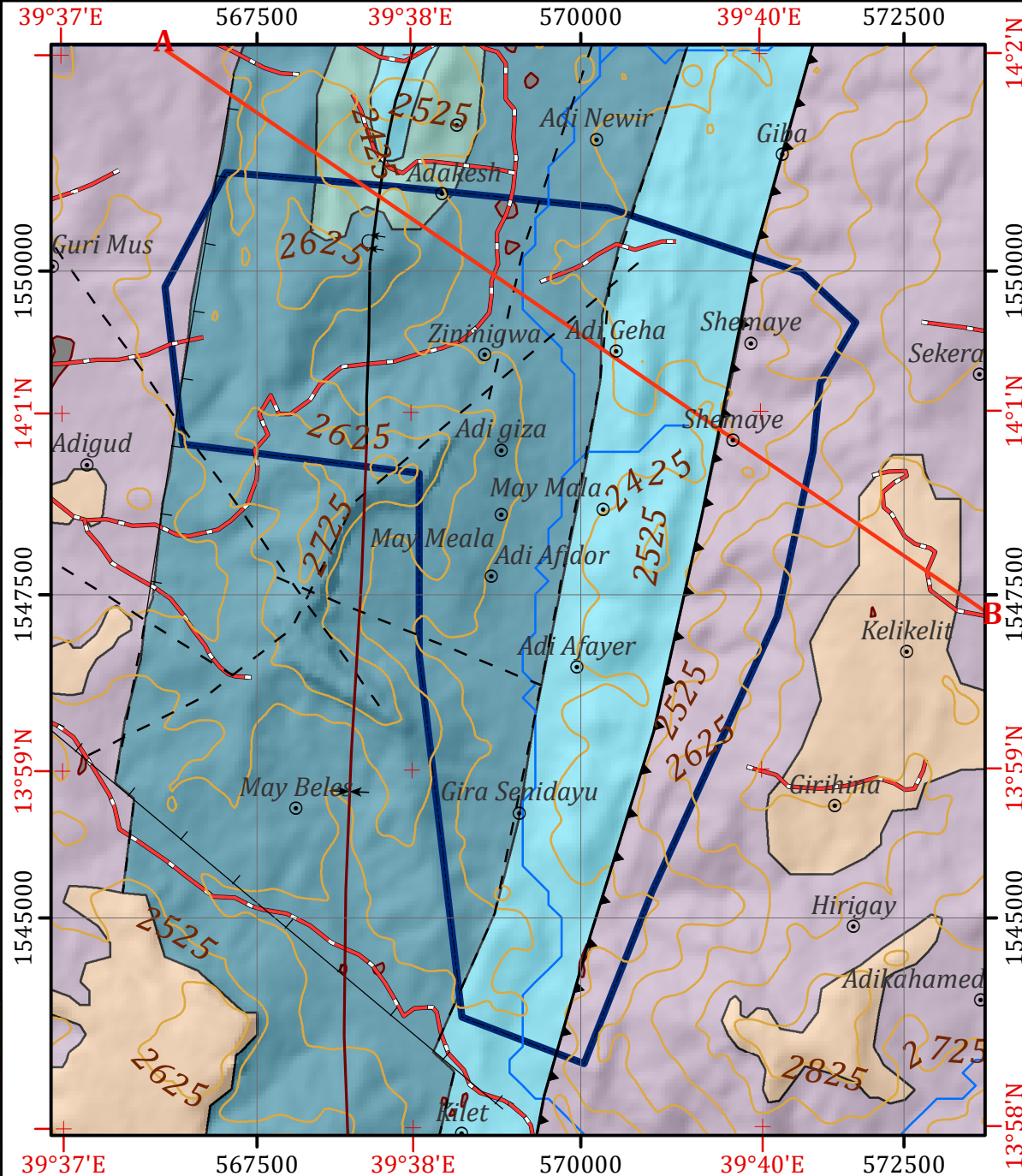


Map production : Dr. Tarekegn T.& Dr. Yohannes D.
Cartography:- Assaminew G. February, 2022

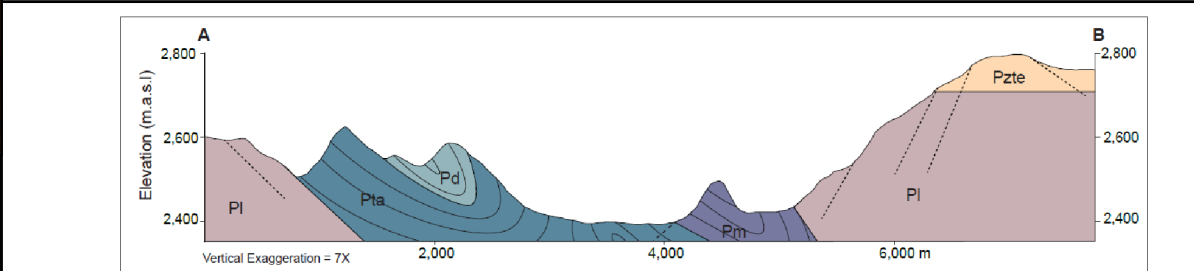
- Legend**
- Mapping Area
 - Target Area-II
 - Woreda Boundary



- Elevation (m.a.s.l.)**
- 2797 - 2910
 - 2684 - 2797
 - 2571 - 2684
 - 2458 - 2571
 - 2345 - 2458



Horizontal Datum: WGS 1984
Vertical Datum: Mean sea level
Projection: Universal Transverse Mercator, Zone 37N
Scale: 1:50,000



Disclaimer:
Administrative boundaries: CSA 2007
Built-up areas: Sentinel-2, Openstreetmap 2021