


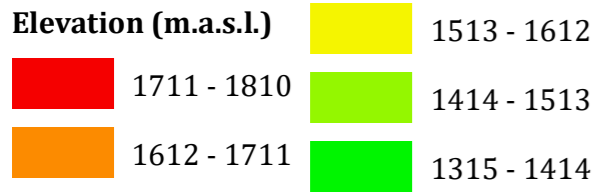
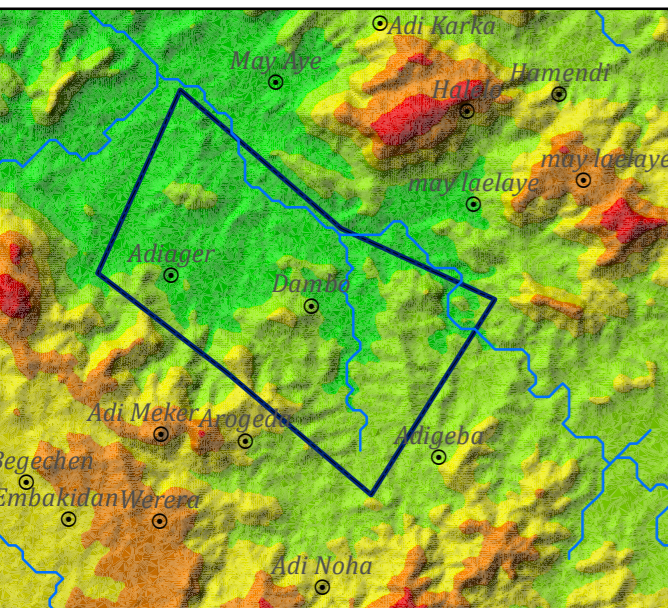
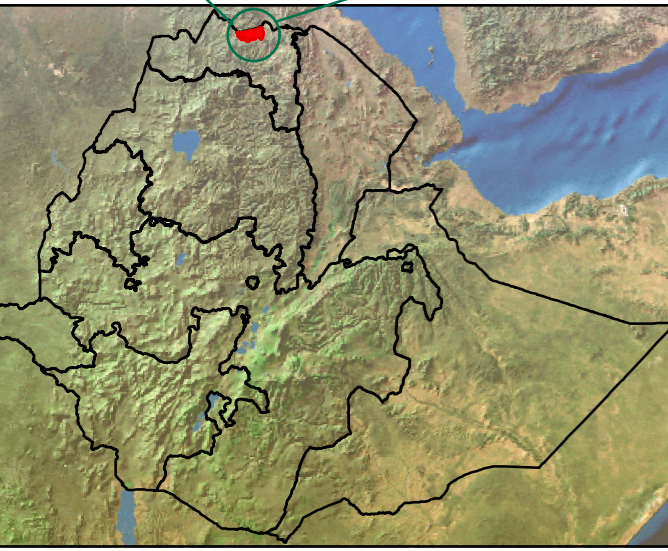
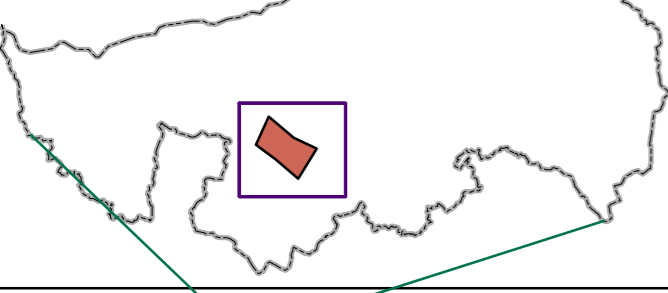


INSET MAPS

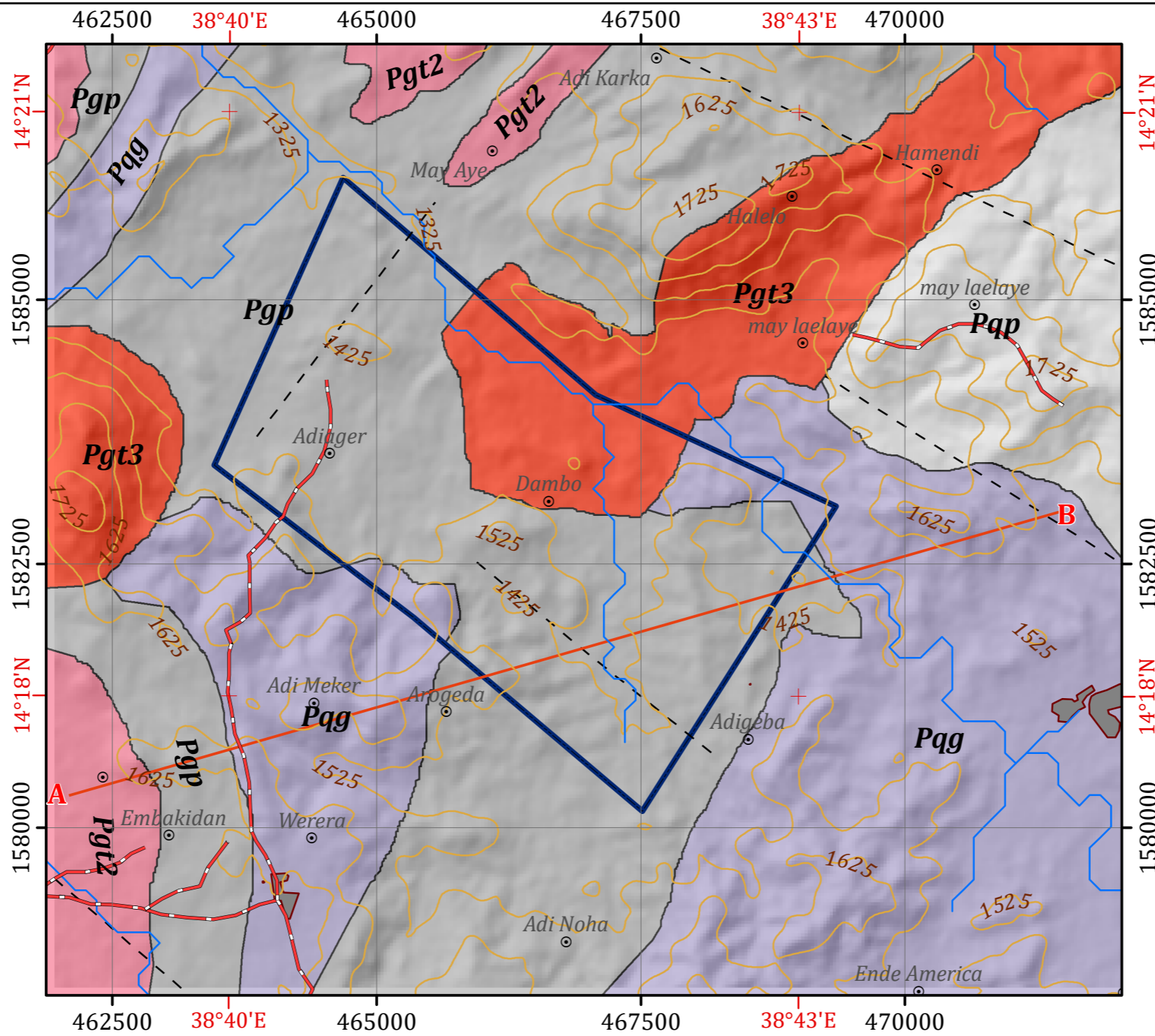
Legend

-  Target Area-II
-  Mapping area
-  Mereb Leha woreda



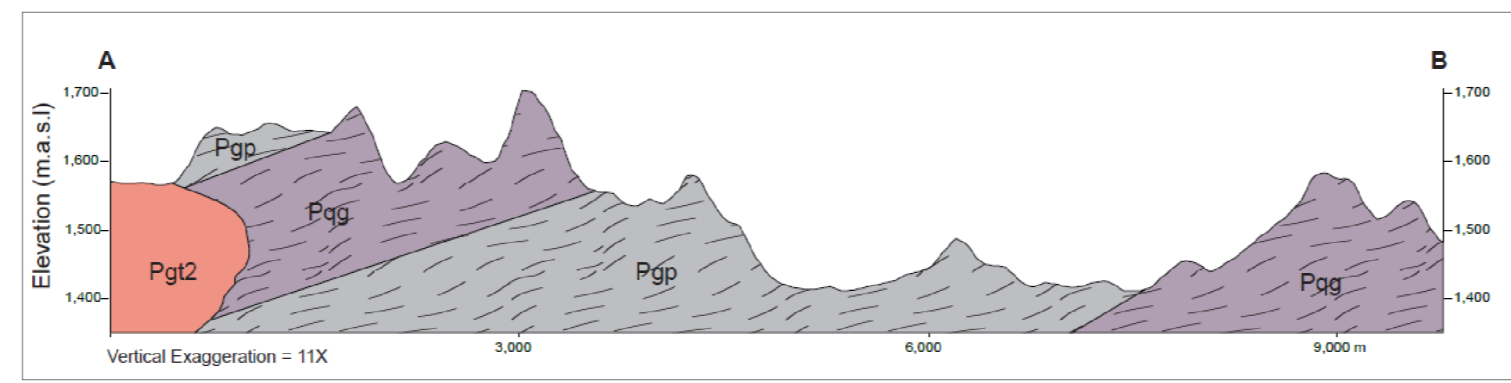
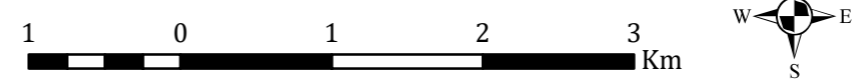
Disclaimer:
 Administrative boundaries: CSA 2007
 Built-up areas: Sentinel-2, Openstreetmap 2021

GEOLOGICAL MAP OF TARGET AREA-II WITHIN MEREB LEHA WOREDA



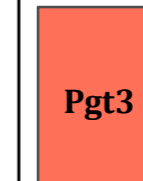
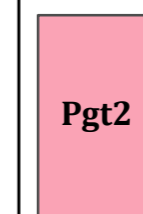

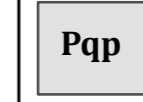
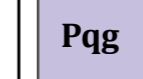
Horizontal Datum: WGS 1984
 Vertical Datum: Mean sea level
 Projection: Universal Transverse Mercator, Zone 37N

Scale: 1:50,000



Legend








LITHOSTRATIGRAPHIC UNITS

-  **Pgt3** Post-tectonic granite: Coarse grained, pink biotite granitoid hornblend biotite granite, commonly contains lathic of large potassium
-  **Pgt2** Syn-tectonic granite: granitoid coarse grained xenolithic granodiorite, diorite, tonolite and ganite. Distinct marginal foliation and zone of hybridization is characterstic.
-  **Pgp** Graphitic phyllite and graphitic quartzite
-  **Pqp** Quartzite, phyllite and graphitic schist
-  **Pqg** Graphitic quartzite

GEOLOGICAL STRUCTURES

-  Lineament

OTHER SYMBOLS

-  Locality
-  Contour Line (25 m Interval)
-  Drainage
-  Main Road
-  Cross Section Line
-  Built-up Area
-  Target Area-II

HYDROGEOLOGICAL MAPPING FOR CLIMATE RESILIENT WASH IN ETHIOPIA - LOT-1



Map production : Dr. Tarekegn T.& Dr. Yohannes D.
 Cartography:- Assaminew G. February, 2022