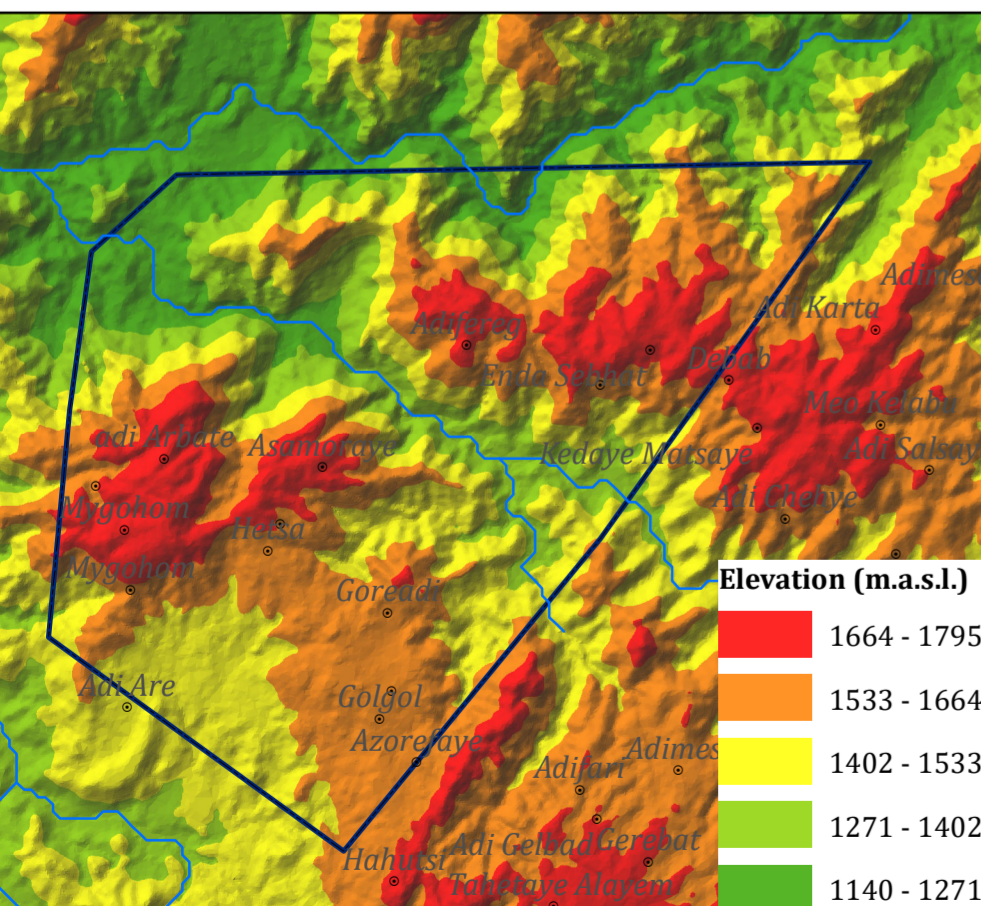
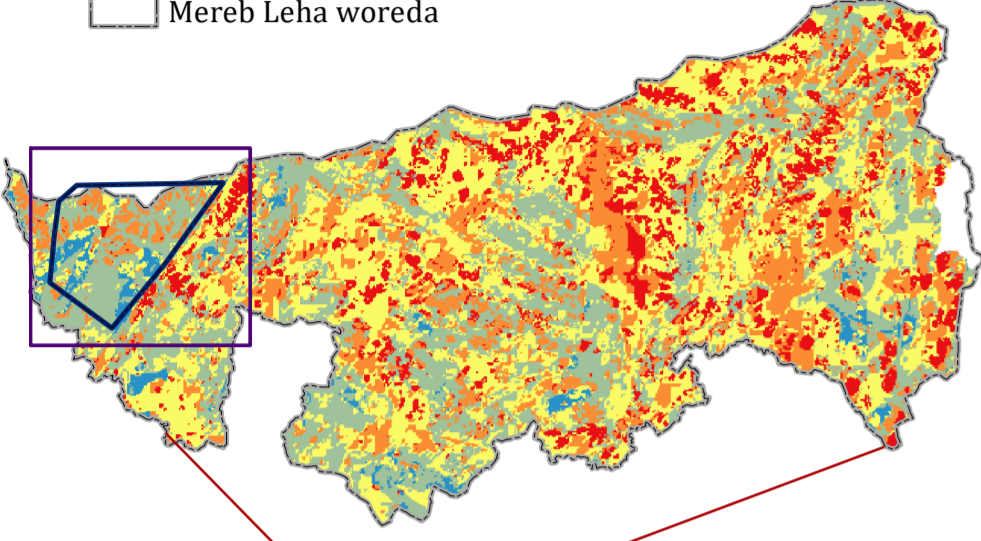


### INSET MAPS

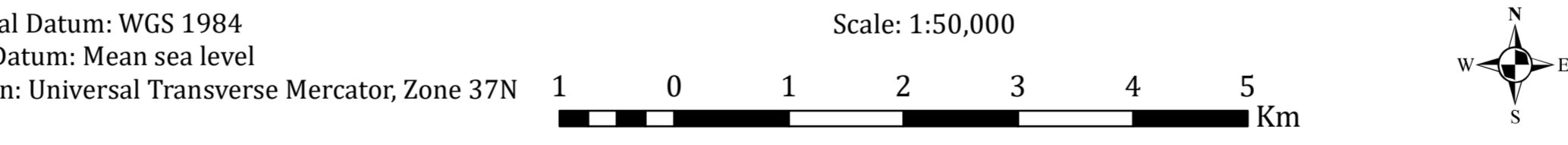
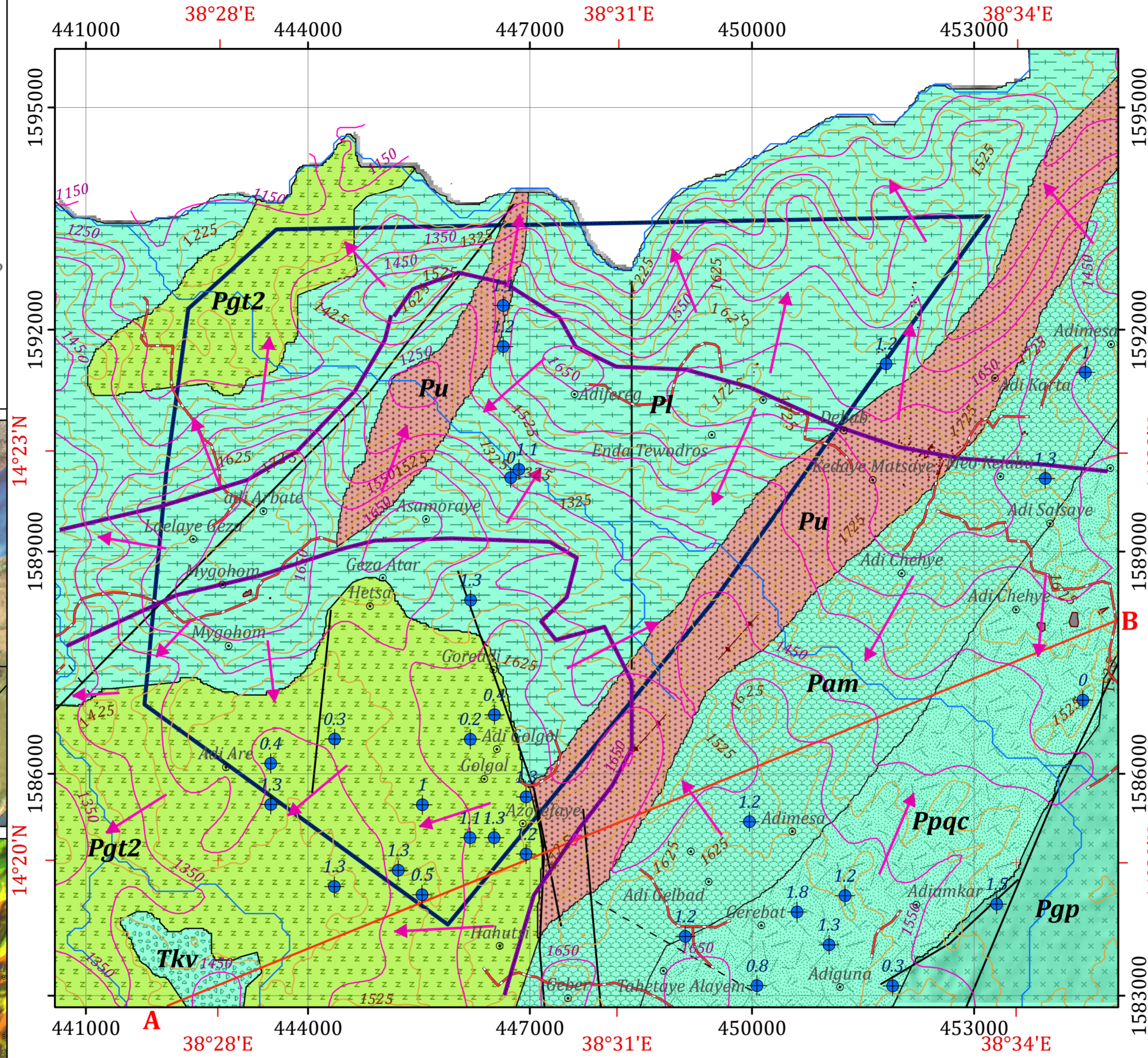
#### Groundwater Suitability Index

- Unsuitable
- Low
- High
- Very Low
- Moderate
- Target Area-I
- Mapping area
- Mereb Leha woreda



**Disclaimer:**  
 Administrative boundaries: CSA 2007  
 Built-up areas: Sentinel-2, Openstreetmap 2021

## HYDROGEOLOGICAL MAP OF TARGET AREA-I WITHIN MEREB LEHA WOREDA



### Legend

#### AQUIFER CLASSIFICATION

- Aquifer class-I: Moderately productive fissure (T = 1-10m<sup>2</sup>/d, Q = 0.5- 5 l/s)
- Aquifer class-II: Low productive fissured aquifers (T = 0.1-1m<sup>2</sup>/d, Q = 0.05-0.5 l/s)
- Aquitard

#### LITHOSTRATIGRAPHIC UNITS

- Scoriaceous basalt
- Syn-tectonic granitoid
- Amphibole schist with marble
- Phyllite and quartzite
- Graphitic phyllite
- Undifferentiated schists
- Metavolcanics

#### GEOLOGICAL STRUCTURES

- Normal fault
- Lineament
- Land form

#### OTHER SYMBOLS

- Locality
- Borehole
- Yield (l/s)
- Contour Line (25 m Interval)
- Drainage
- Main Road
- Cross Section Line
- Built-up Area
- Flow Direction
- Target Area-I
- Groundwater Contour
- GW Divide

### HYDROGEOLOGICAL MAPPING FOR CLIMATE RESILIENT WASH IN ETHIOPIA - LOT-1



Hydrogeological map production : Dr. Dessie N. & Shiferaw L.  
 Geological map production : Dr. Tarekegn T. & Dr. Yohannes D.  
 Cartography:- Assaminew G.

February, 2022