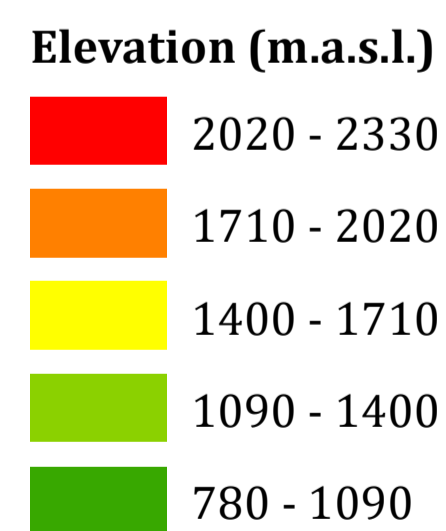
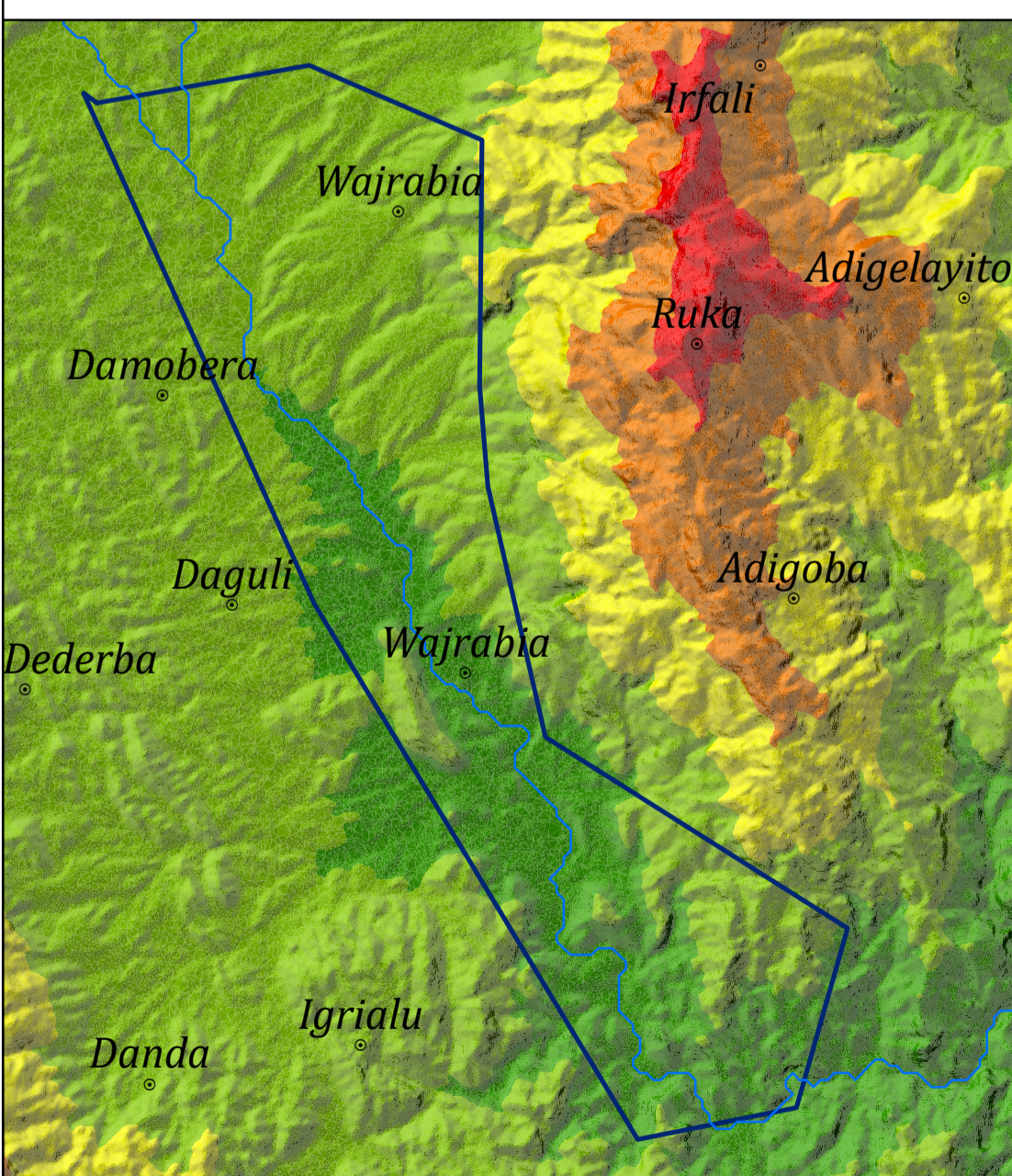
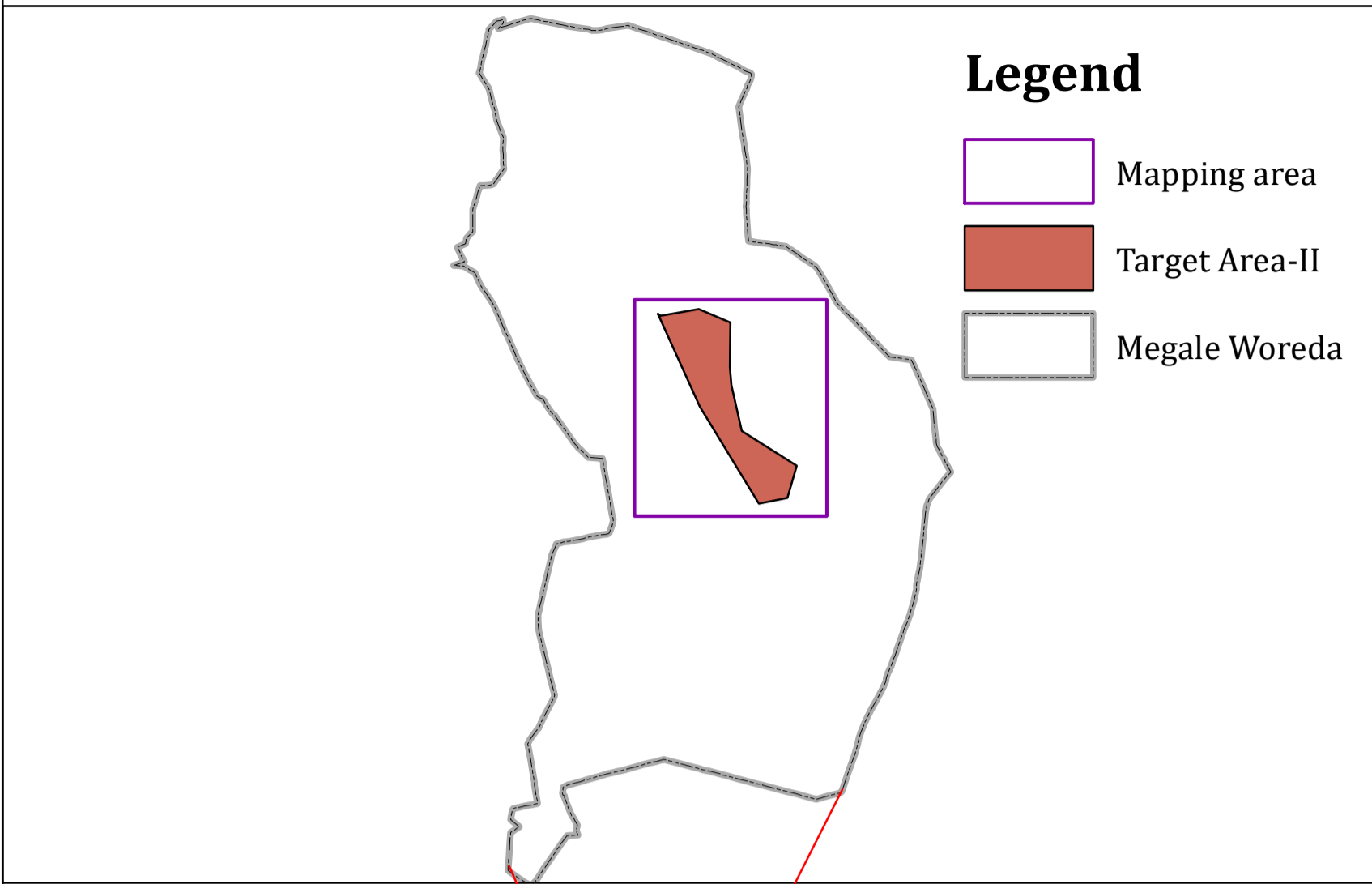
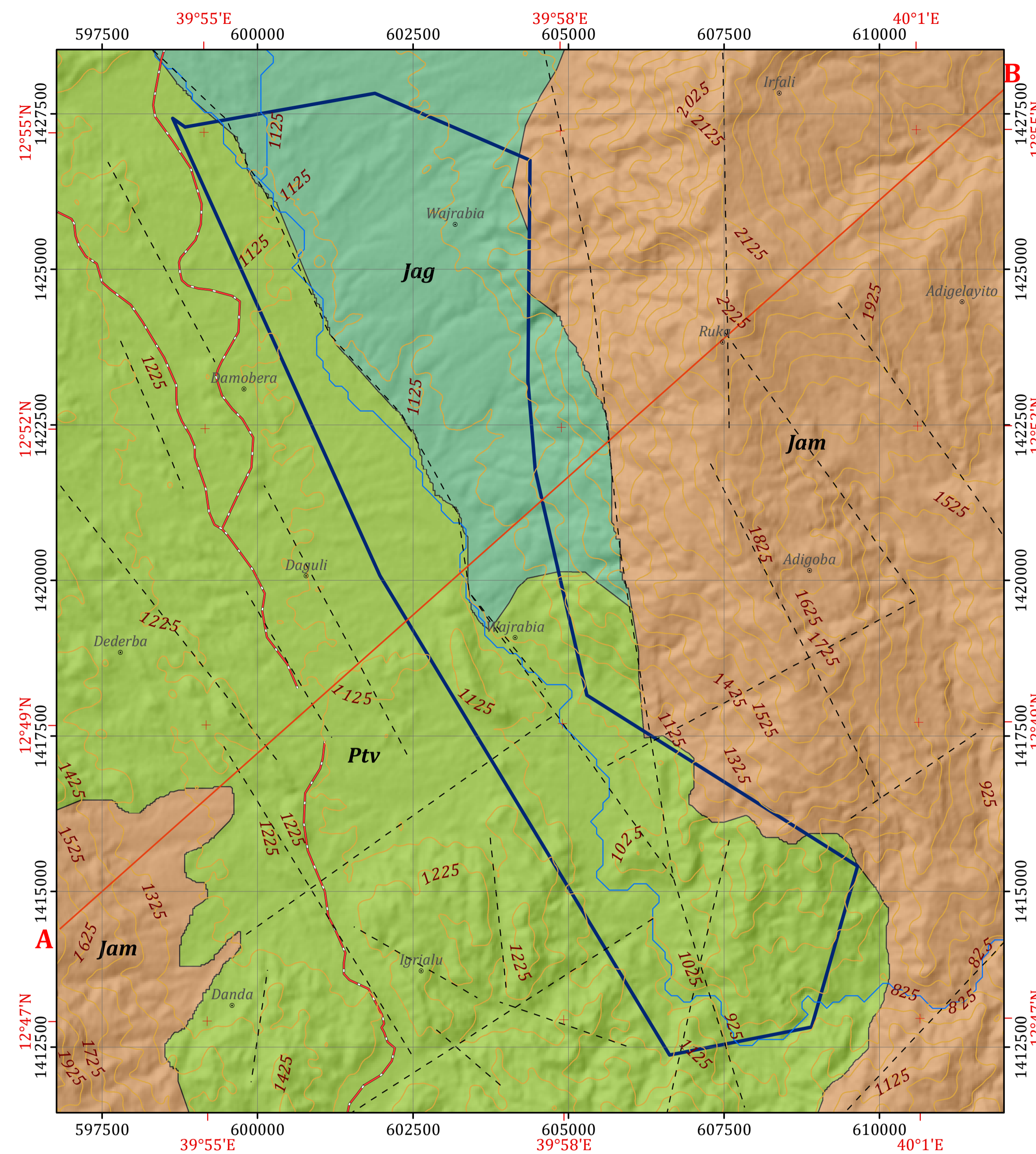


INSET MAPS



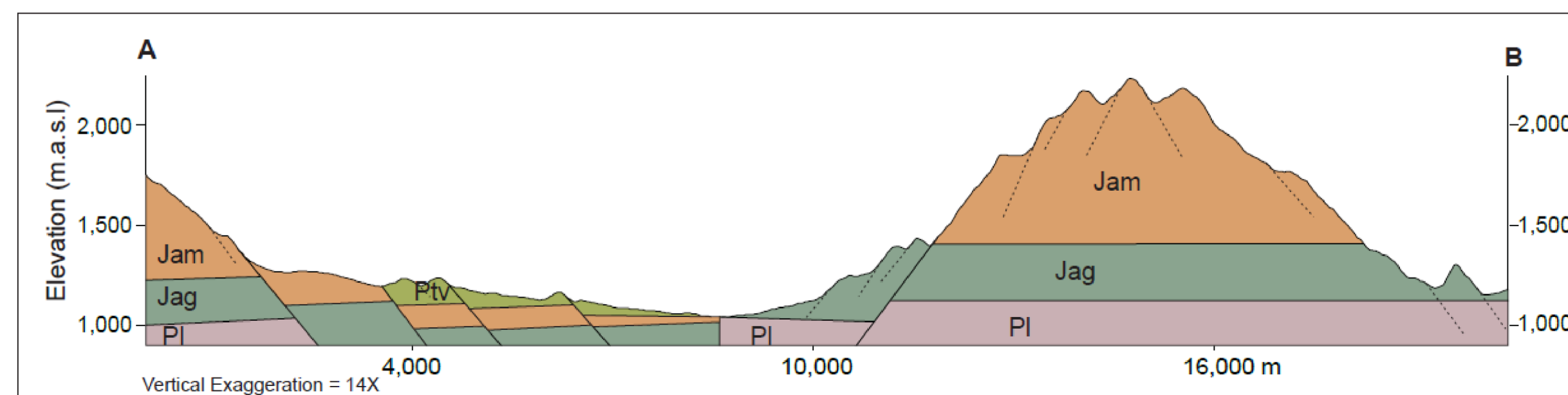
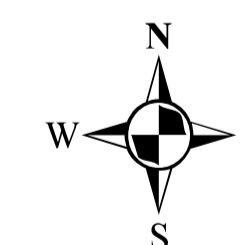
Disclaimer:
 Administrative boundaries: CSA 2007
 Built-up areas: Sentinel-2, Openstreetmap 2021

GEOLOGICAL MAP OF TARGET AREA-II WITHIN MEGALE WOREDA



Horizontal Datum: WGS 1984
 Vertical Datum: Mean sea level
 Projection: Universal Transverse Mercator, Zone 37N

Scale: 1:50,000



Legend

LITHOSTRATIGRAPHIC UNITS

- **Ptv** Transverse volcanics: Basaltic lava flows of mostly doleritic or porphyritic olivine basalt
- **Jam** Ambaradam sandstone: Clay, silt, sandstone, pebble conglomerate, and silty clay stone, lateritized in places
- **Jag** Agula shale: Finely crystalline limestone, marl, shale intercalated with sandstone

GEOLOGICAL STRUCTURES

- Lineament

OTHER SYMBOLS

- ⊙ Locality
- ~ Contour Line (25 m Interval)
- ~ Drainage
- ~ Main Road
- A-B Cross Section Line
- Target Area-II

HYDROGEOLOGICAL MAPPING FOR CLIMATE RESILIENT WASH IN ETHIOPIA - LOT-1



Map production : Dr. Tarekegn T.& Dr. Yohannes D.
 Cartography:- Assaminew G.

February, 2022