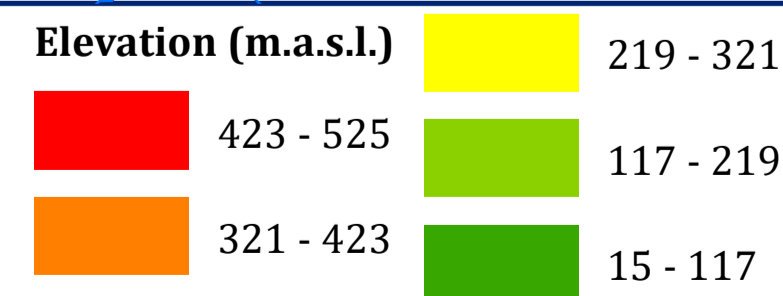
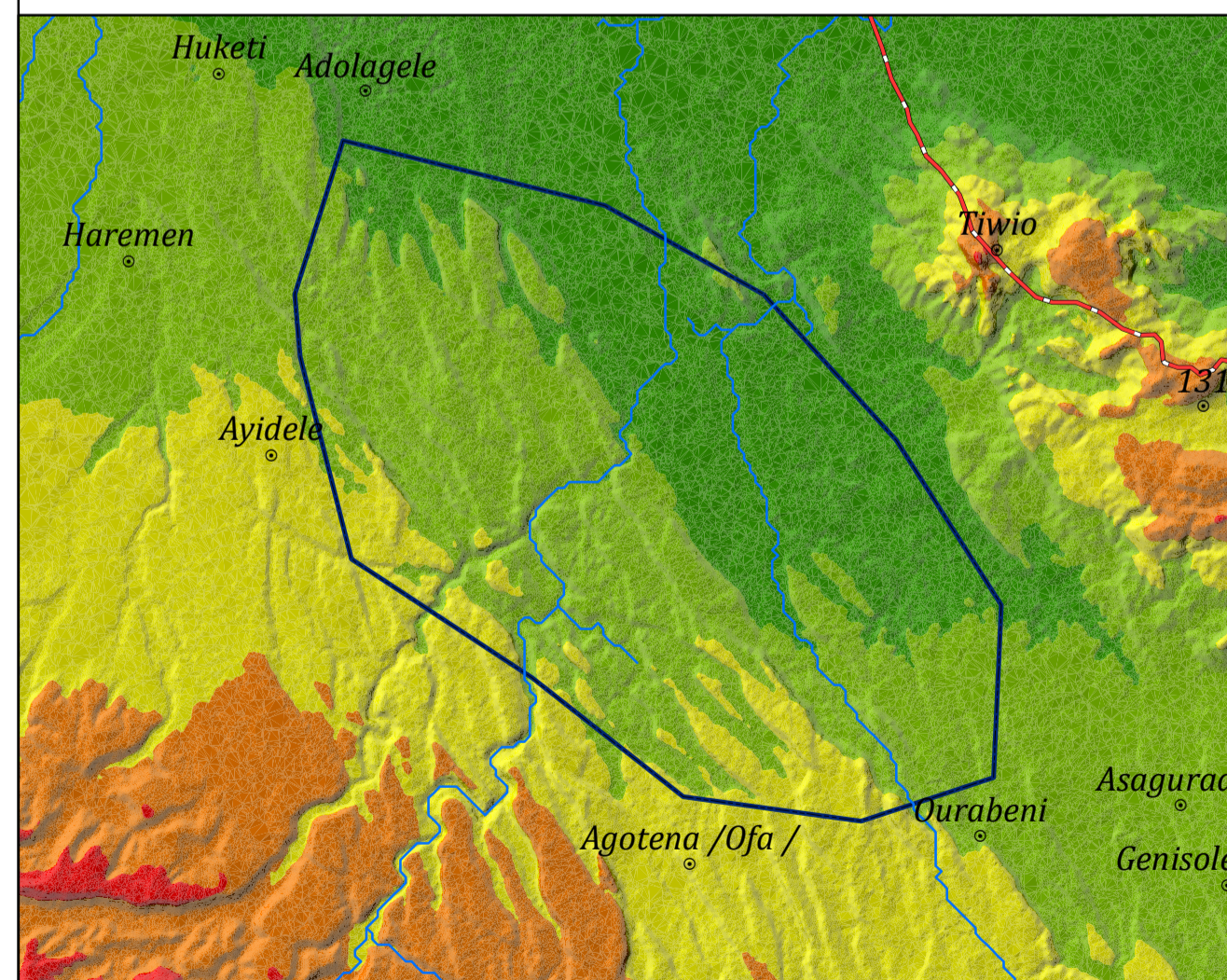
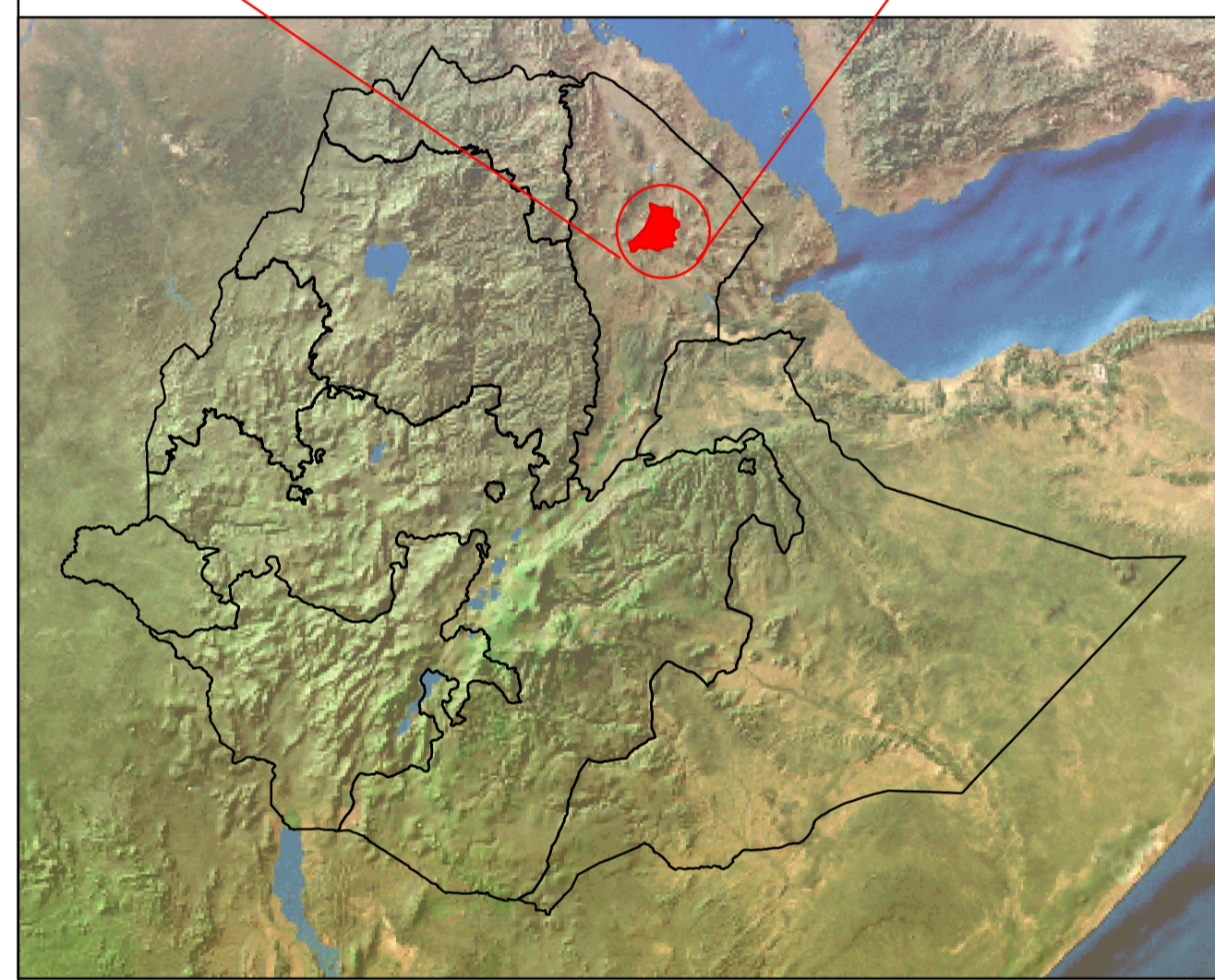
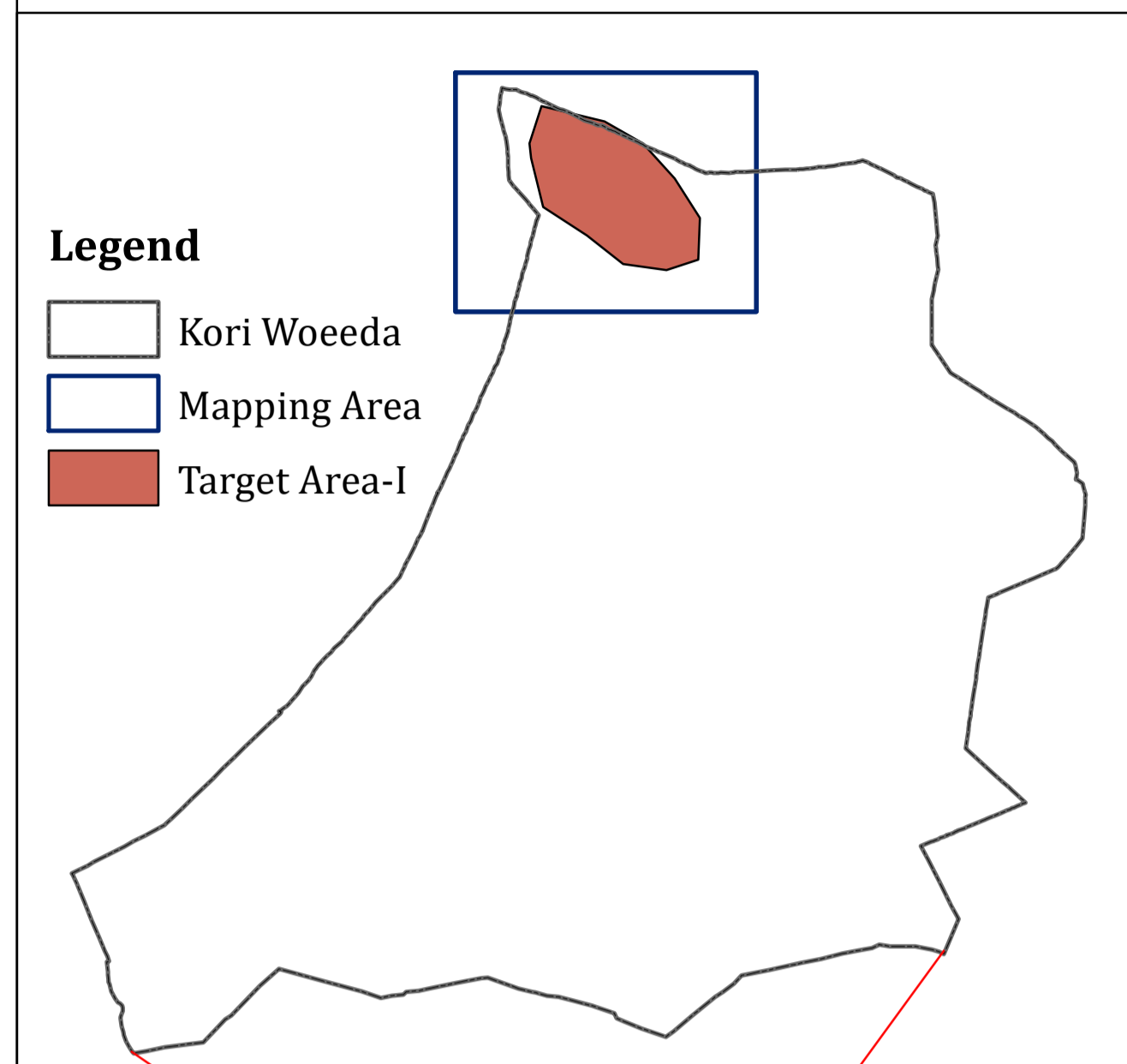
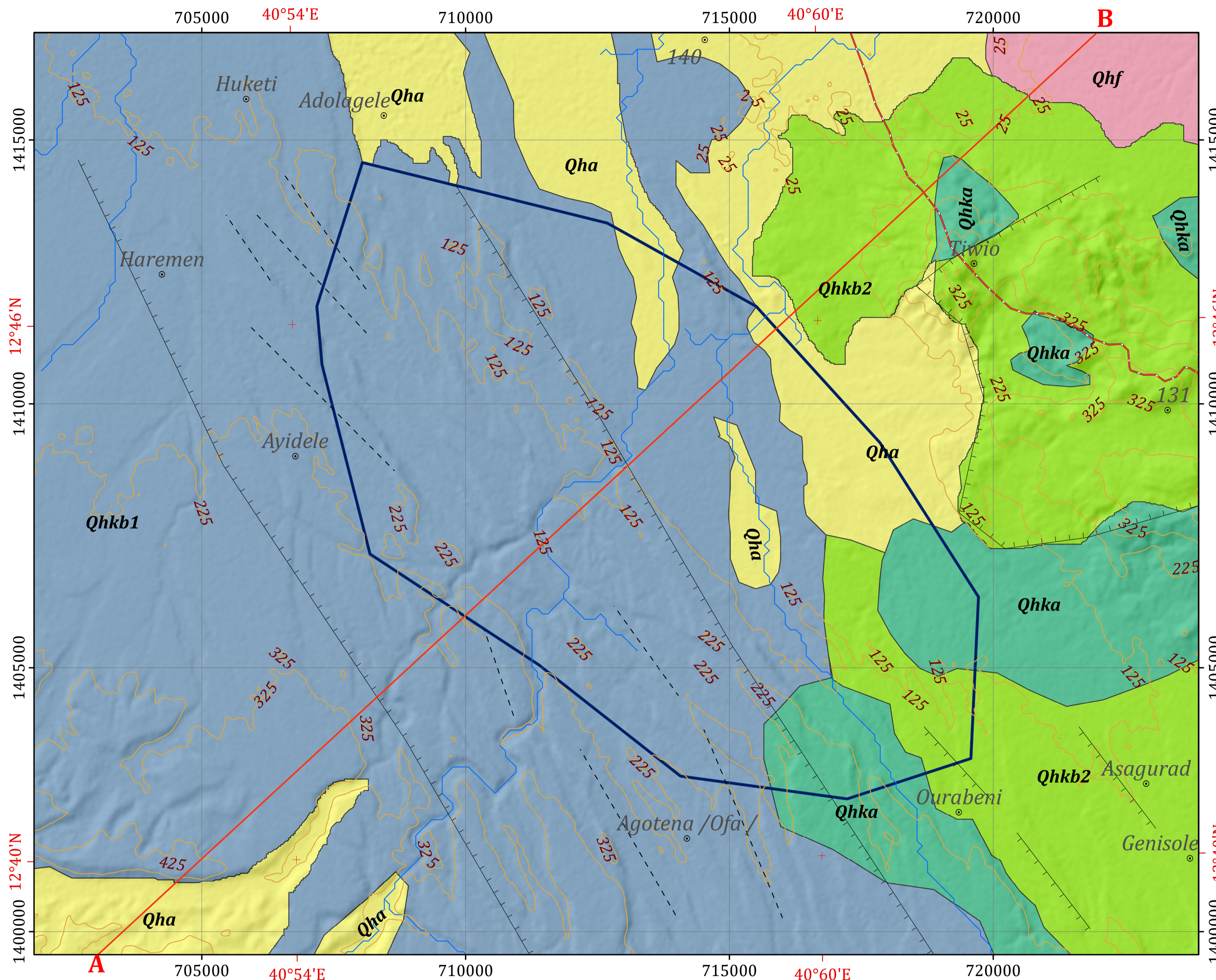


GEOLOGICAL MAP OF TARGET AREA-I WITHIN KORI WOREDA

INSET MAPS

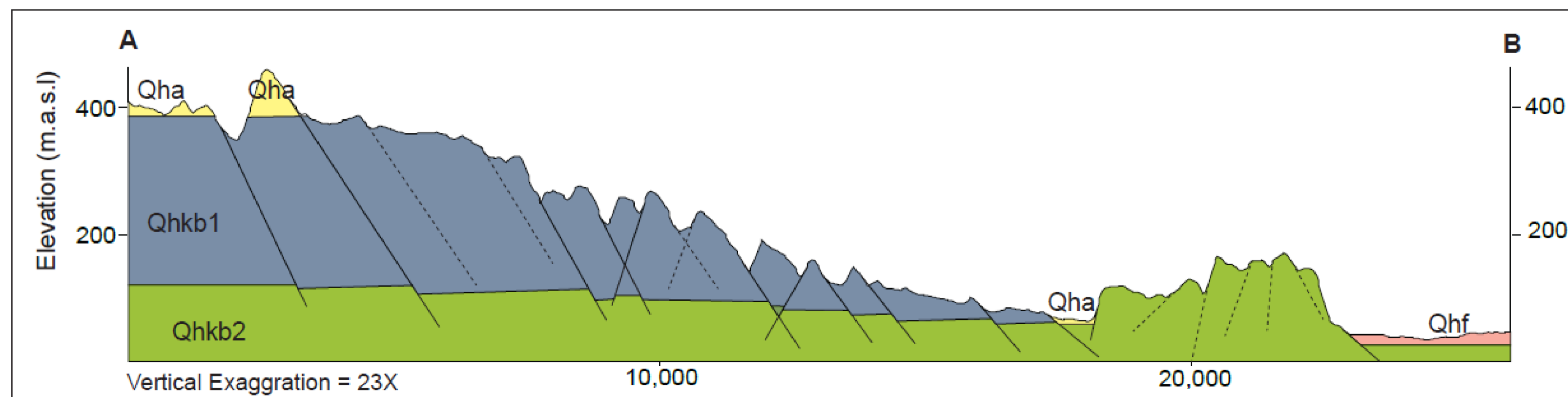
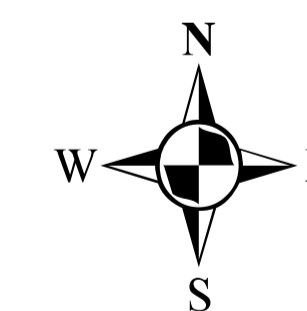


Disclaimer:
 Administrative boundaries: CSA 2007
 Built-up areas: Sentinel-2, Openstreetmap 2021



Horizontal Datum: WGS 1984
 Vertical Datum: Mean sea level
 Projection: Universal Transverse Mercator, Zone 37N

Scale: 1:50,000



Legend

LITHOSTRATIGRAPHIC UNITS

- Qha** Fluvial Sediments: Silt, sand and gravel
- Qhf** Afdera Sediment Beds: Gypsum with rare calcareous intercalation
- Qhka** Axial Volcanics: Fissure eruptions and shield volcanoes with basaltic flows and alkaline and per-alkaline silicic rocks (< 1Ma)
- Qhkb2** Upper Stratoid Series: Undifferentiated lavas, plug and cinder cones, consisting mainly basaltic subordinately intermediate and acidic rocks, partly of alkaline affinity
- Qhkb1** Lower Stratoid Series: Dominantly olivine basalt with intercalation of intermediate lava and tuff, which are partly of alkaline affinity, and some undifferentiated acidic rocks

GEOLOGICAL STRUCTURES

- Normal fault
- Lineament

OTHER SYMBOLS

- Locality
- Contour Line (25 m Interval)
- Drainage
- Main Road
- Cross Section Line
- Target Area-I

HYDROGEOLOGICAL MAPPING FOR CLIMATE RESILIENT WASH IN ETHIOPIA - LOT-1



Map production : Dr. Tarekegn T.& Dr. Yohannes D.
 Cartography:- Assaminew G.

February, 2022