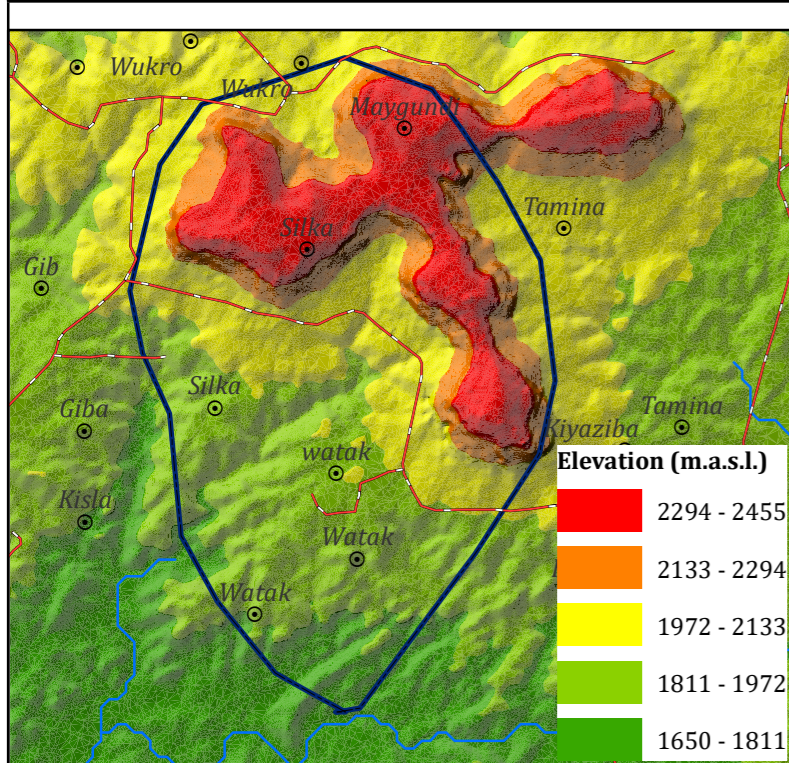
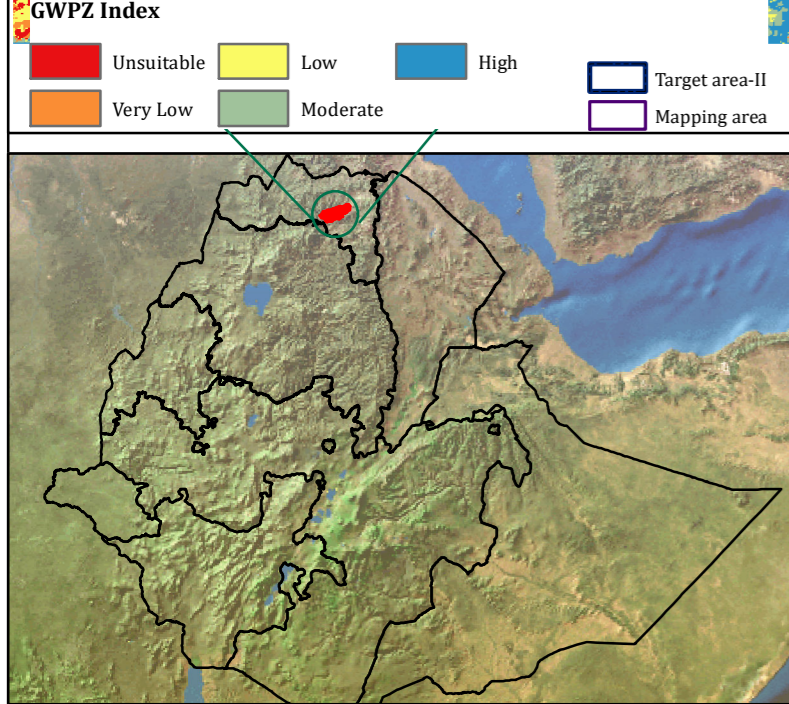
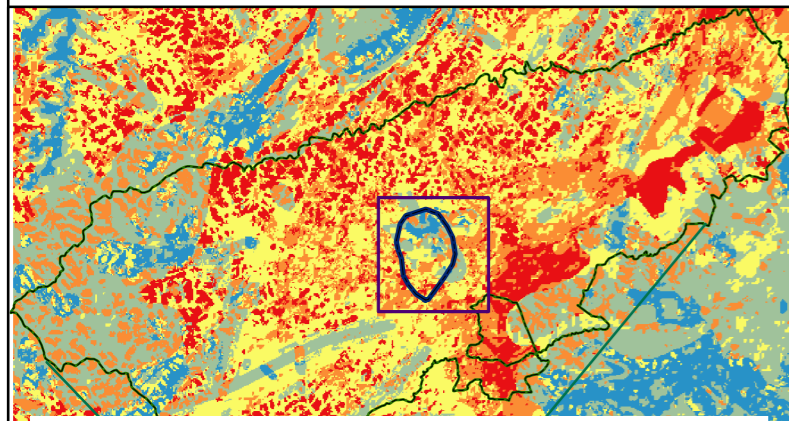


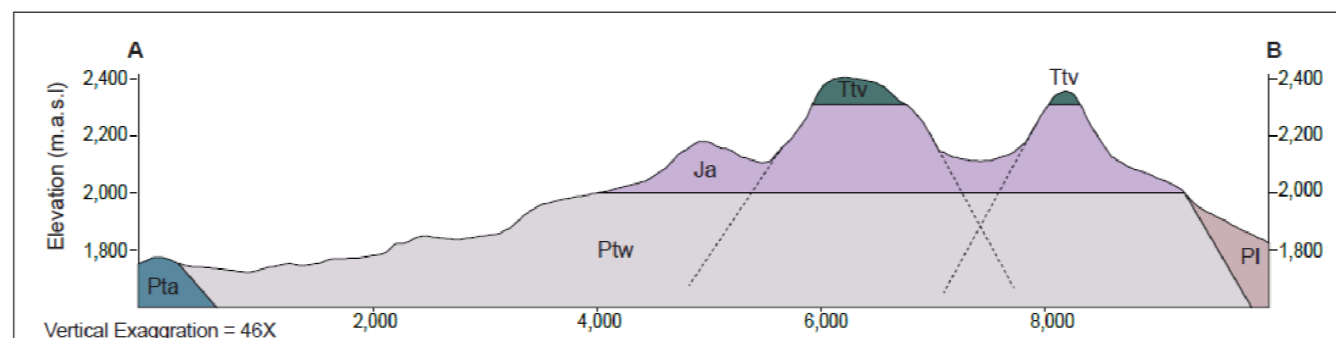
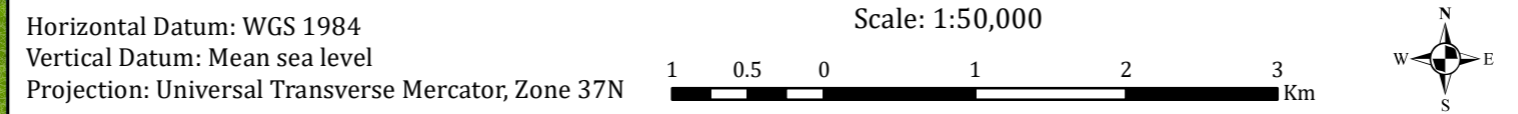
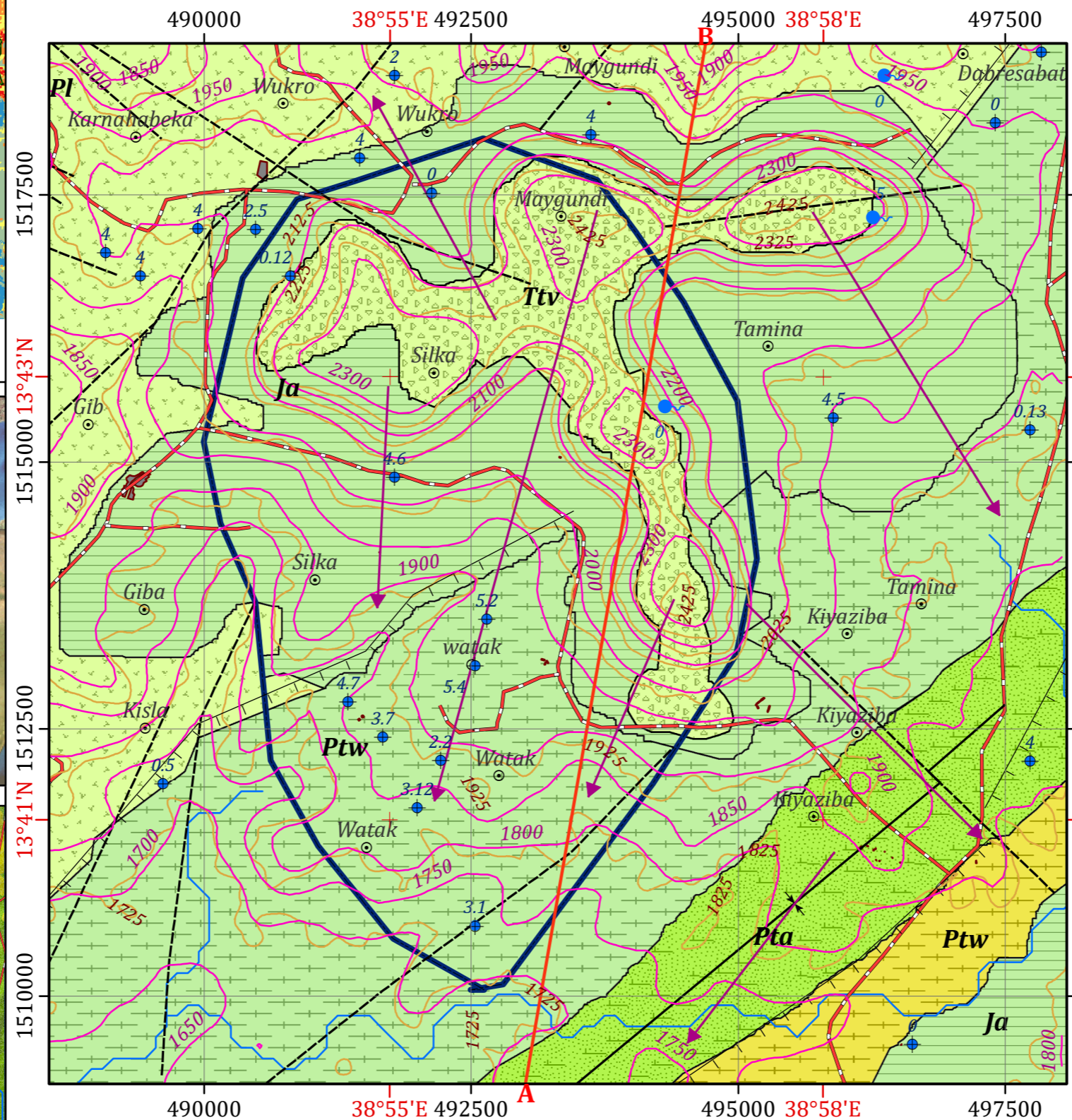
**INSET MAPS**



**Disclaimer:**

Administrative boundaries: CSA 2007  
 Built-up areas: Sentinel-2, Openstreetmap 2021

**HYDROGEOLOGICAL MAP OF TARGET AREA-II WITHIN KOLA TEMBEN WOREDA**



**Legend**

**AQUIFER CLASSIFICATION**

- Aquifer class-I:** Moderately productive fissured/Porous aquifer, (T =1-10m 2/d, Q =0.5- 5 l/s)
- Aquifer class-II:** Moderately productive fissured aquifers (T =1-10m 2/d, Q =0.5- 5 l/s)
- Aquifer class-III:** Moderately productive fissured/Karast aquifer, (T =1-10m 2/d, Q =0.5- 5 l/s)
- Aquifer class-IV:** Low productive fissured aquifers (T =0.1-1m 2/d, Q =0.05-0.5 l/s)

**LITHOSTRATIGRAPHIC UNITS**

- Ttv** Trap volcanics (Basalt)
- Ja** Adigrat sandstone
- Pta** Arequa Formation
- Ptw** Werii Slate
- PI** Tsaliyet Group

**GEOLOGICAL STRUCTURES**

- Normal fault
- Lineament
- Syncline

**OTHER SYMBOLS**

- Locality
- Spring
- Borehole
- Contour Line (25 m Interval)
- Drainage
- Main Road
- Cross Section Line
- Flow Direction
- Groundwater Contour
- Target Area-II
- Built-up Area

**HYDROGEOLOGICAL MAPPING FOR CLIMATE RESILIENT WASH IN ETHIOPIA - LOT-1**



Hydrogeological map production : Dr. Dessie N. & Shiferaw L.  
 Geological map production : Dr. Tarekgn T.& Dr. Yohannes D.  
 Cartography:- Assaminew G. February, 2022