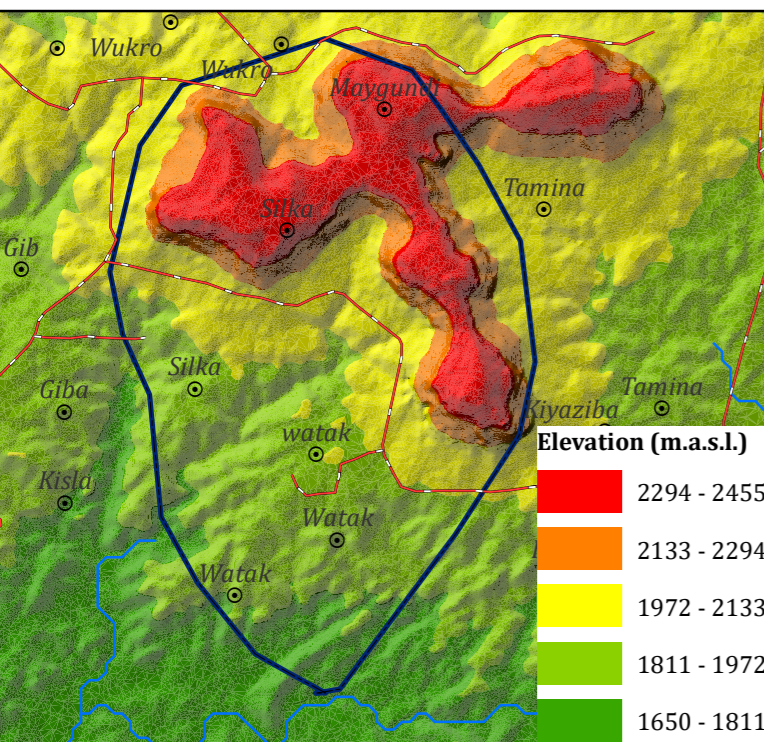
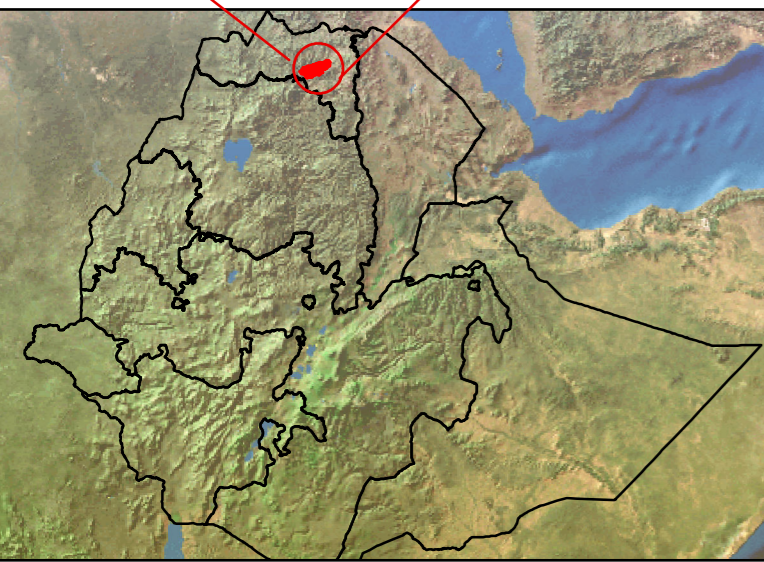
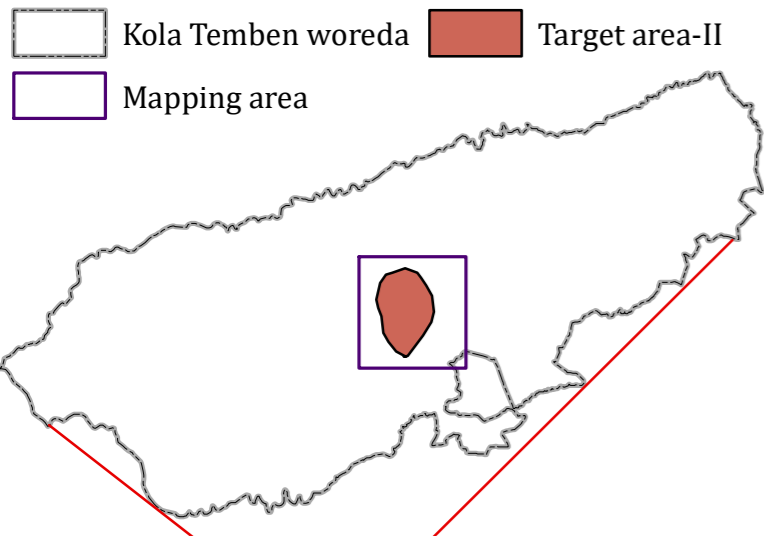
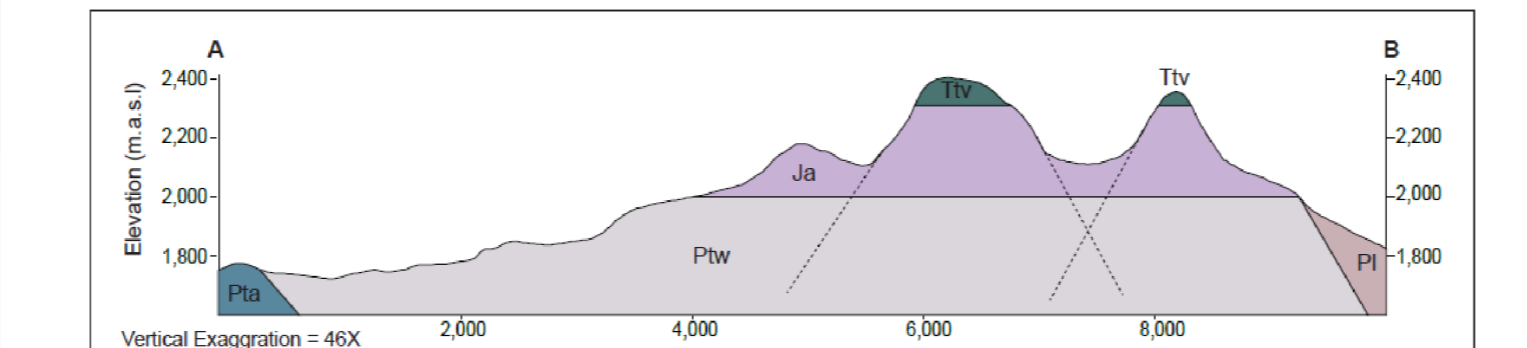
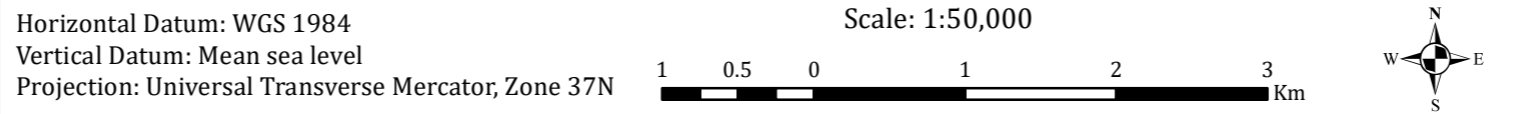
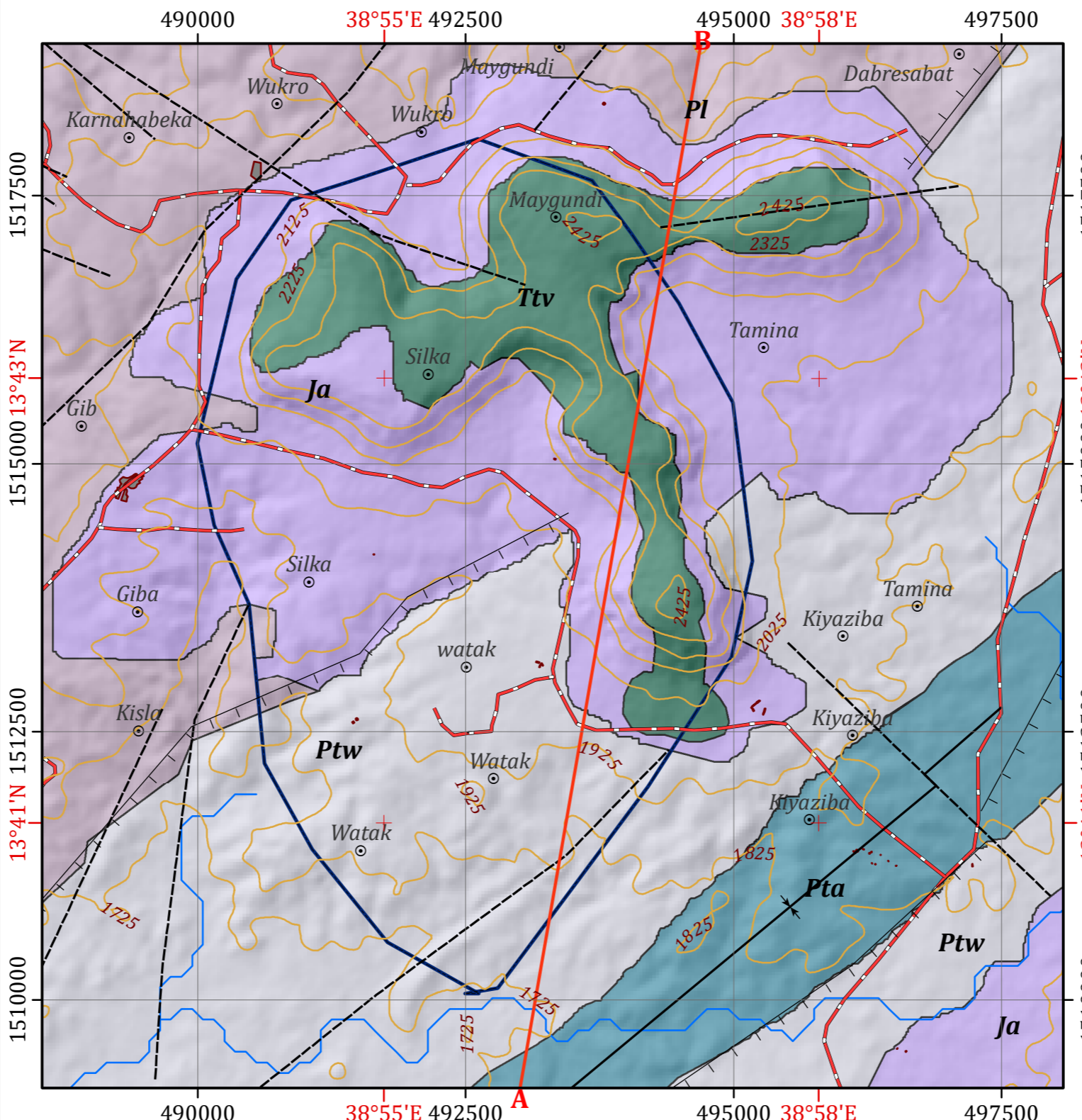


INSET MAPS



GEOLOGICAL MAP OF TARGET AREA-II WITHIN KOLA TEMBEN WOREDA



Legend

LITHOSTRATIGRAPHIC UNITS

- Ttv** Trap volcanics (Basalt)
- Ja** Adigrat sandstone: Sandstone, locally cross bedded, subordinate siltstone and shale
- Pta** Arequa Formation (Tembain Group): Undifferentiated slate phyllite calcareous sediments with limestone
- Ptw** Werii Slate: Black to purplish slate with calcareous intercalations
- Pl** Tsaliyet Group: Low grade, intermediate to basic metavolcanics, metagreywaks, phyllite (Tuffaceous metasediments)

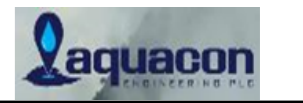
GEOLOGICAL STRUCTURES

- Normal fault
- Lineament
- Syncline

OTHER SYMBOLS

- Locality
- Contour Line (25 m Interval)
- Drainage
- Main Road
- Cross Section Line
- Target Area-II
- Built-up Area

HYDROGEOLOGICAL MAPPING FOR CLIMATE RESILIENT WASH IN ETHIOPIA - LOT-1



Disclaimer:
Administrative boundaries: CSA 2007
Built-up areas: Sentinel-2, Openstreetmap 2021

Map production : Dr. Tarekegn T.& Dr. Yohannes D.
Cartography:- Assaminew G.
February, 2022