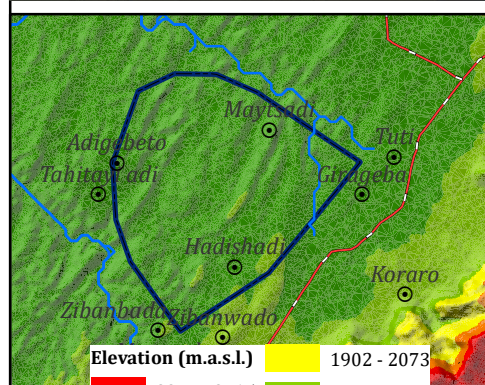
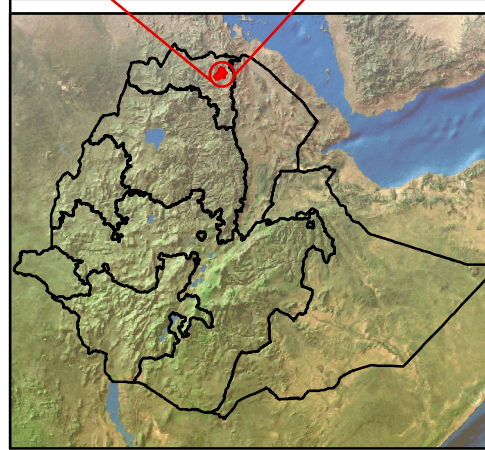
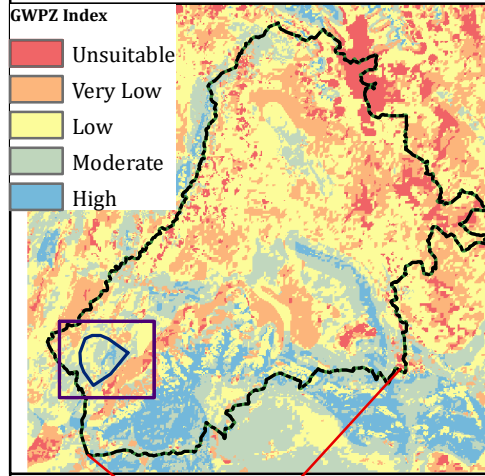
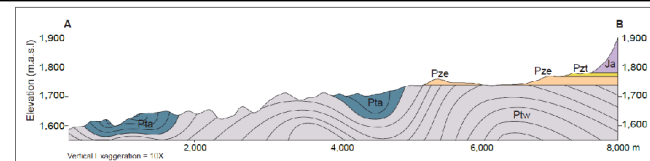
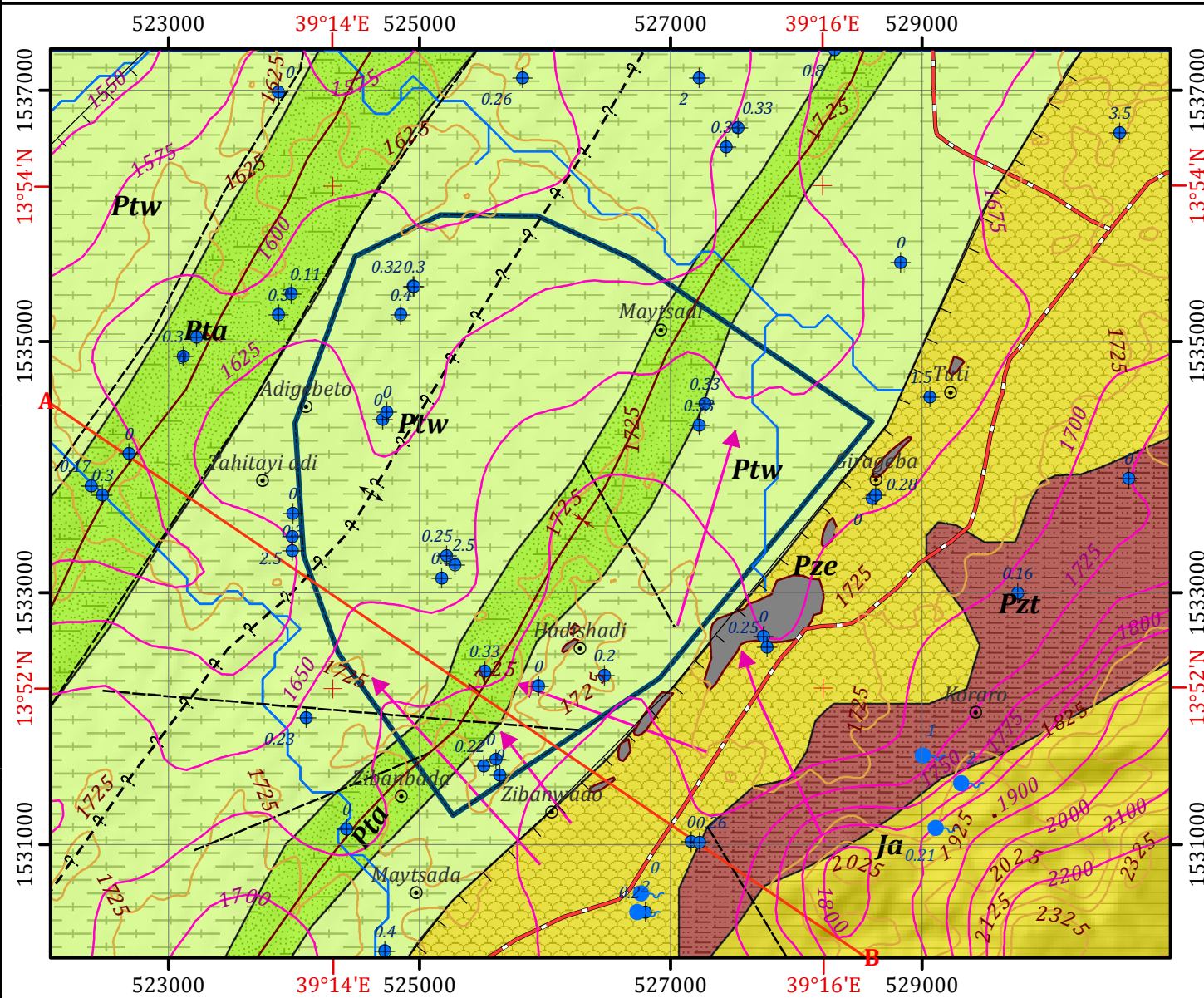


### INSET MAPS



## HYDROGEOLOGICAL MAP OF TARGET AREA-II WITHIN HAWZEN WOREDA



### Legend

#### AQUIFER CLASSIFICATION

- Aquifer class-I:** Moderately productive fissured/Porous aquifer, (T =1-10m  $2/d$ , Q =0.5- 5 l/s)
- Aquifer class-II:** Moderately productive fissured aquifers (T =1-10m  $2/d$ , Q =0.5- 5 l/s)
- Aquifer class-III:** Low productive fissured aquifers (T =0.1-1m  $2/d$ , Q =0.05-0.5 l/s)
- Aquitard**

#### LITHOSTRATIGRAPHIC UNITS

- Ja** Adigrat sandstone
- Ez** Edaga Arbi Tillite
- Pze** Enticho sandstone
- Ptq** Arequa Formation
- Ptw** Werii slate

#### GEOLOGICAL STRUCTURES

- Normal fault
- Lineament
- Anticline (inferred)
- Syncline

#### OTHER SYMBOLS

- Locality
- Borehole
- Spring
- Contour Line (25 m Interval)
- Drainage
- Main Road
- Cross Section Line
- Flow Direction
- Groundwater Contour
- Target Area-II
- Built-up Area

### HYDROGEOLOGICAL MAPPING FOR CLIMATE RESILIENT WASH IN ETHIOPIA - LOT-1



Hydrogeological map production : Dr. Dessie N. & Shiferaw L.  
Geological map production : Dr. Tarekgn T. & Dr. Yohannes D.  
Cartography:- Assaminew G. February, 2022

**Disclaimer:**  
Administrative boundaries: CSA 2007  
Built-up areas: Sentinel-2, Openstreetmap 2021