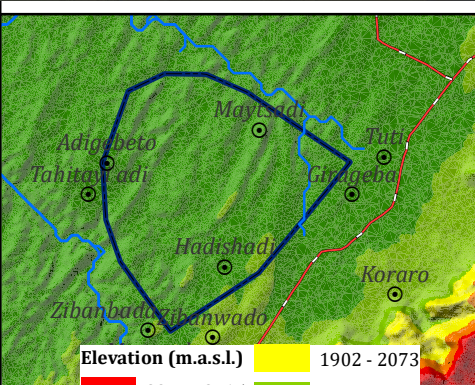
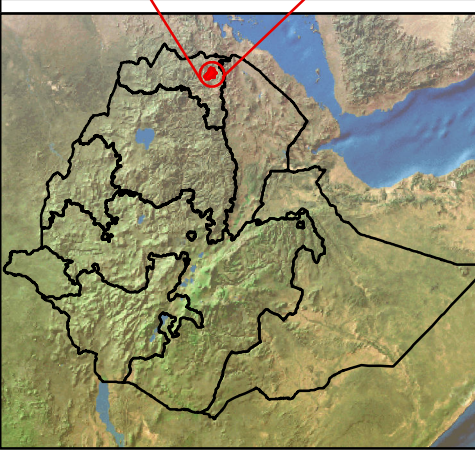
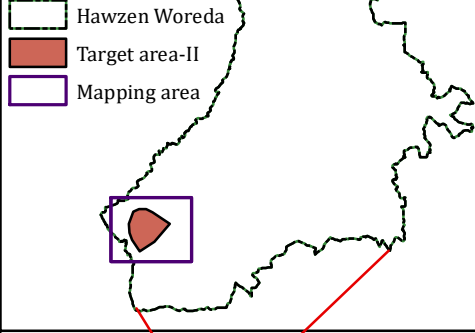


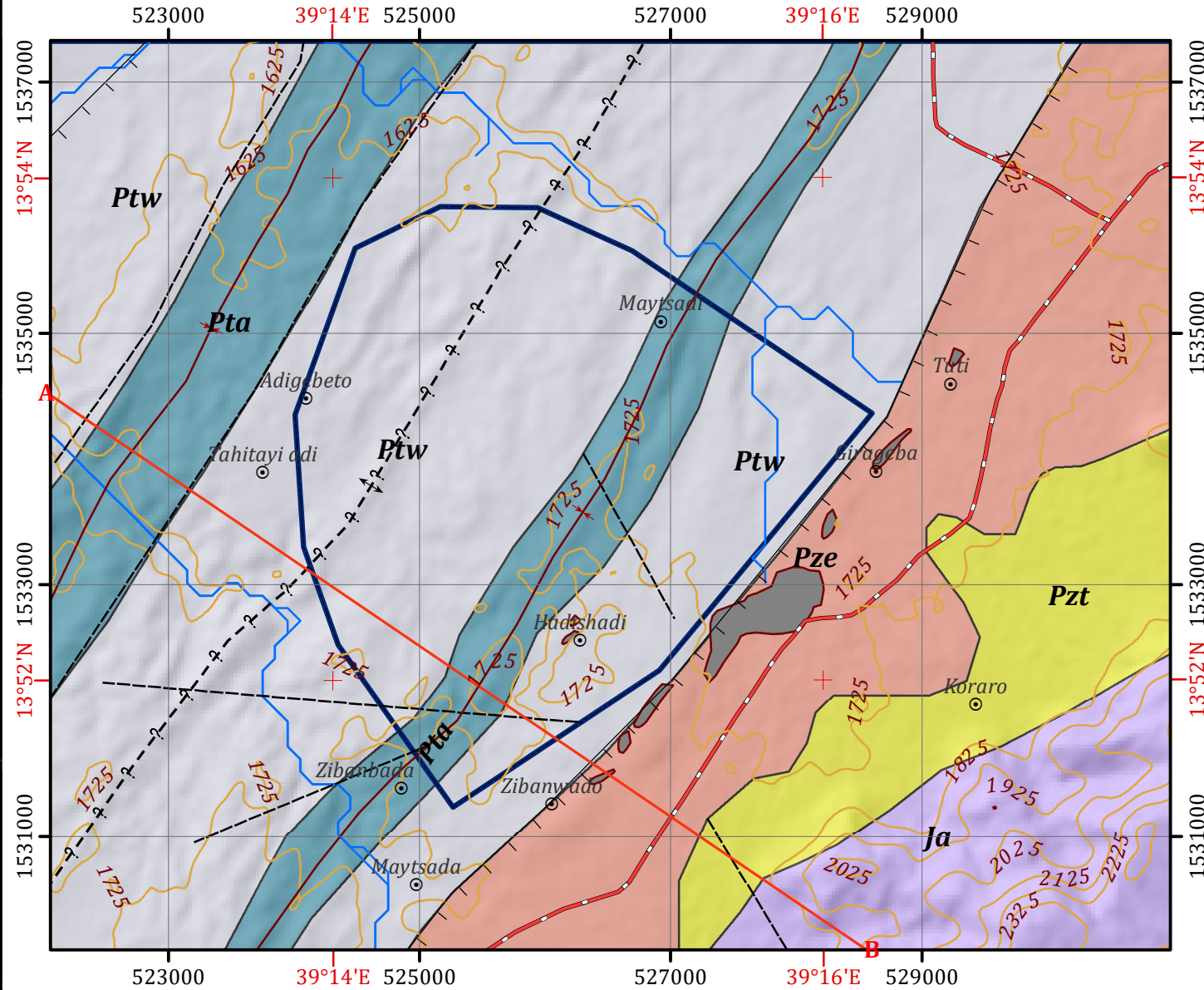
### INSET MAPS

**Legend**



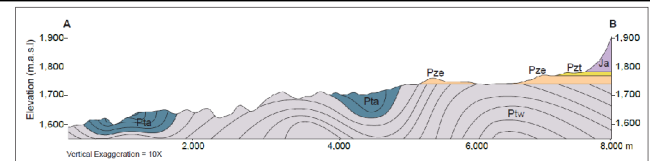
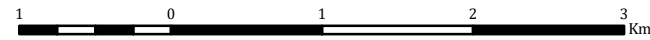
**Disclaimer:**  
 Administrative boundaries: CSA 2007  
 Built-up areas: Sentinel-2, Openstreetmap 2021

## GEOLOGICAL MAP OF TARGET AREA-II WITHIN HAWZEN WOREDA



Horizontal Datum: WGS 1984  
 Vertical Datum: Mean sea level  
 Projection: Universal Transverse Mercator, Zone 37N

Scale: 1:50,000



### Legend

#### LITHOSTRATIGRAPHIC UNITS

- Ja** Adigrat sandstone: Sandstone, locally cross bedded, subordinate siltstone and shale
- Pzt** Edaga Arbi Tillite
- Pze** Enticho sandstone
- Pta** Arequa Formation of Tembien Group: Undifferentiated slate phyllite calcareous sediments with limestone
- Ptw** Werii slate: Black to purplish slate with calcareous intercalations

#### GEOLOGICAL STRUCTURES

- |— Normal fault    - - - - - Lineament
- - <math>\nabla</math> - Anticline (inferred)
- <math>\nabla</math> - Syncline

#### OTHER SYMBOLS

- ⊙ Locality
- ~ Contour Line (25 m Interval)
- ~ Drainage
- ▬ Main Road
- A-B Cross Section Line
- ▭ Target Area-II
- Built-up Area

### HYDROGEOLOGICAL MAPPING FOR CLIMATE RESILIENT WASH IN ETHIOPIA - LOT-1



Map production : Dr. Tarekgn T.& Dr. Yohannes D.  
 Cartography:- Assaminew G. February, 2022