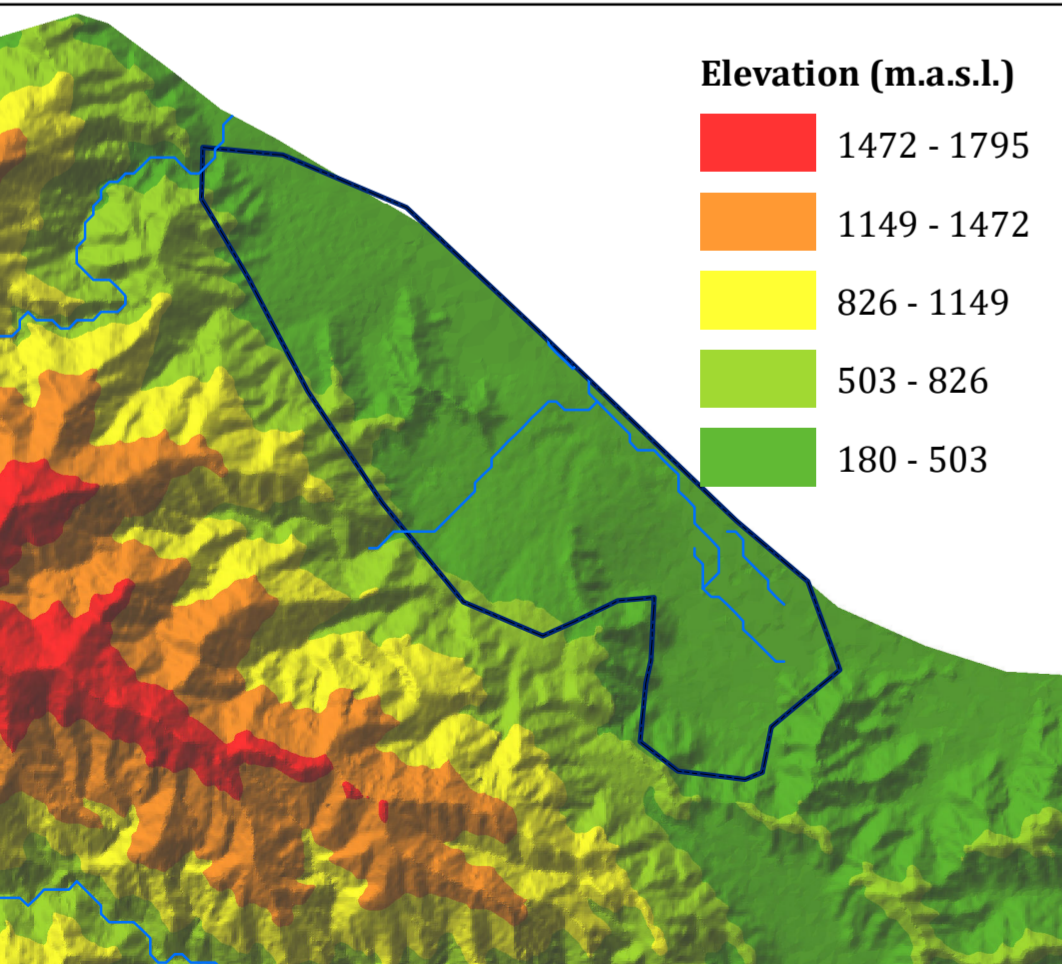
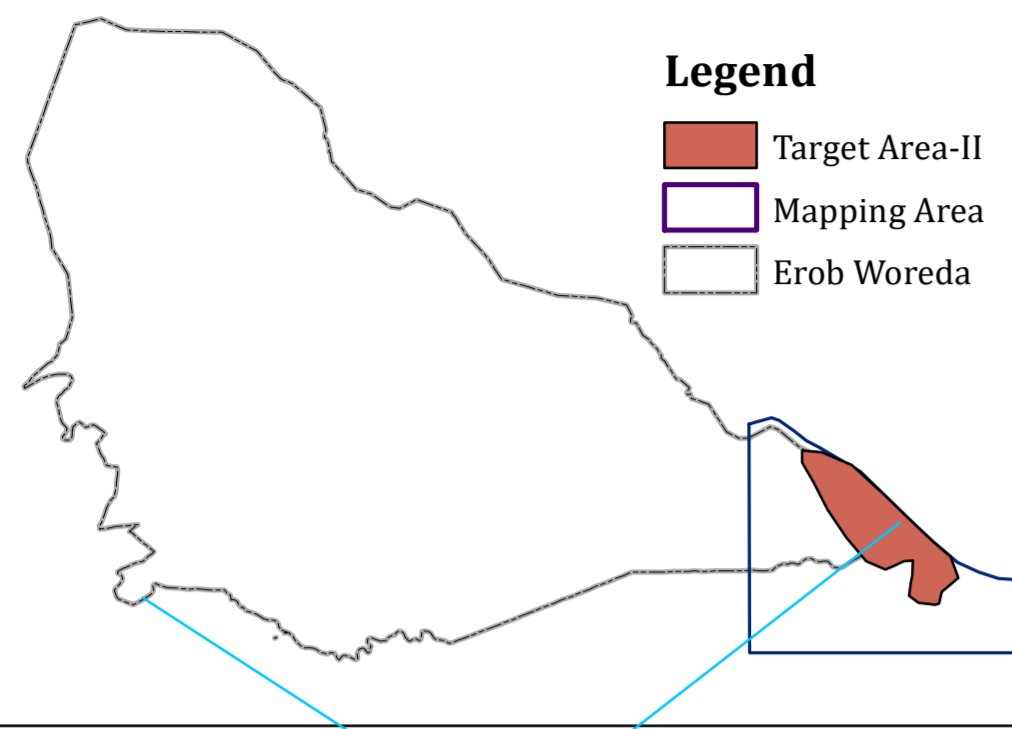


INSET MAPS

Legend

- Target Area-II
- Mapping Area
- Erob Woreda



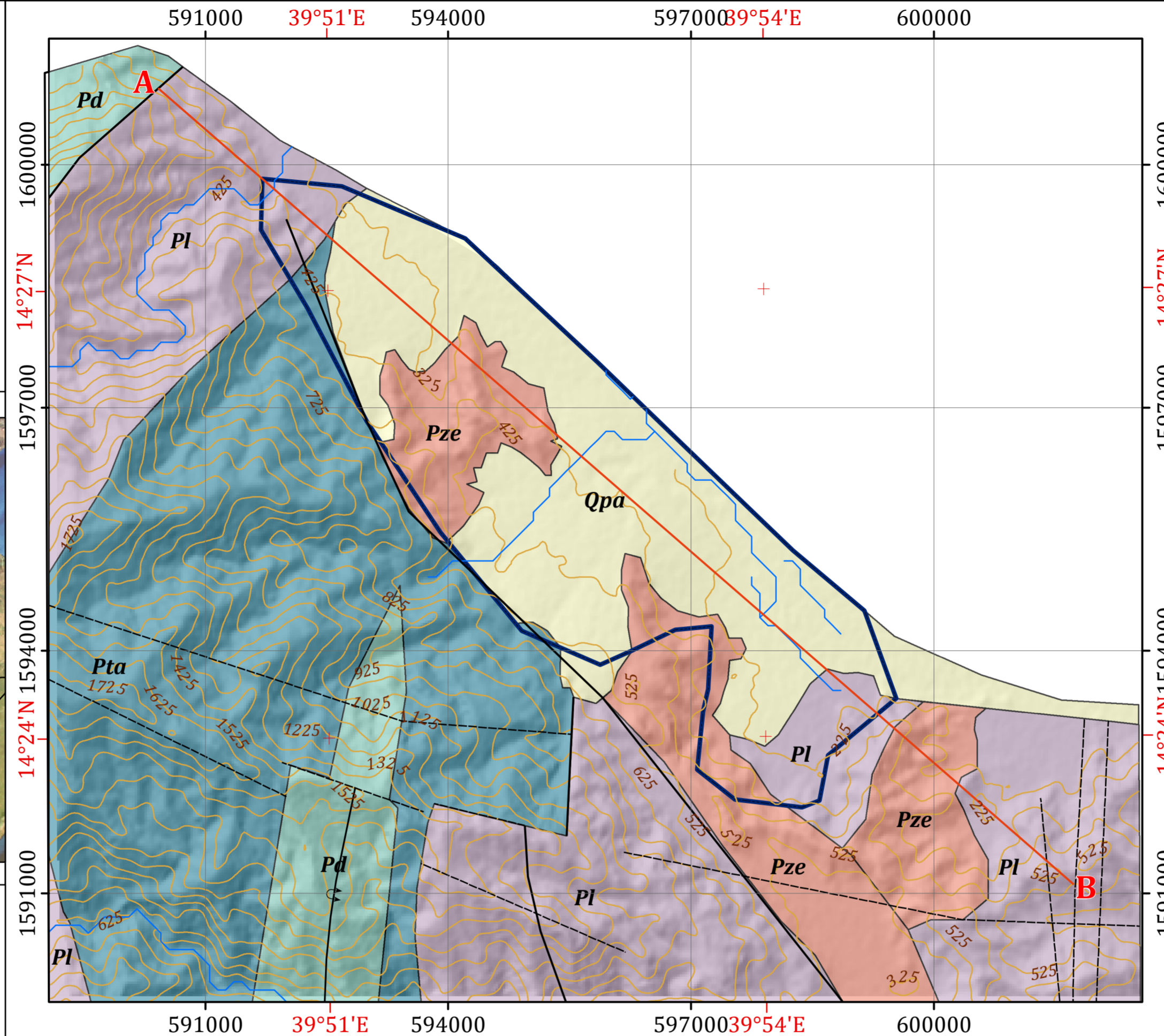
Elevation (m.a.s.l.)

- 1472 - 1795
- 1149 - 1472
- 826 - 1149
- 503 - 826
- 180 - 503

Disclaimer:

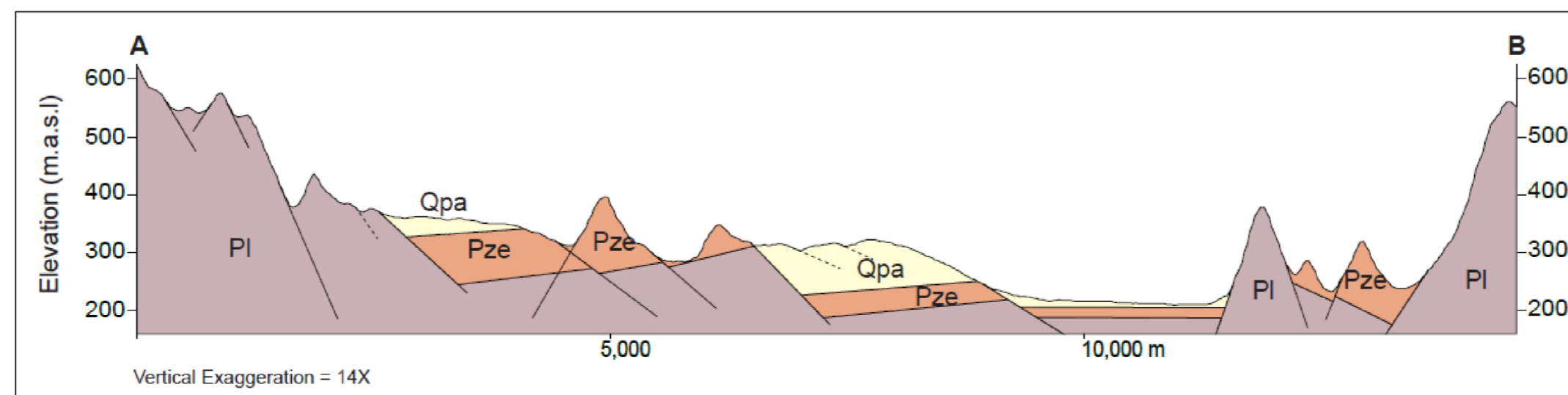
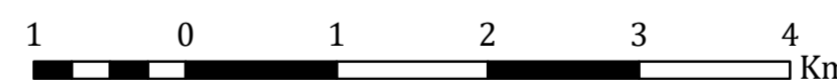
Administrative boundaries: CSA 2007
 Built-up areas: Sentinel-2, Openstreetmap 2021

GEOLOGICAL MAP OF TARGET AREA-II WITHIN EROB WOREDA



Horizontal Datum: WGS 1984
 Vertical Datum: Mean sea level
 Projection: Universal Transverse Mercator, Zone 37N

Scale: 1:50,000



Vertical Exaggeration = 14X

Legend

LITHOSTRATIGRAPHIC UNITS

- Qpa** Didikama Formation: Dolomite interbedded with slate
- Pze** Enticho sandstone
- Pd** Didikama Formation: Dolomite interbedded with slate
- Pta** Araequa Formation: Undifferentiated slate, phyllites, calcareous sediments, limestone
- Pl** Tsaliet Group: Intermediate and basic lavas, agglomerate, rhyolite

GEOLOGICAL STRUCTURES

- Lineament
- Normal Fault
- Overturned Anticline

OTHER SYMBOLS

- Contour Line (25 m Interval)
- Drainage
- A** **B** Cross Section Line
- Target Area-II

HYDROGEOLOGICAL MAPPING FOR CLIMATE RESILIENT WASH IN ETHIOPIA - LOT-1



Map production : Dr. Tarekegn T. & Dr. Yohannes D.
 Cartography:- Assaminew G. | February, 2022