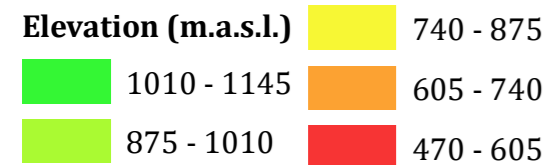
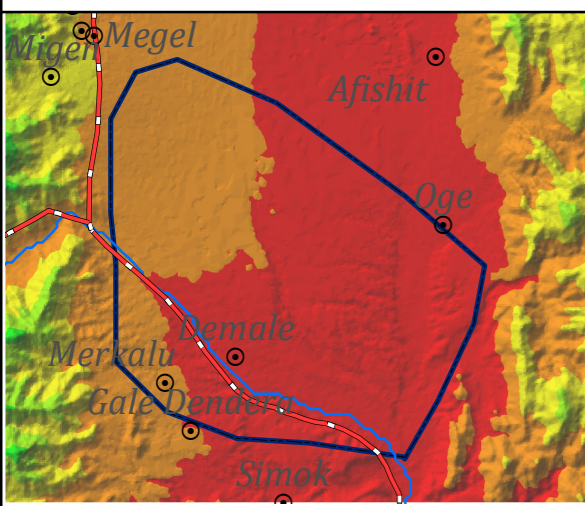
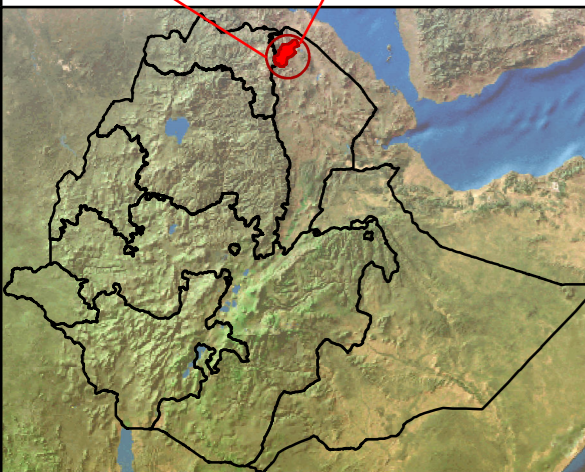
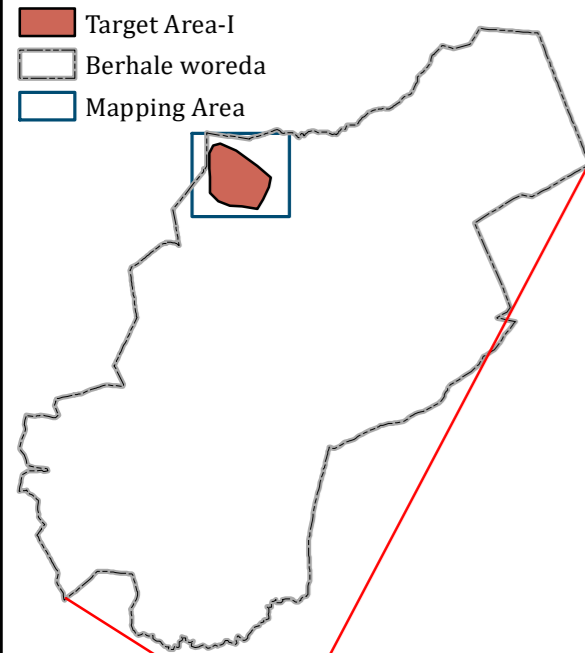


INSET MAPS

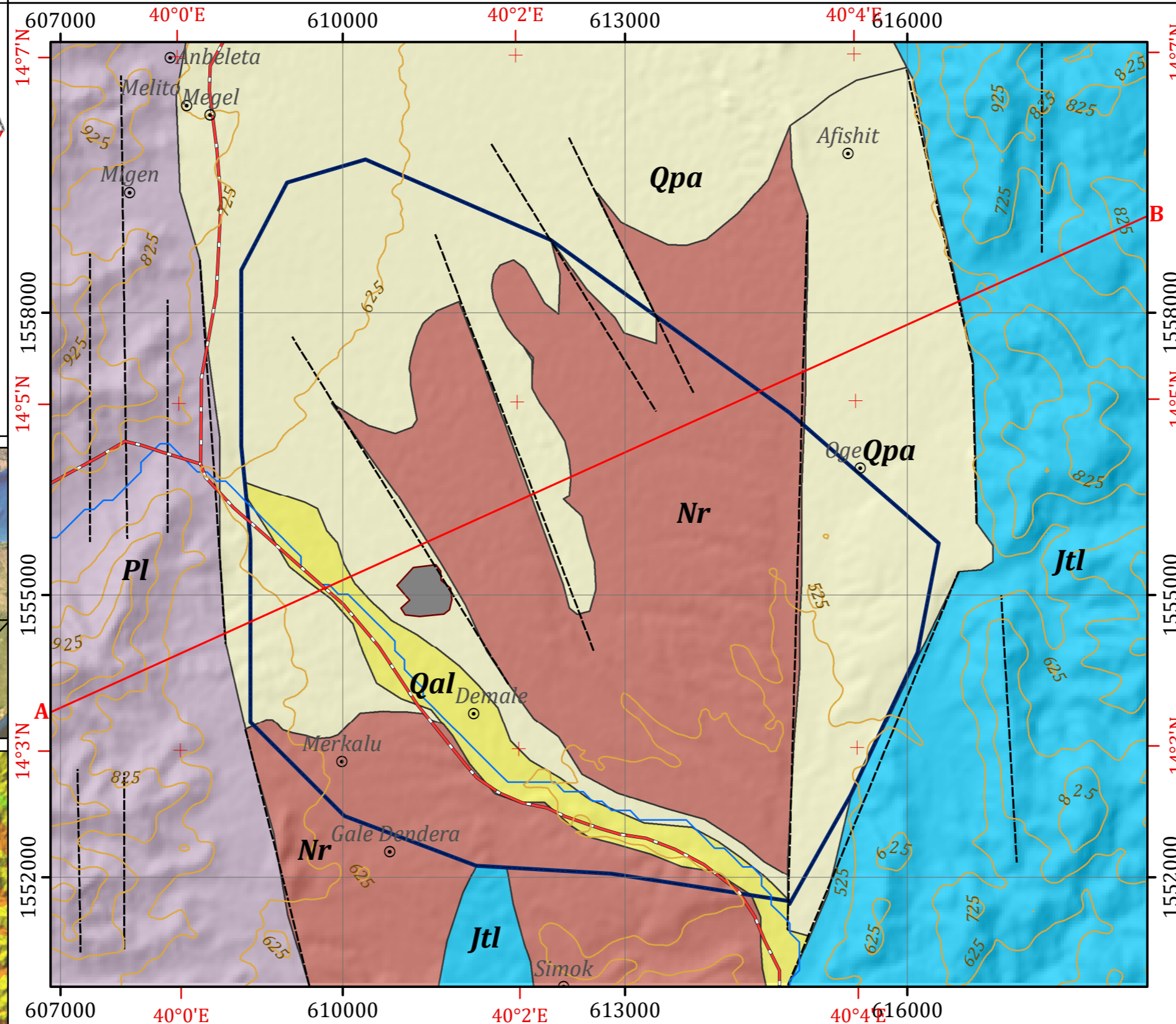
Legend



Disclaimer:

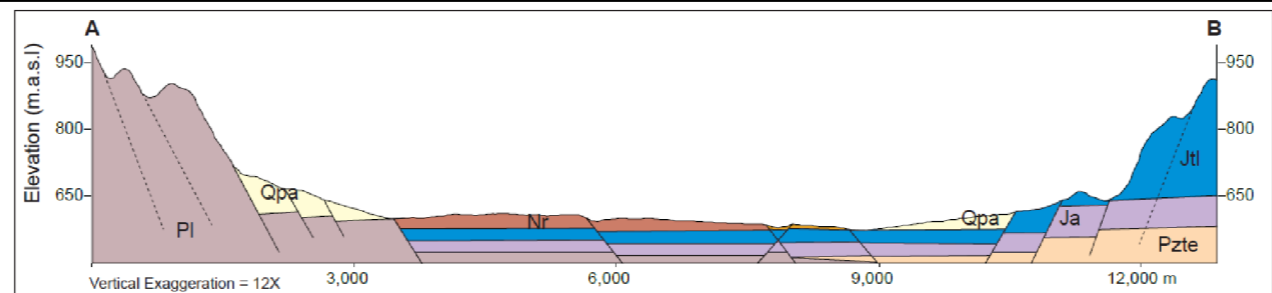
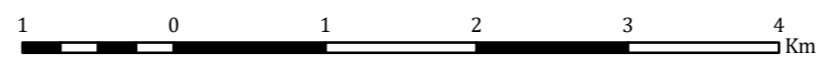
Administrative boundaries: CSA 2007
Built-up areas: Sentinel-2, Openstreetmap 2021

GEOLOGICAL MAP OF TARGET AREA-I WITHIN BEREHALE WOREDA



Horizontal Datum: WGS 1984
Vertical Datum: Mean sea level
Projection: Universal Transverse Mercator, Zone 37N

Scale: 1:50,000



Legend

LITHOSTRATIGRAPHIC UNITS

- Qal** Alluvial sediments: Undifferentiated, silt, sand and gravel
- Qpa** Didikma Formation: Dolomite interbedded with slate
- Nr** Denakil Formation (Red Series): Red conglomerate, sandstone, intercalation of basalt and pyroclast
- Jtl** Antalo Formation: Limestone, basalt intercalated with pyroclasts
- Pl** Tsaliyet Group: Intermediate and basic lavas, grey wack, tuffaceous slate, phyllite, agglomerate, rhyolite

GEOLOGICAL STRUCTURES

- Normal fault (inferred)

OTHER SYMBOLS

- ⊙ Locality
- ~ Contour Line (25 m Interval)
- ~ Drainage
- ~ Main Road
- A-B Cross Section Line
- Built-up Area
- Target Area-I

HYDROGEOLOGICAL MAPPING FOR CLIMATE RESILIENT WASH IN ETHIOPIA - LOT-1



Map production : Dr. Tarekegn T.& Dr. Yohannes D.
Cartography:- Assaminew G. February, 2022