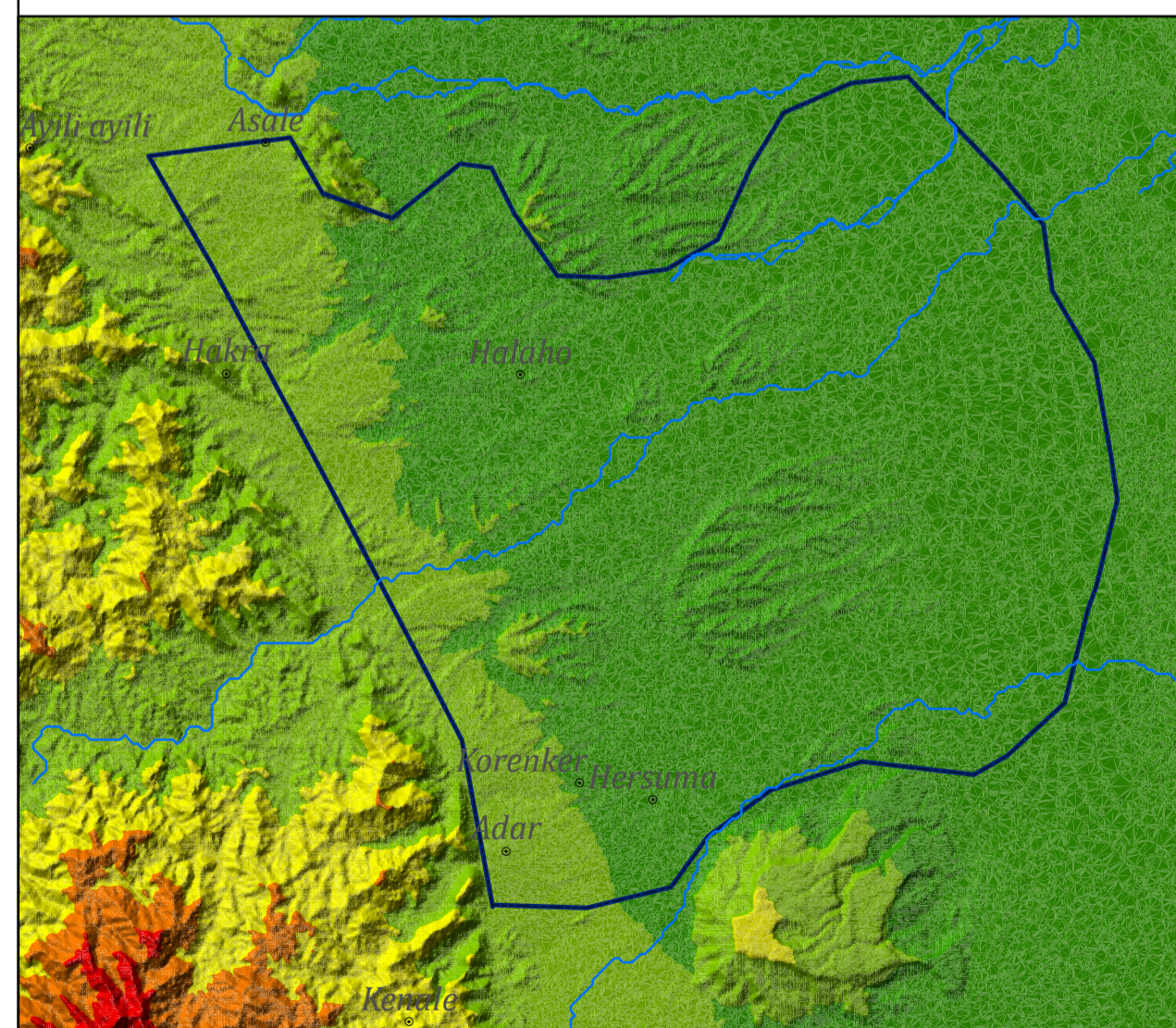
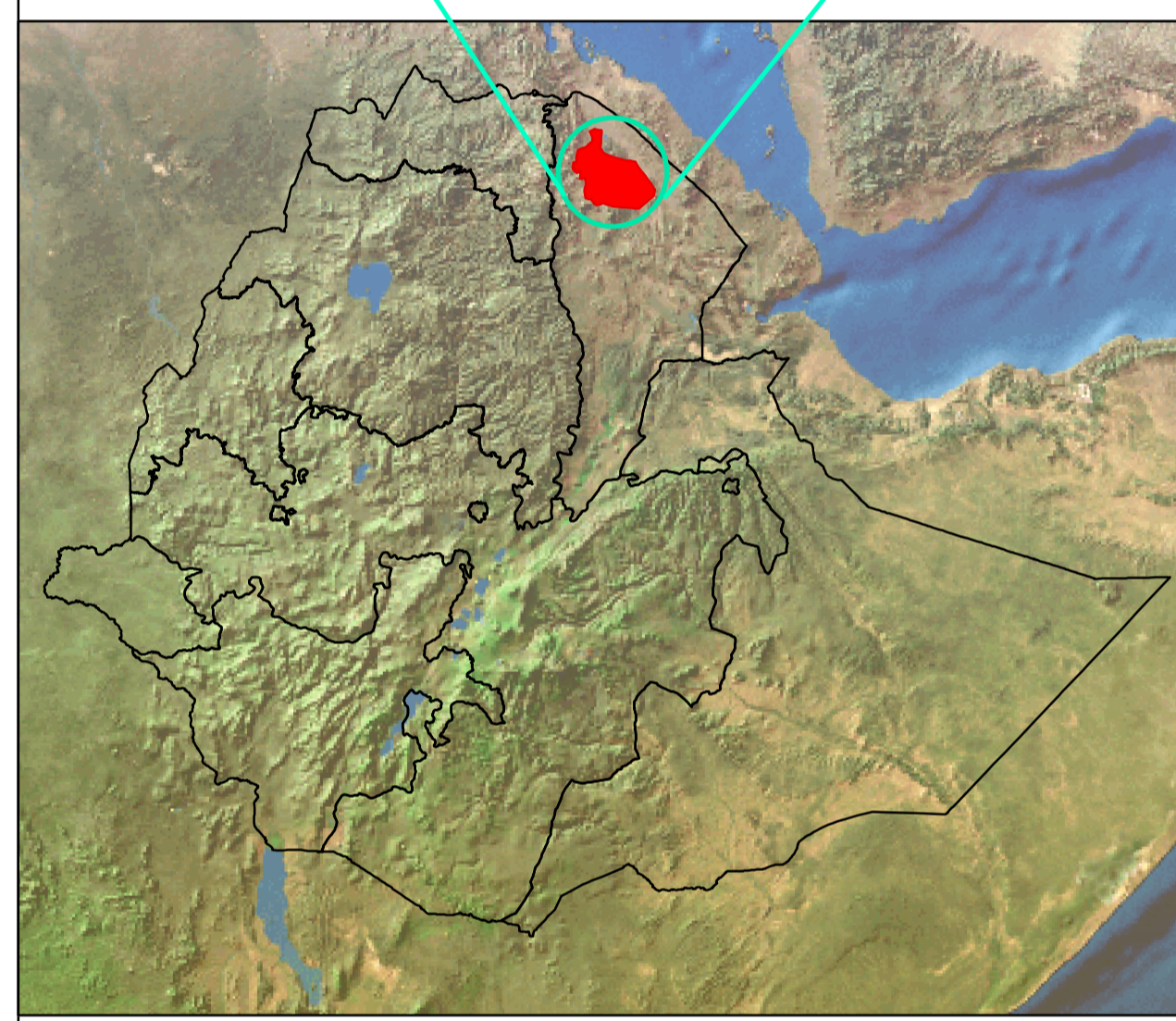
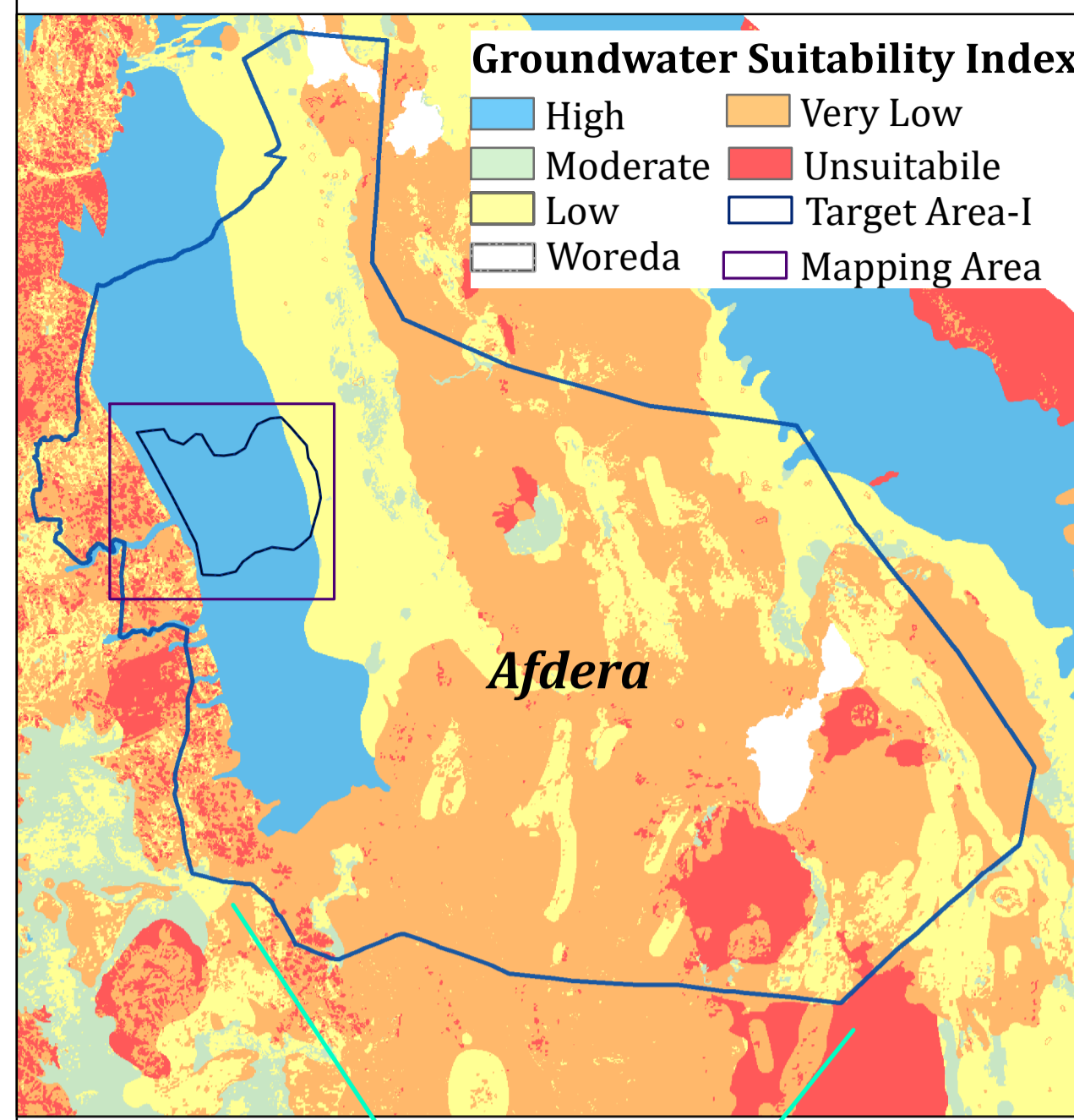
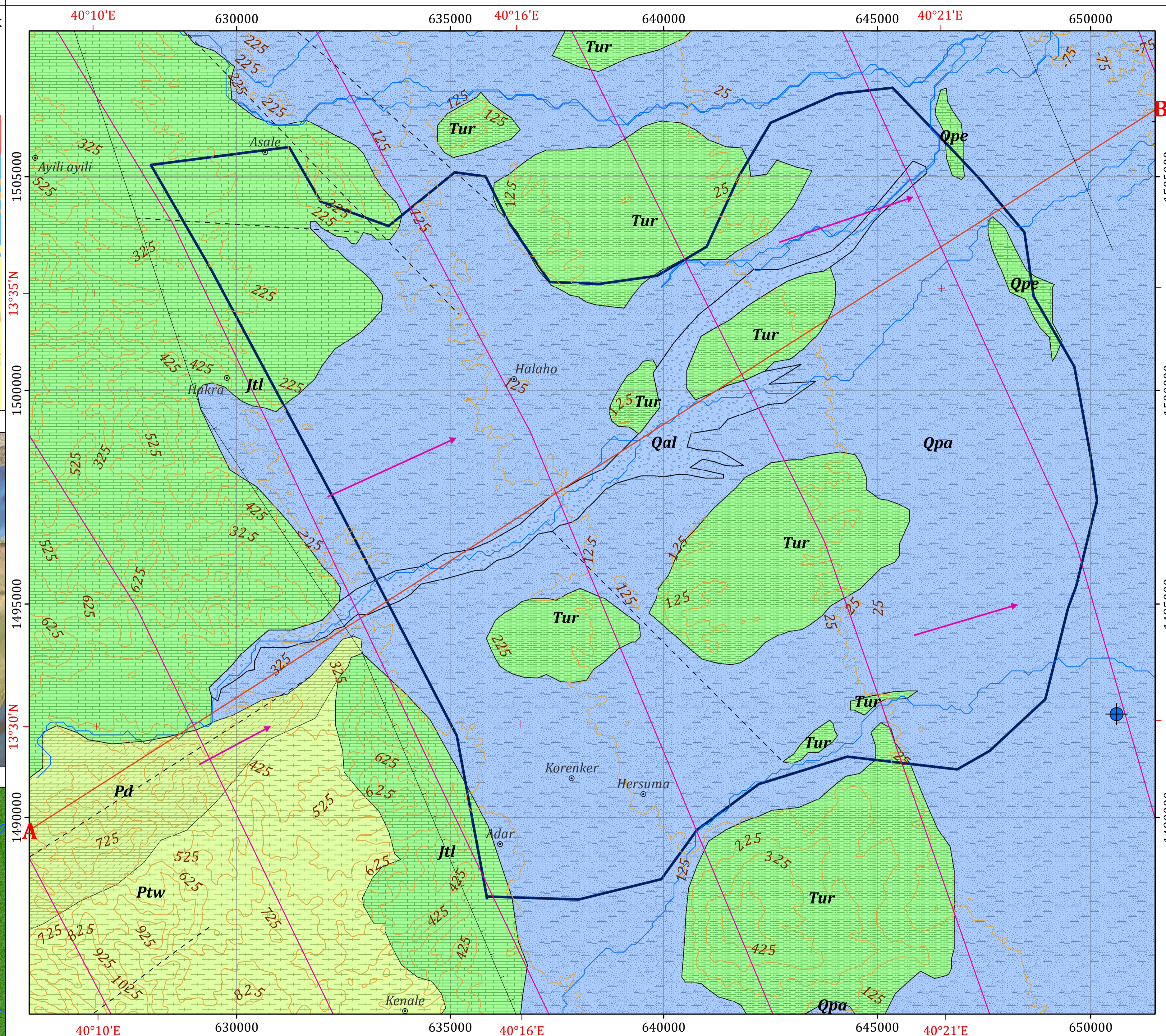


INSET MAPS



HYDROGEOLOGICAL MAP OF TARGET AREA-II WITHIN AFDERA WOREDA



Legend

AQUIFER CLASSIFICATION

- Aquifer class-I:** Highly productive porous shallow aquifers ($T = 10-100m$ 2/d, $q = 1-10l/s/m$, $Q = 5-25$ l/s for wells and/or springs) or locally extremely productive aquifers
- Aquifer class-II:** Moderately productive fissured /karst aquifers ($T = 1-10m$ 2/d, $q = 0.01-1l/s/m$, $Q = 0.5-5l/s$ for wells and locally highly productive aquifers in fracture zones and karsts)
- Aquifer class-III:** Low productive fissured aquifers ($T = 0.1-1m$ 2/d, $q = 0.001-0.01l/s/m$, $Q = 0.05-0.5$ l/s for wells and/or springs in which flow is mainly developed in irregular system of fissures & weathered mantle of acrySTALLINE rock)

LITHOSTRATIGRAPHIC UNITS

- Qal** Alluvium: Indifferentiated silt, sand and gravel
- Qpe** Enkalfo Formation (Marine Sediments): Oolitic limestone, conglomerate, marl and gypsum
- Qpa** Fluvial terraces of gravel and sandstone
- Tur** Conglomerate, sandstone, silt and clay, minor fossiliferous marl and limestone. Interbedded spilitite, tuff and minor acidic lava
- Jtl** Antalo Limestone: Limestone, fossiliferous, sandy limestone
- Pd** Didekama Formation: Dolomite interbedded with slate
- Ptw** Werii Slate: Black to purplish slate with calcareous intercalations

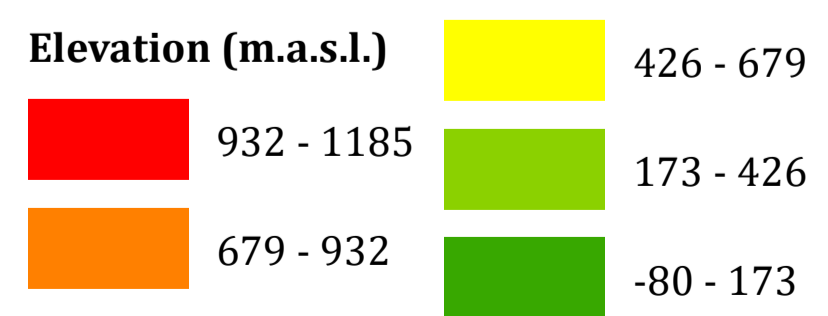
GEOLOGICAL STRUCTURES

- Normal fault (dashed line)
- Lineament (dotted line)

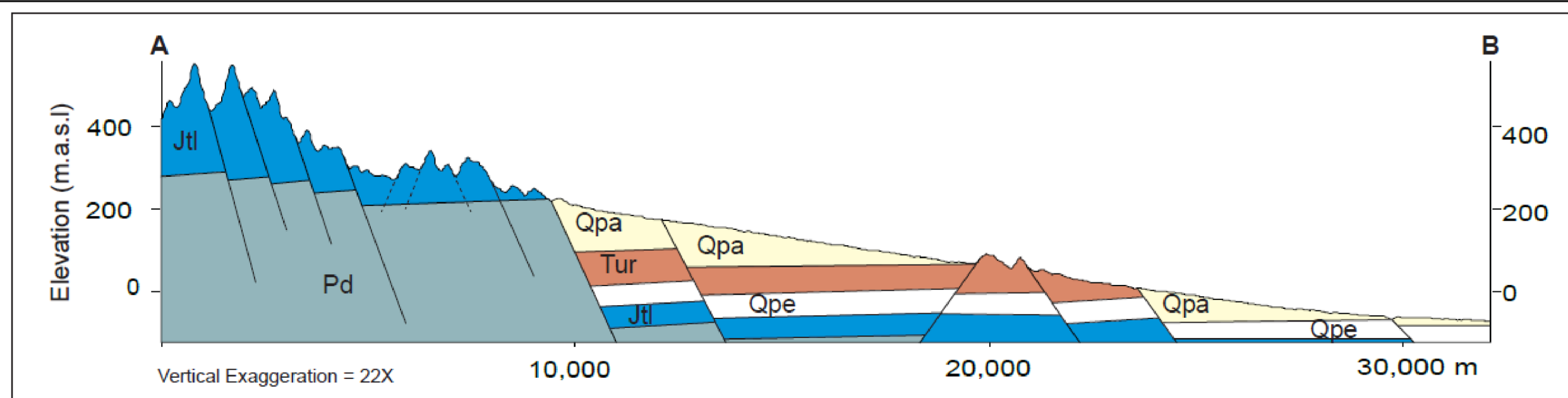
OTHER SYMBOLS

- Locality (circle with dot)
- Borehole (circle with crosshair)
- Contour Line (25 m Interval) (dashed line)
- Main Road (thick red line)
- Drainage (blue line)
- Groundwater Contour (pink line)
- Flow Direction (pink arrow)
- Cross Section Line (A-B)
- Target Area-II (pink outline)

HYDROGEOLOGICAL MAPPING FOR CLIMATE RESILIENT WASH IN ETHIOPIA - LOT-1



Disclaimer:
 Administrative boundaries: CSA 2007
 Built-up areas: Sentinel-2, Openstreetmap 2021



Hydrogeological map production : Dr. Dessie N. & Shiferaw L.
 Geological map production : Dr. Tarekgn T. & Dr. Yohannes D.
 Cartography:- Assaminew G.
 February, 2022