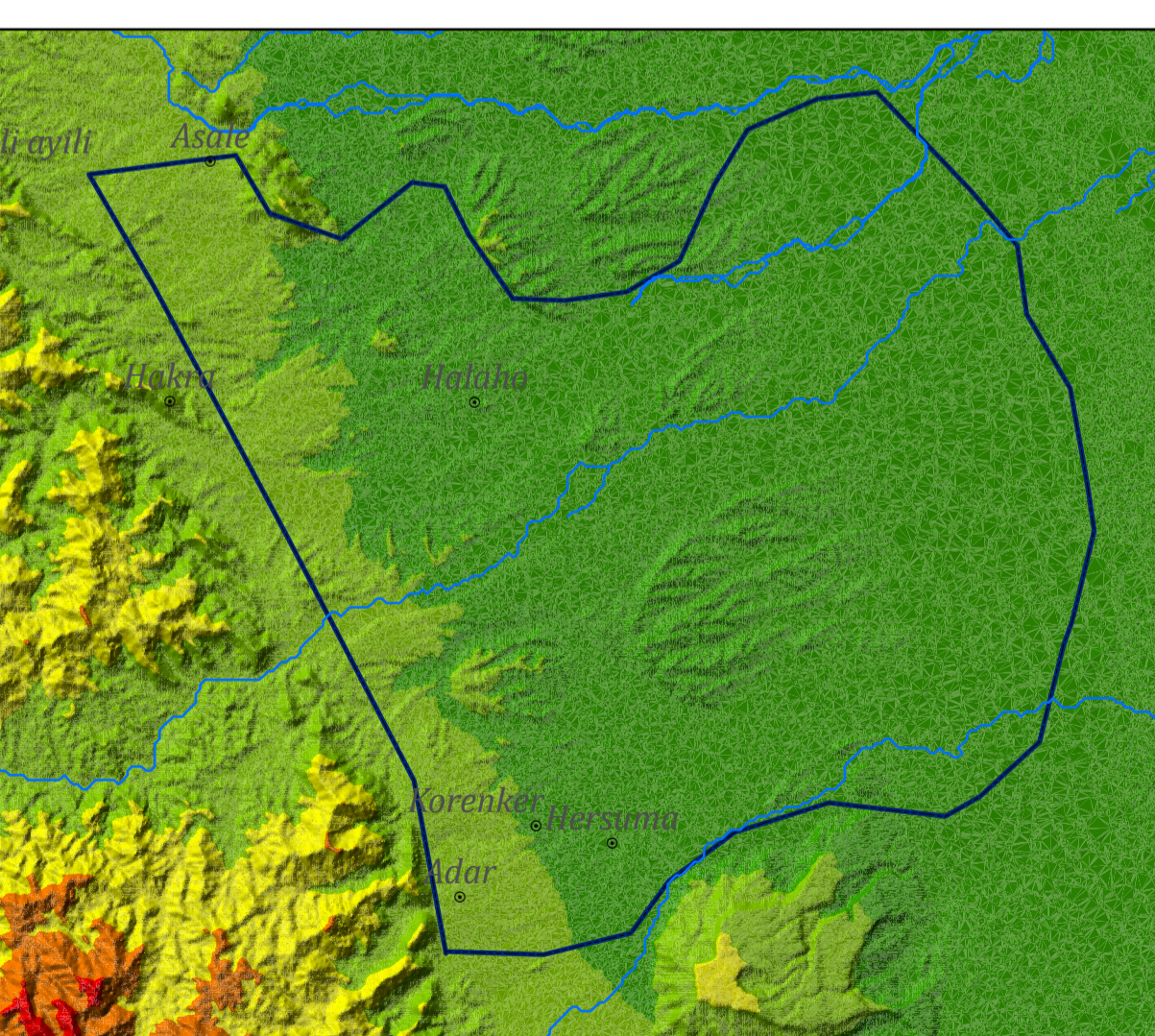
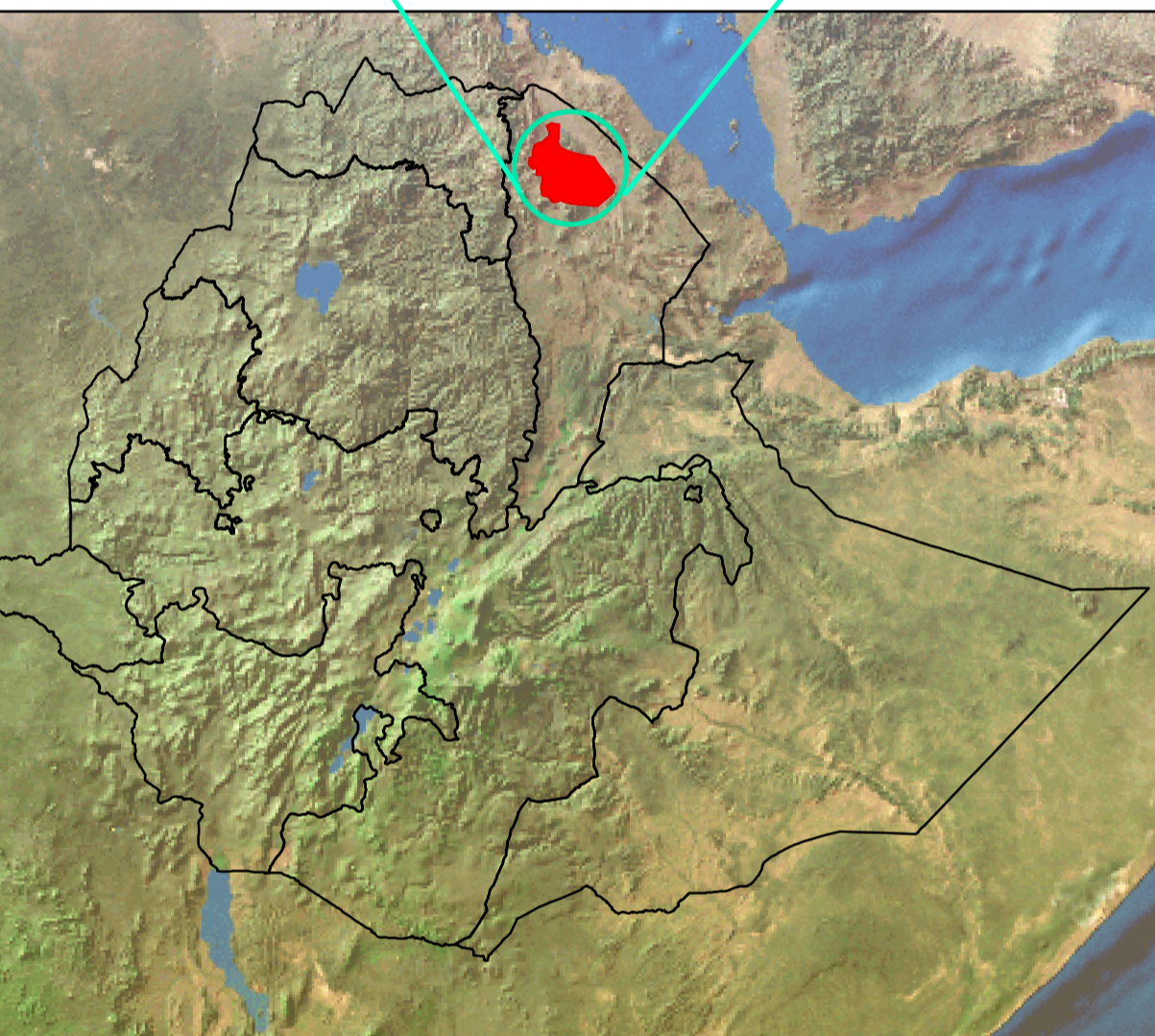
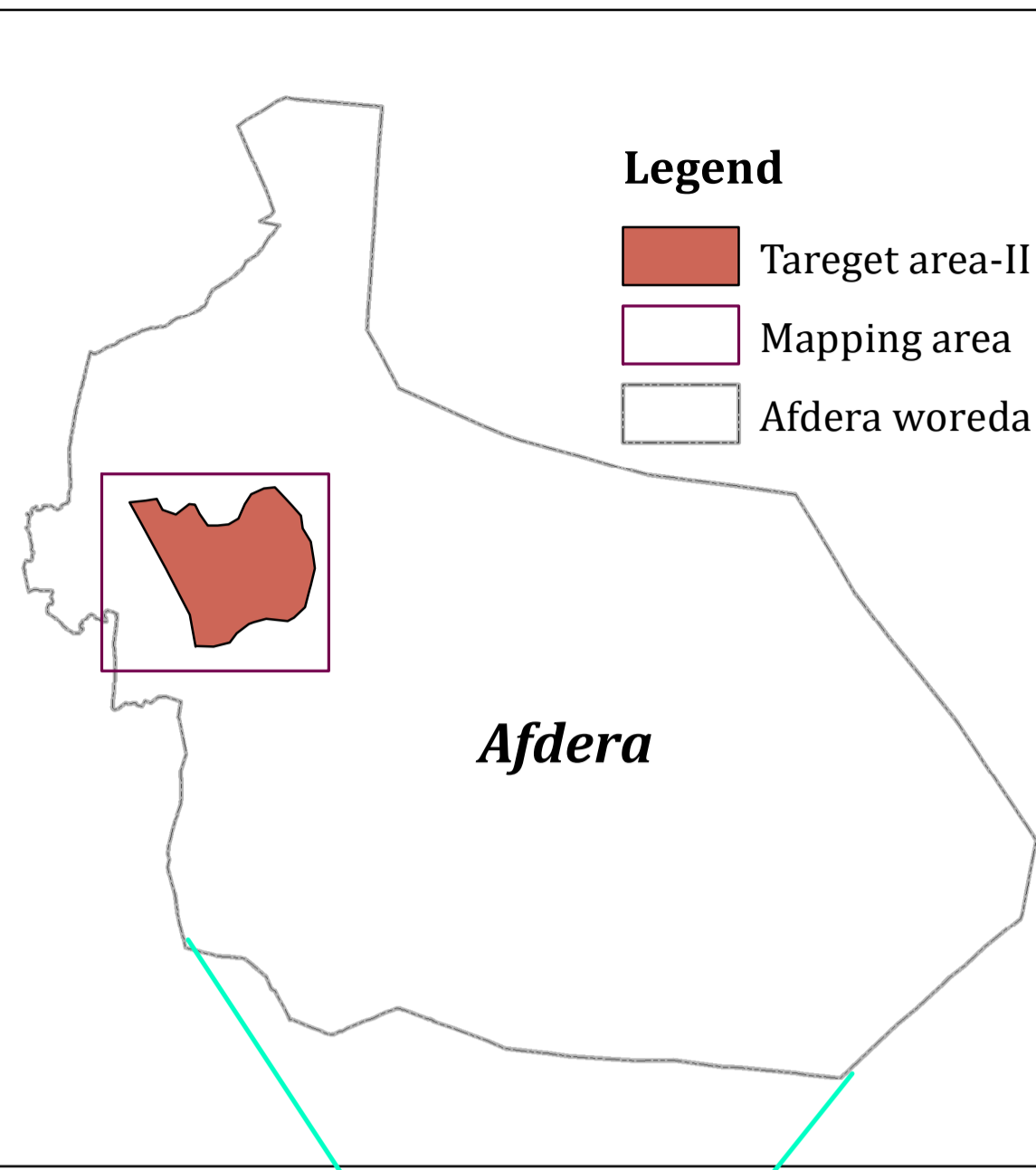
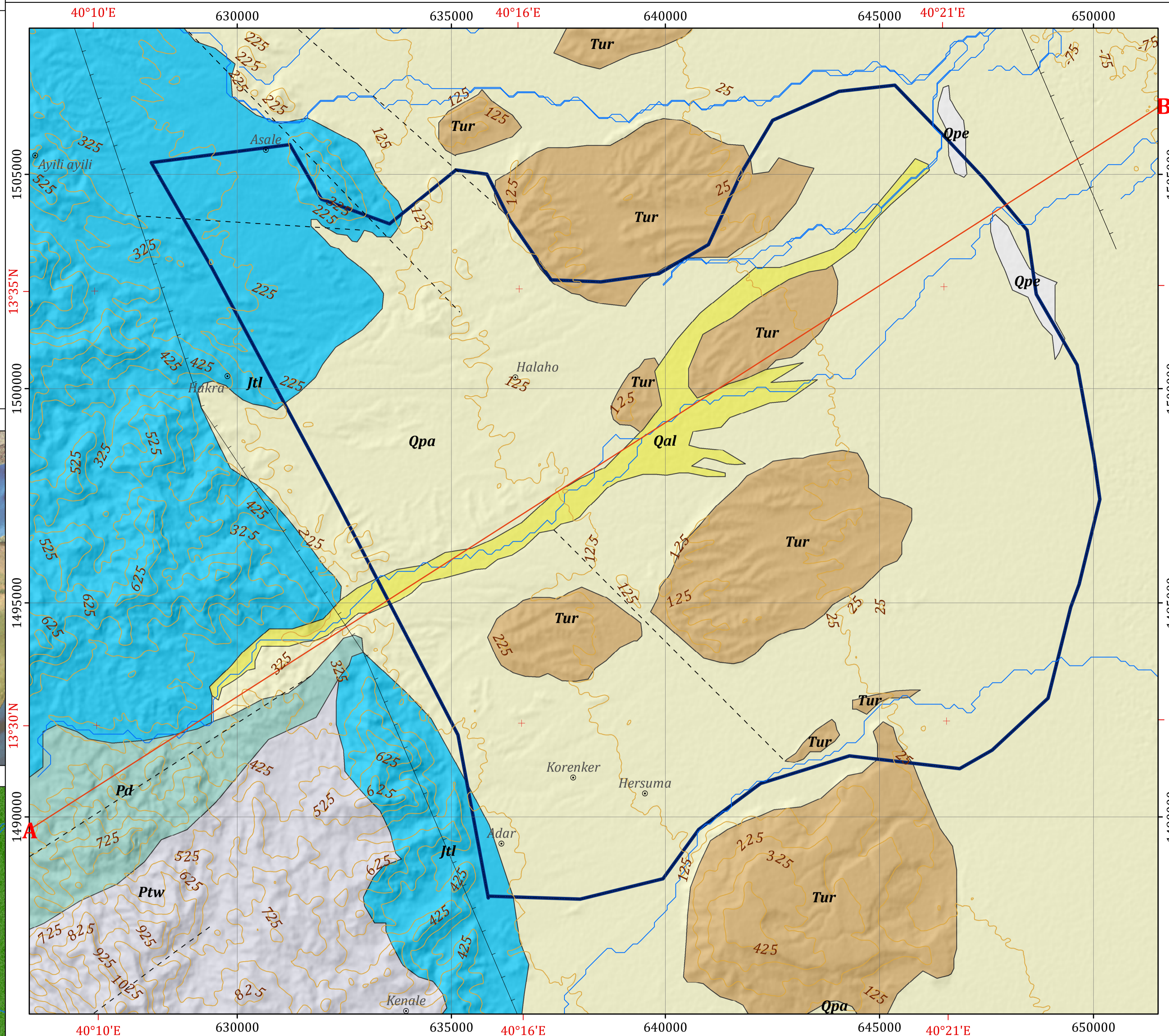


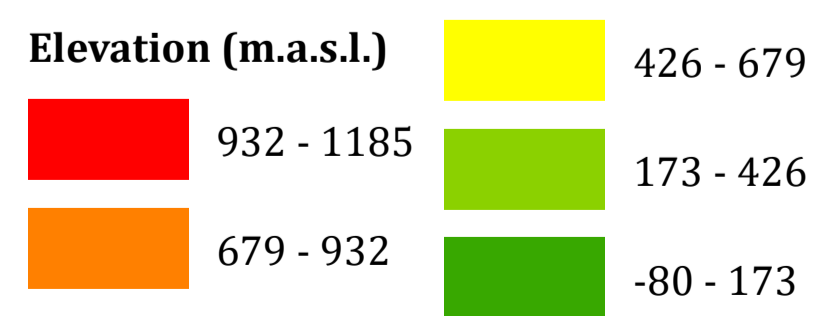
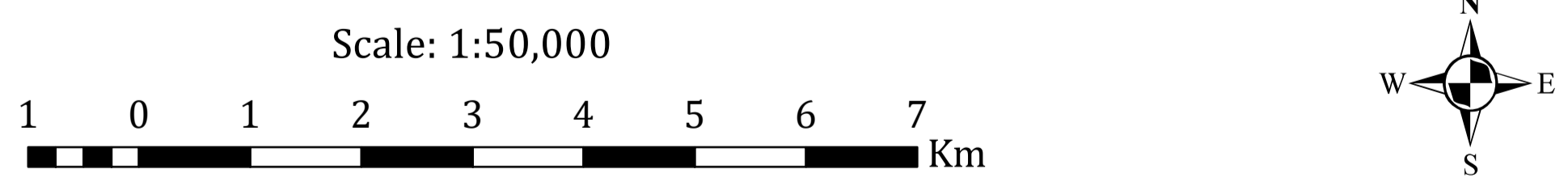
**INSET MAPS**



**GEOLOGICAL MAP OF TARGET AREA-II WITHIN AFDERA WOREDA**



Horizontal Datum: WGS 1984  
 Vertical Datum: Mean sea level  
 Projection: Universal Transverse Mercator, Zone 37N



**Legend**

**LITHOSTRATIGRAPHIC UNITS**

- Qal** Alluvium: Indifferentiated silt, sand and gravel
- Qpe** Fluvial terraces of gravel and sandstone
- Qpa** Didikma Formation: Dolomite interbedded with slate
- Tur** Conglomerate, sandstone, silt and clay, minor fossiliferous marl and limestone. Interbedded spilite, tuff and minor acidic lava
- Jtl** Antalo Limestone: Limestone, fossiliferous, sandy limestone
- Pd** Didekama Formation: Dolomite interbedded with slate
- Ptw** Werii Slate: Black to purplish slate with calcareous intercalations

**GEOLOGICAL STRUCTURES**

- Normal fault
- - - Lineament

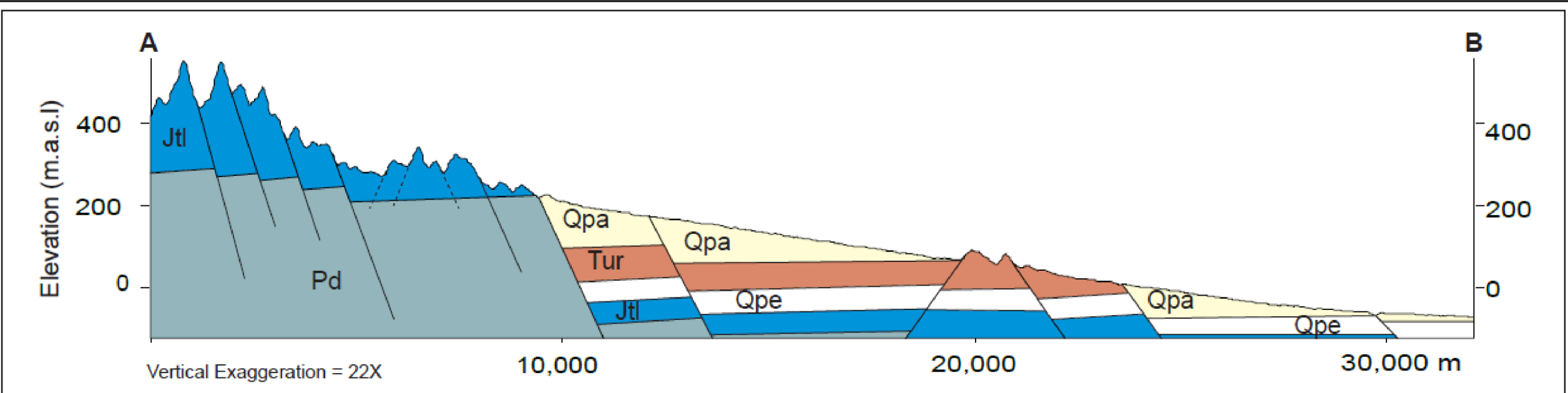
**OTHER SYMBOLS**

- ⊙ Locality
- ~ Contour Line (25 m Interval)
- ~ Drainage
- Main Road
- A-B Cross Section Line
- Target Area-II

**HYDROGEOLOGICAL MAPPING FOR CLIMATE RESILIENT WASH IN ETHIOPIA - LOT-1**



**Disclaimer:**  
 Administrative boundaries: CSA 2007  
 Built-up areas: Sentinel-2, Openstreetmap 2021



Map production : Dr. Tarekegn T.& Dr. Yohannes D.  
 Cartography:- Assaminew G. February, 2022