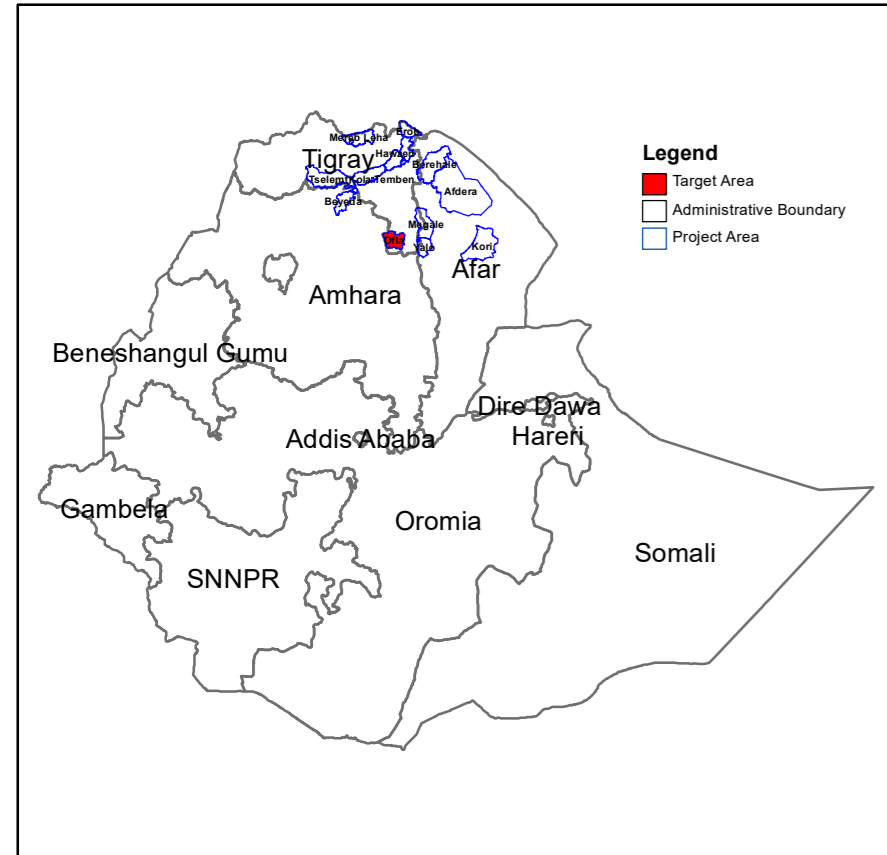
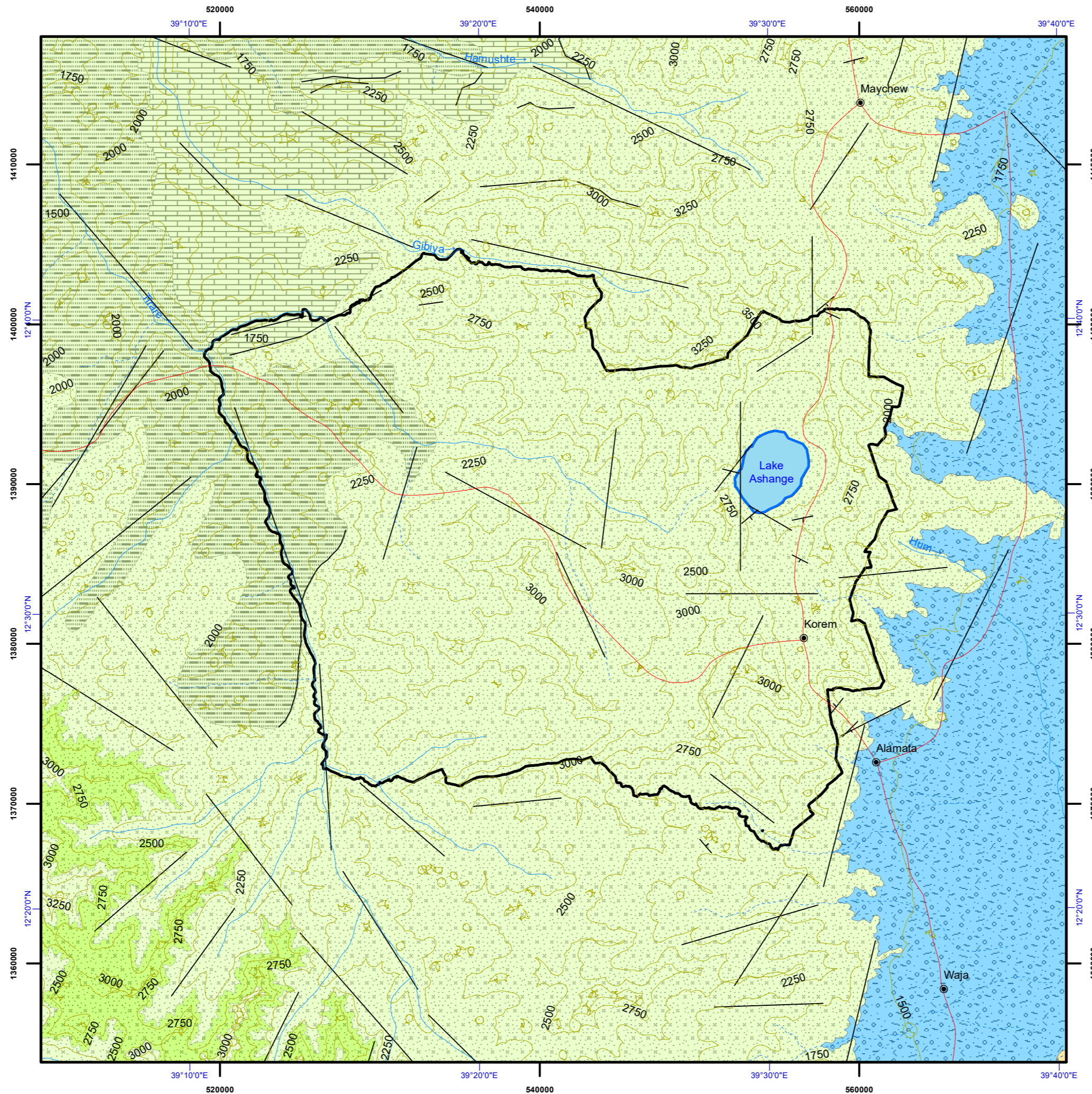
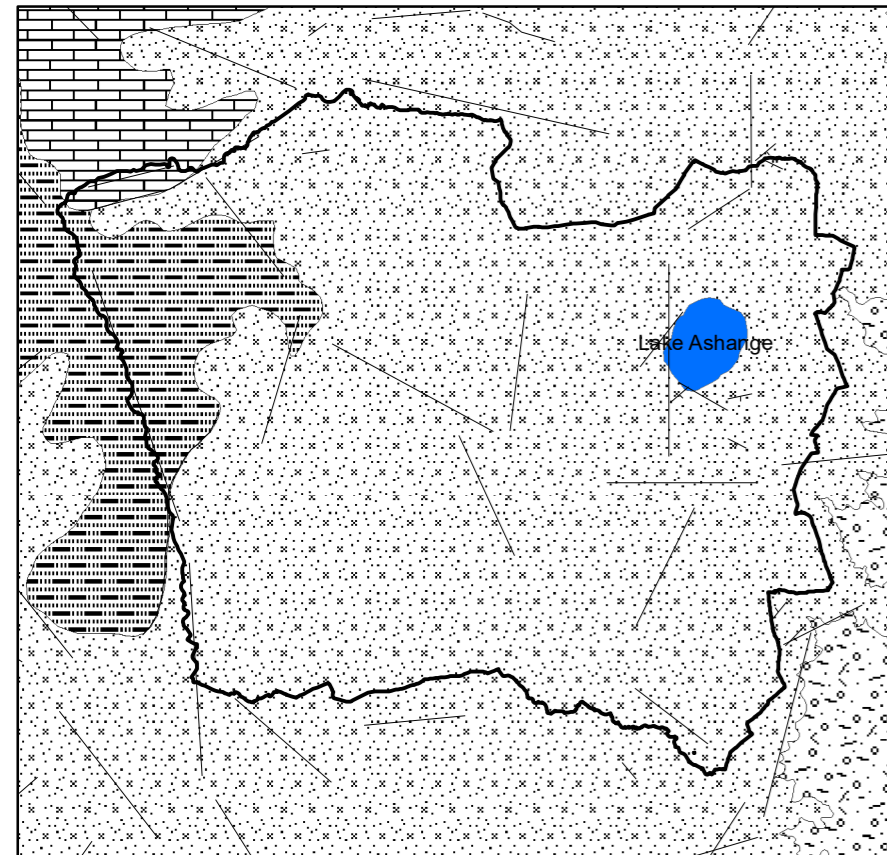


HYDROGEOLOGICAL MAP OF OFLA

PROJECT AREA



GEOLOGICAL MAP OF OFLA



LEGEND

Aquifer Classification

Highly productive porous aquifers (T = 10 – 100 m²/d, q = 1 - 10 l/s.m, Q = 5 - 25 l/s for wells and/or springs) or locally extremely productive aquifers

- Perennial river
- Intermittent river
- lake
- Contour
- Fault
- Town
- Road
- Woreda Boundary

Lithology

- Alluvial and lacustrine sediments – clay and sand with gravel, dunes and other aeolian deposits (in Afar)
- Basalt with minor trachyte and upper pyroclastic
- Sandstone – Adigrat, Amba Aradom, Enticho

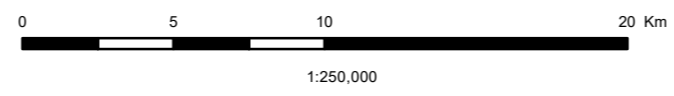
Hydrogeological Mapping for Climate Resilient Wash in Ethiopia - Lot 1

Basins Development Authority
የተፋሰሶች ልማት ባለስልጣን

ACACIA WATER
aquacon

Disclaimer:

This document was produced with the financial assistance of The Department for International Development, UK. The boundaries in this map are not authoritative or political. Geology compiled by Geological Survey of Ethiopia from 1971 to 2015. Hydrogeology compiled by: Jiri Sima, 2021. Digital Cartography: Shiferaw Ayele Mamo, 2021.



Horizontal Datum: WGS 1984
Vertical Datum: Mean sea level
Projection: Universal Transverse Mercator, Zone 37N