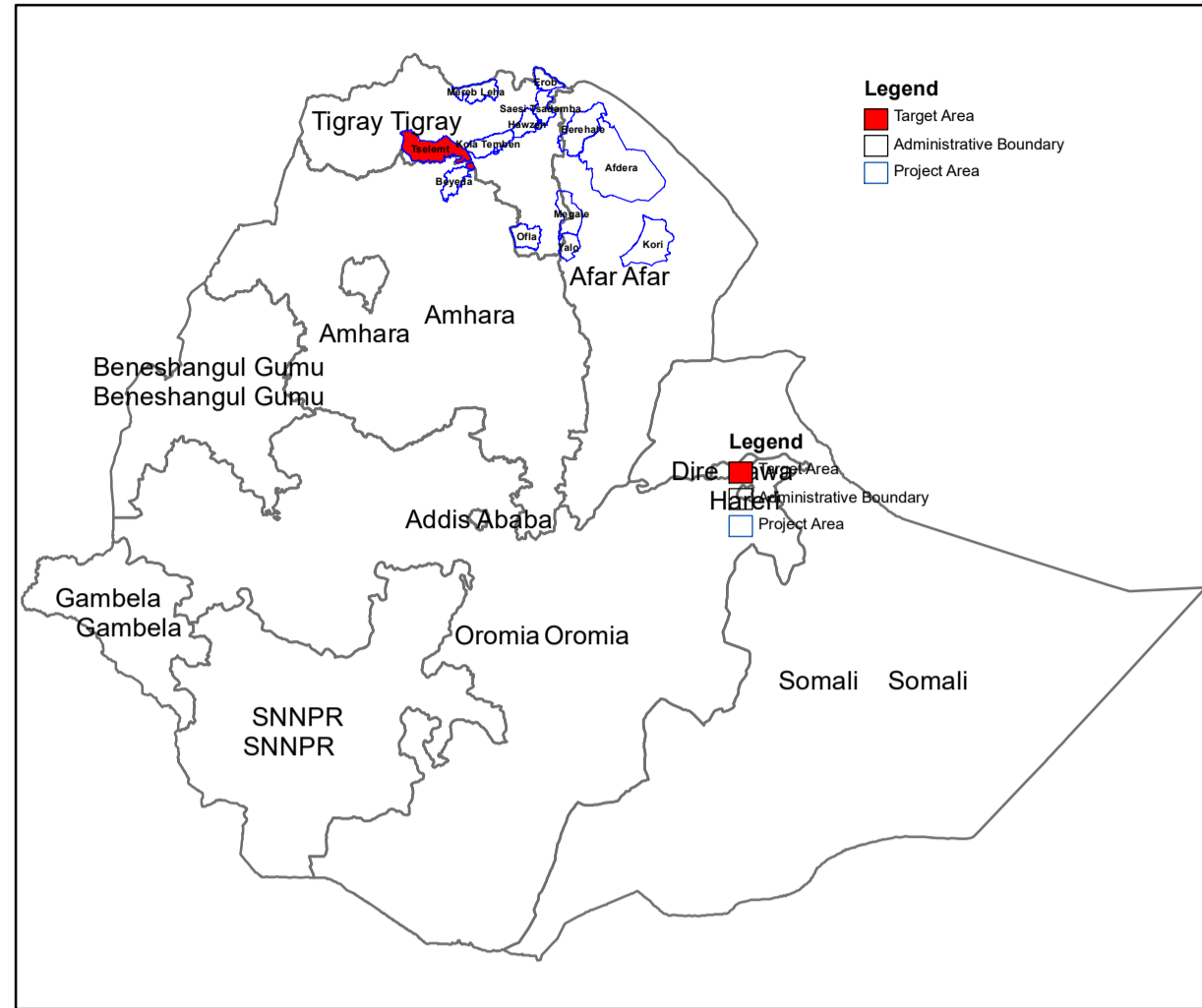
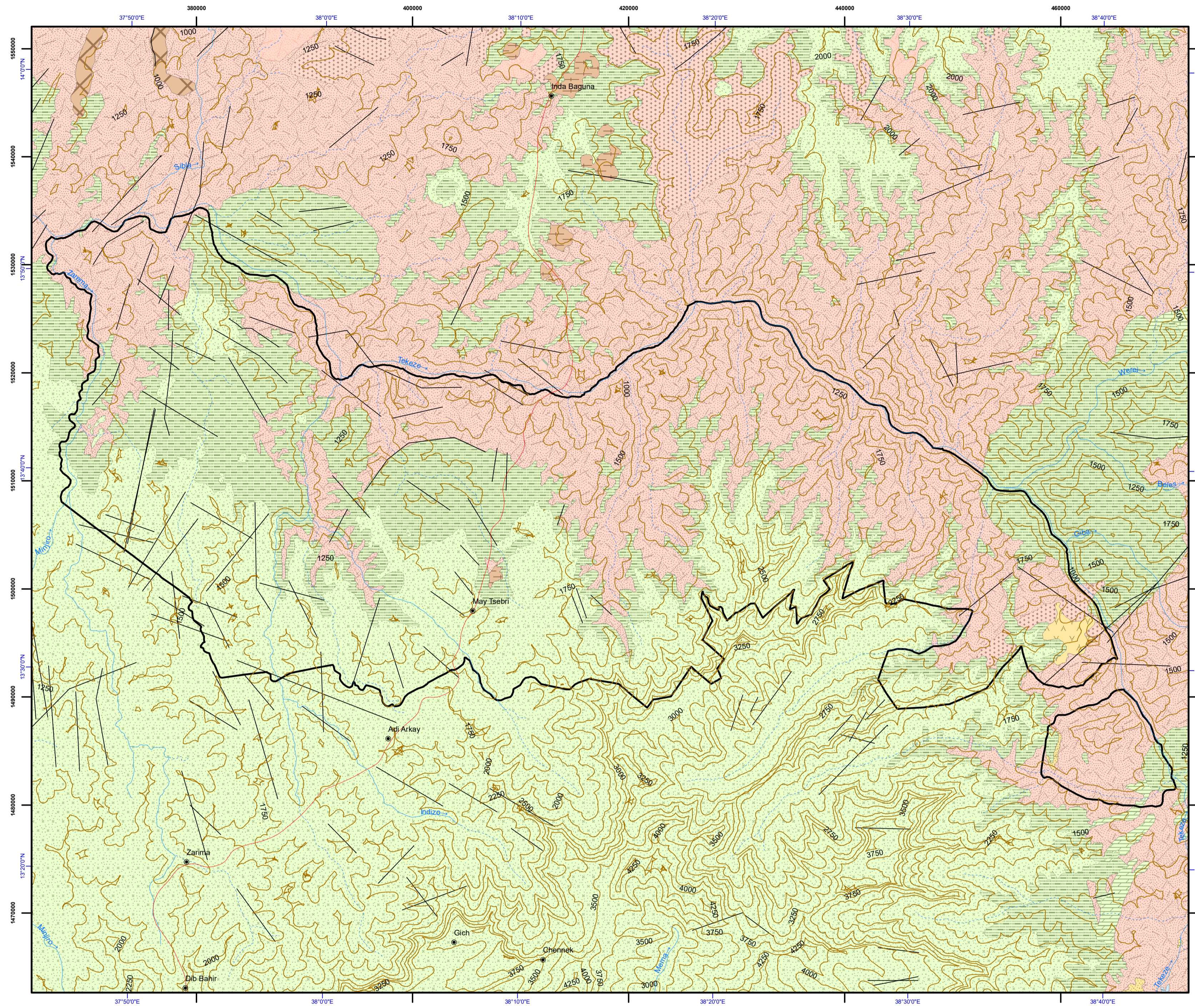
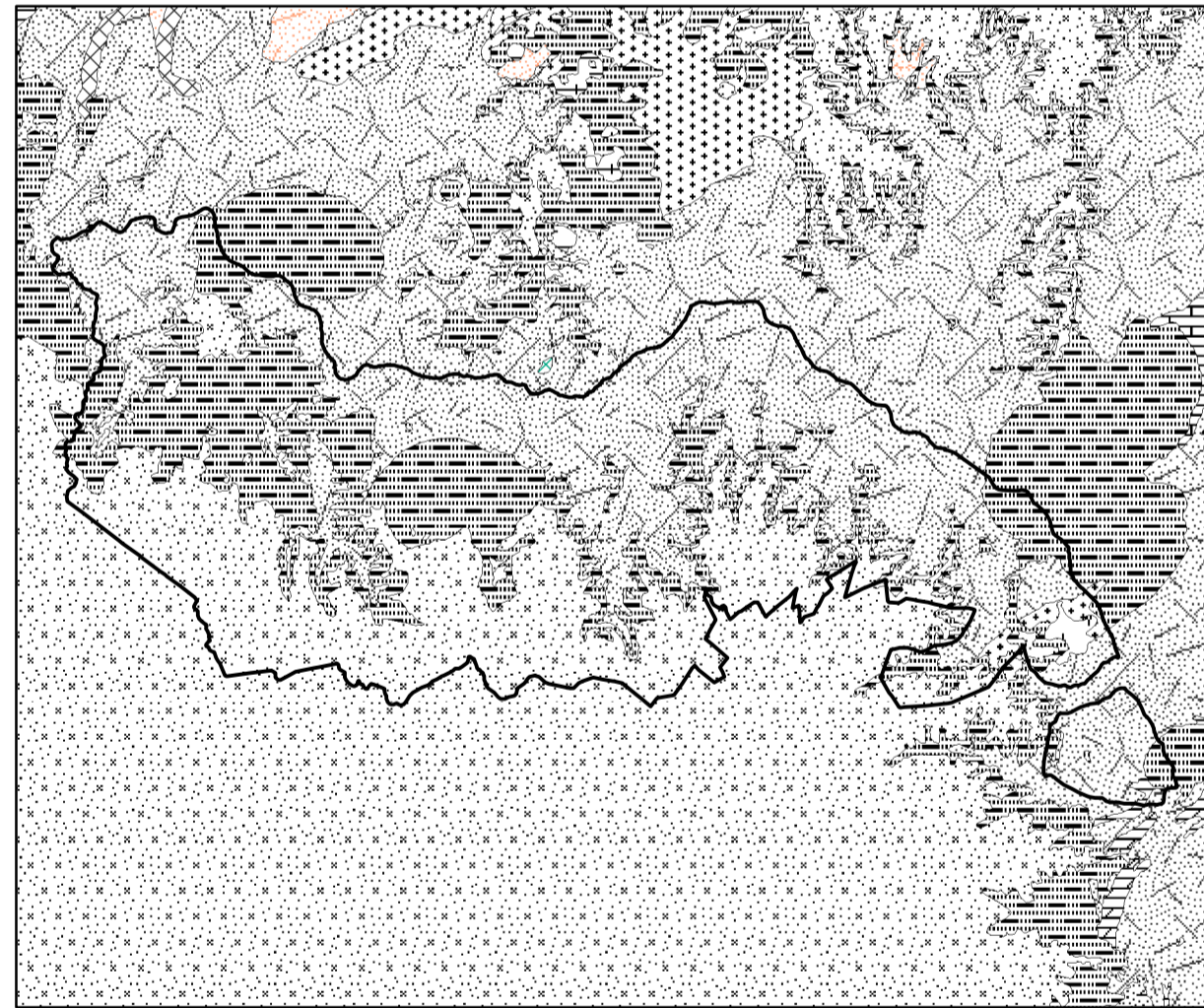


HYDROGEOLOGICAL MAP OF TSELEMET

PROJECT AREA



GEOLOGICAL MAP OF TSELEMET



- ### LEGEND
- #### Aquifer Classification
- Moderately productive fissured aquifers ($T = 1 - 10 \text{ m}^2/\text{d}$, $q = 0.01 - 1 \text{ l/s.m}$, $Q = 0.5 - 5 \text{ l/s}$ for wells and/or springs) or local or discontinuous but highly productive aquifers consisting of sedimentary and volcanic rocks
 - Low productive fissured aquifers ($T = 0.1 - 1 \text{ m}^2/\text{d}$, $q = 0.001 - 0.01 \text{ l/s.m}$, $Q = 0.05 - 0.5 \text{ l/s}$ for wells and/or springs) in which flow is mainly developed in irregular system of fissures & weathered mantle of a crystalline rock
 - Aquifers minor aquifers with local & limited groundwater resources consisting of sedimentary and volcanic rocks
- Perennial river
 - Intermittent river
 - Contour
 - Fault
 - Town
 - Road
 - Woreda Boundary

- #### Lithology
- Tuffe of Hamsho Units
 - Basalt with minor trachyte and upper pyroclastic
 - Trachyte and phonolite - Adwa Plugs
 - Granite / syenite
 - Sandstone - Adigrat, Amba Aradom, Enticho
 - Low grade metamorphic rocks - phyllite and slate - metavolcanics rocks - intermediate and basic lavas, tuffaceous slate, agglomerate, rhyolite and metasediments- black slate, limestone, sandstone, siltstone and greywacke

**Hydrogeological Mapping for
Climate Resilient Wash in Ethiopia - Lot 1**

Basins Development Authority
የተሰጠ ልማት ባለስልጣን

ACACIA WATER
Aquacon

Disclaimer:
 This document was produced with the financial assistance of The Department for International Development, UK. The boundaries in this map are not authoritative or political.
 Geology compiled by Geological Survey of Ethiopia from 1971 to 2015
 Hydrogeology compiled by: Jiri Sima, 2021
 Digital Cartography: Shiferaw Ayele Mammo, 2021

Horizontal Datum: WGS 1984
Vertical Datum: Mean sea level
Projection: Universal Transverse Mercator, Zone 37N