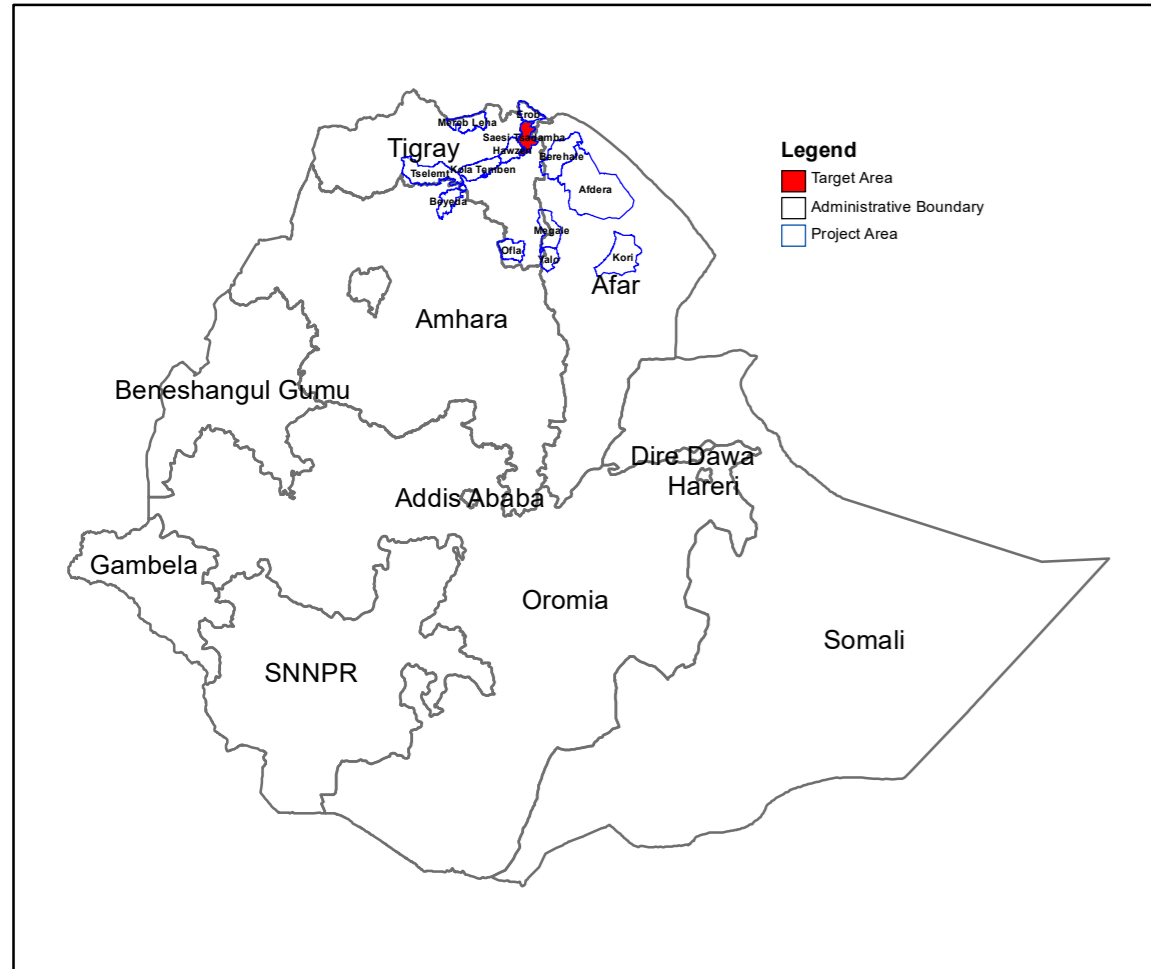
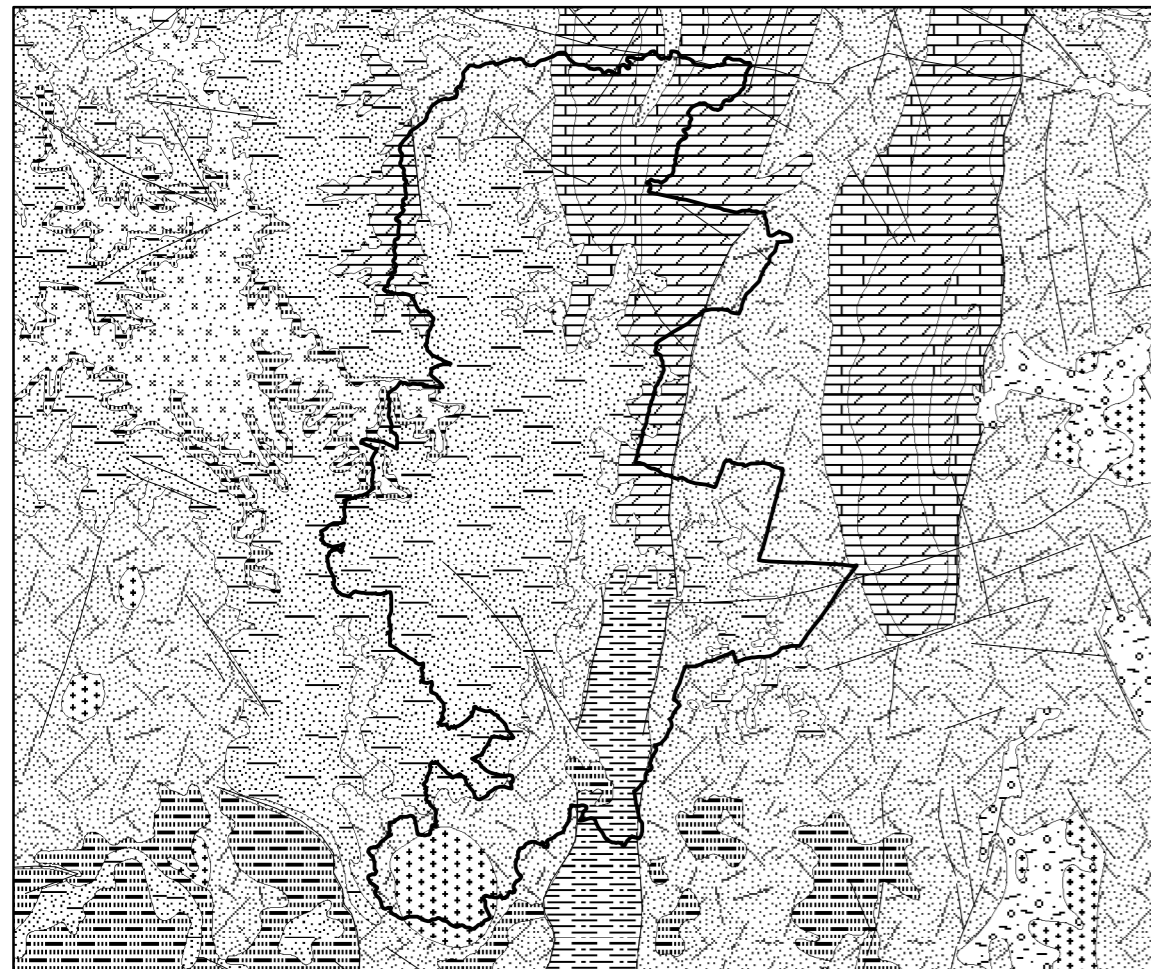


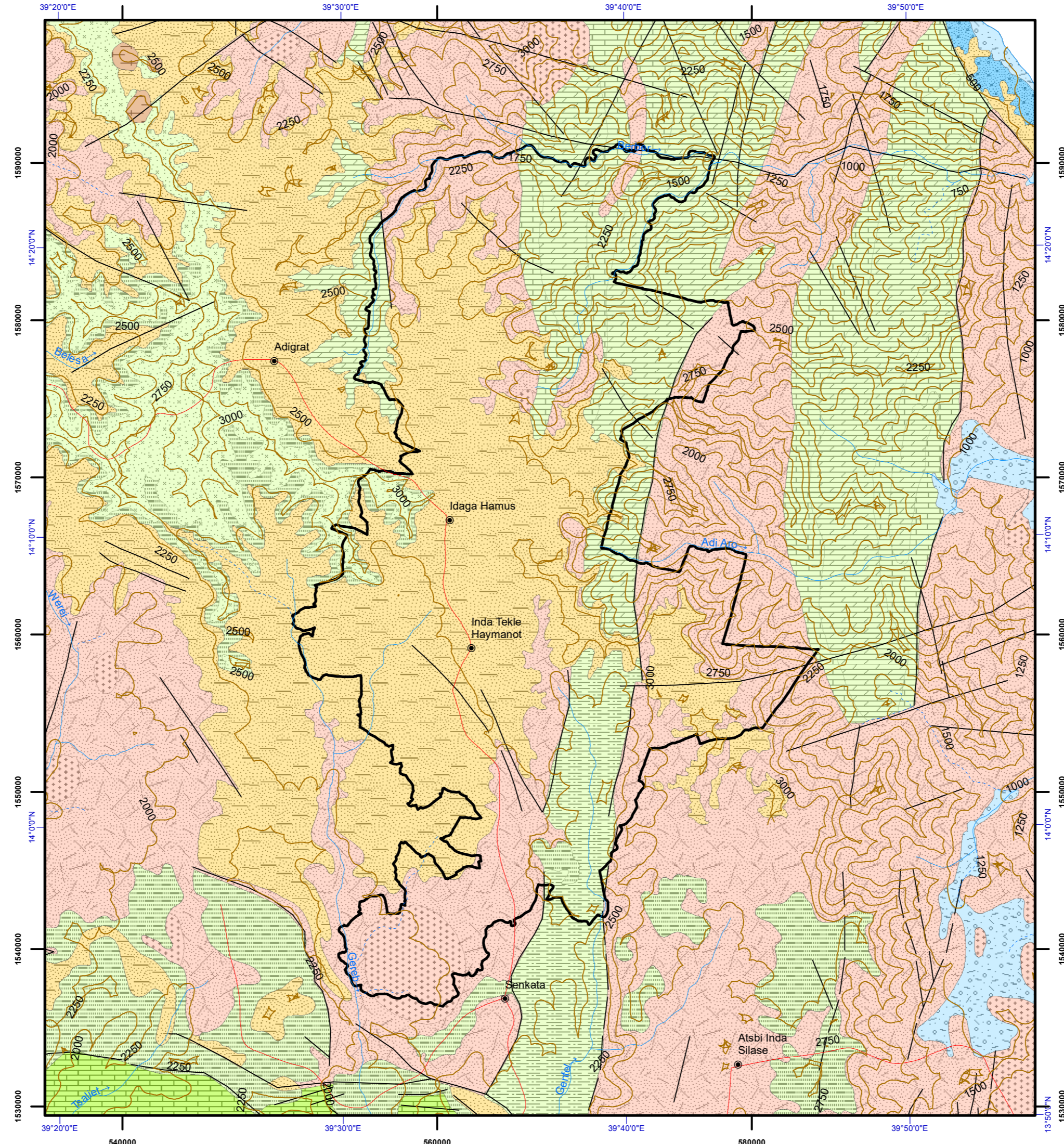
**PROJECT AREA**



**GEOLOGICAL MAP OF SAESI TSADAMBA**



**HYDROGEOLOGICAL MAP OF SAESI TSADAMBA**



**LEGEND**

- Aquifer Classification**
- Moderately productive fissured aquifers ( $T = 1 - 10 \text{ m}^2/\text{d}$ ,  $q = 0.01 - 1 \text{ l/s.m}$ ,  $Q = 0.5 - 5 \text{ l/s}$  for wells and/or springs) or local or discontinuous but highly productive aquifers consisting of sedimentary and volcanic rocks
  - Low productive fissured aquifers ( $T = 0.1 - 1 \text{ m}^2/\text{d}$ ,  $q = 0.001 - 0.01 \text{ l/s.m}$ ,  $Q = 0.05 - 0.5 \text{ l/s}$  for wells and/or springs) in which flow is mainly developed in irregular system of fissures & weathered mantle of a crystalline rock
  - Aquitards/minor aquifers with local & limited groundwater resources consisting of sedimentary and volcanic rocks
- Perennial river  
Intermittent river  
Contour  
Fault  
Town  
Road  
Woreda Boundary
- Lithology**
- Basalt with minor trachyte and upper pyroclastic
  - Granite / syenite
  - Limestone, undifferentiated slates, calcareous sediments, marble and fossiliferous and sand limestone
  - Dolomite interbedded with slate of Didikama Formation
  - Edaga Arbi Glacials/Tillite and Enticho sandstone
  - Low grade metamorphic rocks - phylite and slate- metavolcanics rocks - intermediate and basic lavas, tuffaceous slate, agglomerate, rhyolite and metasediments - black slate limestone, sandstone, siltstone and greywacke
  - Metamorphosed carbonates

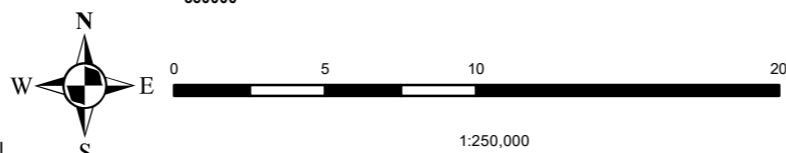
**Hydrogeological Mapping for Climate Resilient Wash in Ethiopia - Lot 1**

Basins Development Authority  
የተፋሰሶች ልማት ባለስልጣን

ACACIA WATER  
aquacon

**Disclaimer:**

This document was produced with the financial assistance of The Department for International Development, UK. The boundaries in this map are not authoritative or political. Geology compiled by Geological Survey of Ethiopia from 1971 to 2015. Hydrogeology compiled by: Jiri Sima, 2021. Digital Cartography: Shiferaw Ayele Mamo, 2021.



Horizontal Datum: WGS 1984  
Vertical Datum: Mean sea level  
Projection: Universal Transverse Mercator, Zone 37N