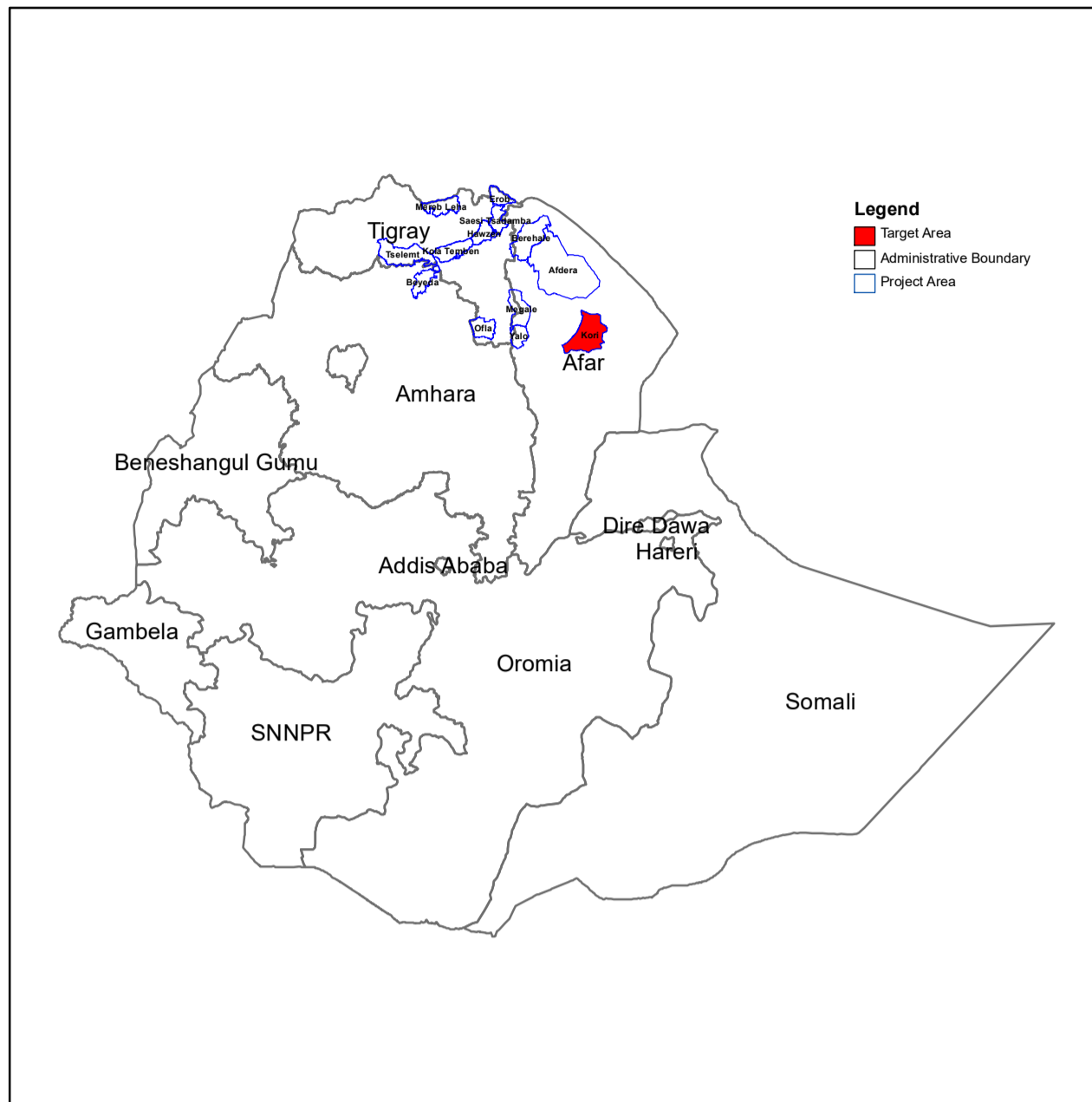
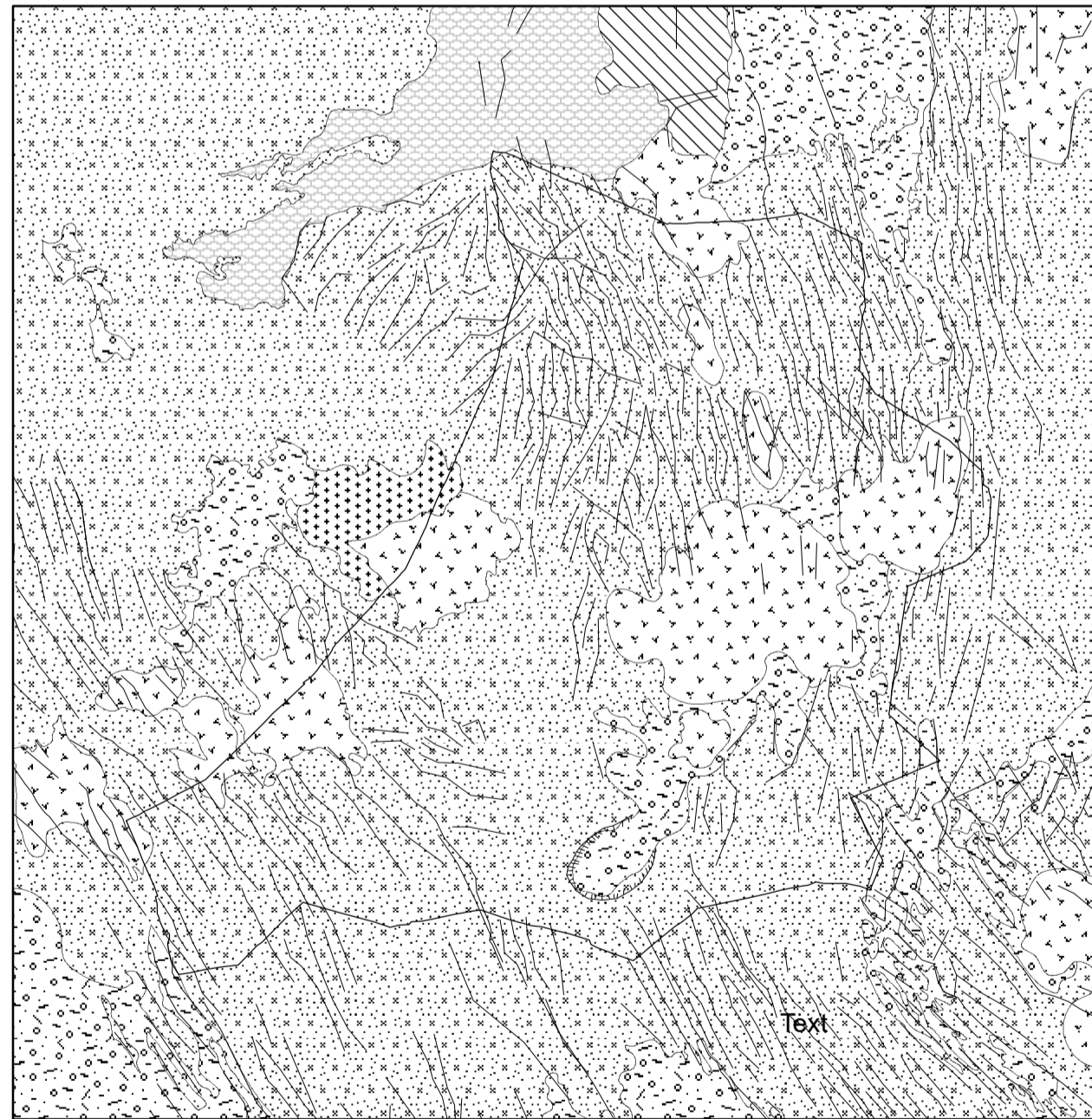


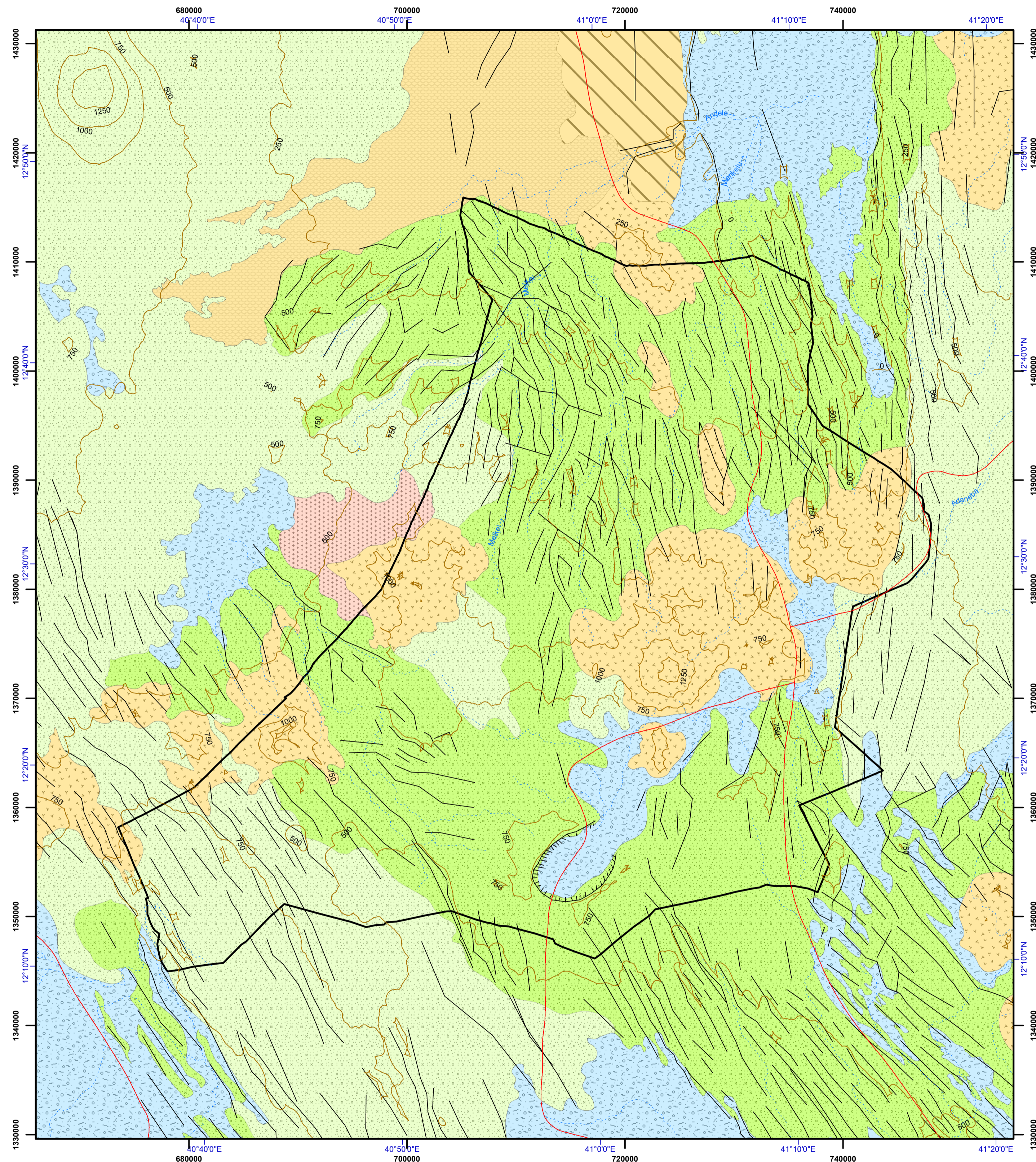
PROJECT AREA



GEOLOGICAL MAP OF KORI



HYDROGEOLOGICAL MAP OF KORI



LEGEND

Aquifer Classification

- Moderately productive porous aquifers ($T = 1 - 10 \text{ m}^2/\text{d}$, $q = 0.01 - 1 \text{ l/s.m}$, $Q = 0.5 - 5 \text{ l/s}$ for wells and/or springs) or local or discontinuous but highly productive aquifers
- Highly productive fissured / karst aquifers ($T = 10 - 100 \text{ m}^2/\text{d}$, $q = 1 - 10 \text{ l/s.m}$, $Q = 5 - 25 \text{ l/s}$ for wells and/or springs) or locally extremely productive aquifers consisting of sedimentary and volcanic rocks
- Moderately productive fissured aquifers ($T = 1 - 10 \text{ m}^2/\text{d}$, $q = 0.01 - 1 \text{ l/s.m}$, $Q = 0.5 - 5 \text{ l/s}$ for wells and/or springs) or local or discontinuous but highly productive aquifers consisting of sedimentary and volcanic rocks
- Low productive fissured aquifers ($T = 0.1 - 1 \text{ m}^2/\text{d}$, $q = 0.001 - 0.01 \text{ l/s.m}$, $Q = 0.05 - 0.5 \text{ l/s}$ for wells and/or springs) in which flow is mainly developed in irregular system of fissures & weathered mantle of a crystalline rock
- Aquifers minor aquifers with local & limited groundwater resources consisting of sedimentary and volcanic rocks

Lithology

- Alluvium
- Alluvial and lacustrine sediments – clay and sand with gravel, dunes and other aeolian deposits (in Afar)
- High fluvial terraces - gravel and low cemented sandstone
- Granite / syenite

Hydrogeological Mapping for Climate Resilient Wash in Ethiopia - Lot 1

Basins Development Authority
የተፋሰፍ ልማት ባለስልጣን

ACACIA WATER
aquacon

Disclaimer:
This document was produced with the financial assistance of The Department for International Development, UK. The boundaries in this map are not authoritative or political. Geology compiled by Geological Survey of Ethiopia from 1971 to 2015. Hydrogeology compiled by: Jiri Sima, 2021. Digital Cartography: Shiferaw Ayete Mamo, 2021.

Horizontal Datum: WGS 1984
Vertical Datum: Mean sea level
Projection: Universal Transverse Mercator, Zone 37N